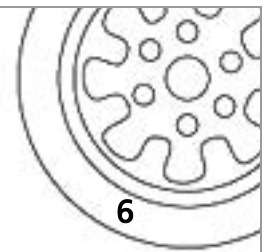


# SOUTH AUSTRALIA

CARS ANNUAL REPORT 2003/04



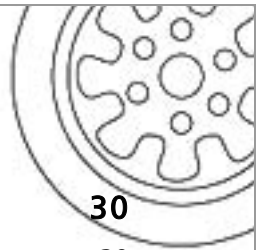


## TEMPORAL

Highlights		6
Table 5.1	South Australia - Thefts and recoveries by month reported stolen and recovered, July 2001 - June 2004	7
Figure 5.1	South Australia - Thefts and recoveries by month reported stolen and recovered, January 2000 - June 2004	8
Table 5.2	South Australia - Motorcycle thefts and recoveries by month reported stolen and recovered, July 2001 - June 2004	9
Table 5.3	South Australia - Theft rates per financial year, 1997/1998 - 2003/2004.	10
Table 5.4	South Australia - Thefts and recoveries by day of week, 2003/2004.	11
Table 5.5	South Australia - Thefts and recoveries by time of day, 2003/2004.	11
Figure 5.2	South Australia - Thefts and recoveries by time of day, 2003/2004.	12
Table 5.6	South Australia - Thefts and recoveries by day of week and time of day, 2003/2004.	13
Table 5.7	South Australia - Time elapsed between theft and reporting to police, 2003/2004.	13
Table 5.8	South Australia - Cumulative percentage of vehicles recovered by days elapsed since theft, 2003/2004.	14
Figure 5.3	South Australia - Cumulative percentage of vehicles recovered by days elapsed since theft, 2003/2004.	14
Table 5.9	South Australia - Number of multiple thefts of the same vehicle during 2003/2004.	15

## GEOGRAPHICAL

Highlights		16
Table 5.10	South Australia - Thefts and recoveries by location type of theft, 2003/2004.	17
Table 5.11	South Australia - Thefts and recoveries by Local Government Area of theft, 2003/2004.	18
Table 5.12	South Australia - Location of theft by postcode of owner, 2003/2004.	19
Table 5.13	South Australia - Location of recovery by Local Government Area (LGA) of theft, 2003/2004.	20
Figure 5.4	South Australia - Location of recovery by Local Government Area (LGA) of theft, 2003/2004.	20
Table 5.14	South Australia - Top hotspots, 2003/2004.	21
Figure 5.5	South Australia - Location of theft by selected postcodes around Adelaide, 2003/2004.	22
Figure 5.6	South Australia - Location of recovery by selected postcodes around Adelaide, 2003/2004.	23
Table 5.15	South Australia - Thefts and recoveries by postcode of theft, 2003/2004.	24
Table 5.16	South Australia- Top locations for recovery by postcode, 2003/2004.	29



## VEHICLE PROFILE

	<b>30</b>
Highlights	30
Table 5.17	32
Table 5.18	32
Table 5.19	32
Figure 5.7	33
Table 5.20	33
Table 5.21	34
Table 5.22	35
Figure 5.8	37
Table 5.23	38
Table 5.24	41
Table 5.25	47
Figure 5.9	48
Table 5.26	49
Table 5.26	50
Table 5.27	51
Table 5.28	54
Table 5.29	64
Table 5.30	64
Table 5.31	65
Table 5.32	66
Table 5.33	67
Table 5.34a	68

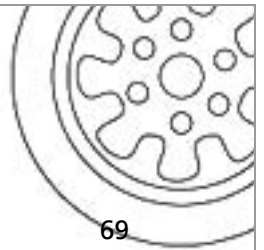
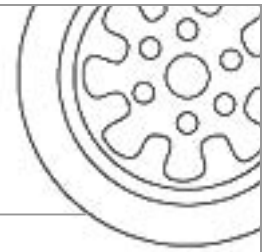


Table 5.34b	South Australia - Thefts and recoveries by estimated value of the vehicle, 2003/2004 - Passenger Vehicles.	69
Table 5.34c	South Australia - Thefts and recoveries by estimated value of the vehicle, 2003/2004 - Heavy/Other Vehicles.	70
Table 5.34d	South Australia - Thefts and recoveries by estimated value of the vehicle, 2003/2004 - All Vehicles.	71
<b>OFFENDERS</b>		<b>72</b>
Highlights		72
Table 5.35	South Australia - Number of apprehensions, unique individuals and counts relating to larceny or illegal use of a motor vehicle during 2003/2004.	73
Table 5.36	South Australia - Age and sex of alleged offenders apprehended during 2003/2004 (based on apprehensions).	73
Table 5.37	South Australia - Number of counts of larceny or illegal use of a motor vehicle per apprehension by gender, 2003/2004 (based on apprehensions).	74
Table 5.38	South Australia - Alleged offenders by country of birth and sex during 2003/2004 (based on apprehensions).	74
Table 5.39	South Australia - Age by ethnic appearance of alleged offenders 2003/2004 (based on apprehensions).	75
Table 5.40	South Australia - Number of counts of larceny or illegal use of a motor vehicle per apprehension by ethnic appearance, 2003/2004 (based on apprehensions).	75
Table 5.41	South Australia - Number of prior convictions for any offence at the time of apprehension by sex, 2003/2004.	76
Table 5.42	South Australia - Prior convictions for any offence by age at time of apprehension, 2003/2004.	76
Table 5.43	South Australia - Prior convictions for any offence by age at time of apprehension, 2003/2004.	77
Table 5.44	South Australia - Prior detention or imprisonment for any offence by age at time of apprehension, 2003/2004.	77
Table 5.45	South Australia - Time since last conviction for any offence and current apprehension for larceny or illegal use of a motor vehicle by age at time of apprehension, 2003/2004.	78
Table 5.46	South Australia - Number of prior convictions for larceny/illegal use of a motor vehicle, at the time of apprehension by sex, 2003/2004.	78
Table 5.47	South Australia - Number of prior convictions for larceny/illegal use of a motor vehicle by age at the time of apprehension, 2003/2004 (number).	79
Table 5.48	South Australia - Per cent of prior convictions for larceny/illegal use of a motor vehicle by age at the time of apprehension, 2003/2004 (per cent).	79
Table 5.49	South Australia - Prior detention or imprisonment for larceny/illegal use of a motor vehicle by age, 2003/2004.	80

Table 5.50	South Australia - Time since last conviction for larceny/illegal use of a motor vehicle and current apprehension for larceny or illegal use of a motor vehicle by age at time of apprehension, 2003/2004.	80
Table 5.51	South Australia - Age and sex of alleged offenders apprehended during 2003/2004 (based on individuals).	81
Table 5.52	South Australia - Total number of counts of larceny or illegal use of a motor vehicle per individual by gender, 2003/2004.	81
Table 5.53	South Australia - Number of apprehensions for larceny or illegal use of a motor vehicle per individual by gender, 2003/2004.	82
Table 5.54	South Australia - Age by ethnic appearance of alleged offenders, 2003/2004 (based on unique individuals).	82
Table 5.55	South Australia - Total number of counts of larceny or illegal use of a motor vehicle per individual by ethnic appearance, 2003/2004.	83
Table 5.56	South Australia - Number of apprehensions for larceny or illegal use of a motor vehicle per individual by ethnic appearance, 2003/2004.	83
Table 5.57	South Australia - Magistrates Court - Outcome of cases involving larceny/illegal use of a motor vehicle as the major charge, 2003.	83
Table 5.58	South Australia - Magistrates Court - Major penalty for cases where the major charge convicted was larceny/illegal use of a motor vehicle, 2003.	84
Table 5.59	South Australia - Supreme Court - Outcomes of cases involving larceny/illegal use of a motor vehicle as the major charge, 2003.	84
Table 5.60	South Australia - Supreme and District Court - Major penalty of cases involving larceny/illegal use of a motor vehicle as the major charge, 2003.	85
Table 5.61	Juvenile Offenders - Actions by Police: number of actions by major offence charged and sex, 2003.	85
Table 5.62	Juvenile Offenders - Actions by Police: age and sex of offender by major offence alleged, 2003.	85
Table 5.63	Juvenile Offenders - Actions by Police: race and major offence alleged, 2003.	86
Table 5.64	Juvenile Offenders - Actions by Police: type of action by major offence alleged, 2003.	86
Table 5.65	Juvenile Offenders - Actions by Police: race and type of action by major offence alleged, 2003.	86
Table 5.66	Juvenile Offenders - Youth Court: cases finalised by major offence charged and sex, 2003.	87
Table 5.67	Juvenile Offenders - Youth Court: appearances where major offence proved by major penalty imposed for major charge, 2003.	87
Table 5.68	Juvenile Offenders - Family conferences by major offence alleged and sex, 2003.	87
Table 5.69	Juvenile Offenders - Family Conferences: age and sex of defendant by major offence alleged, 2003.	88
Table 5.70	Juvenile Offenders - Family Conferences: age by race of defendant, 2003 (larceny and illegal use of a motor vehicle combined).	88

# highlights



## *Temporal*

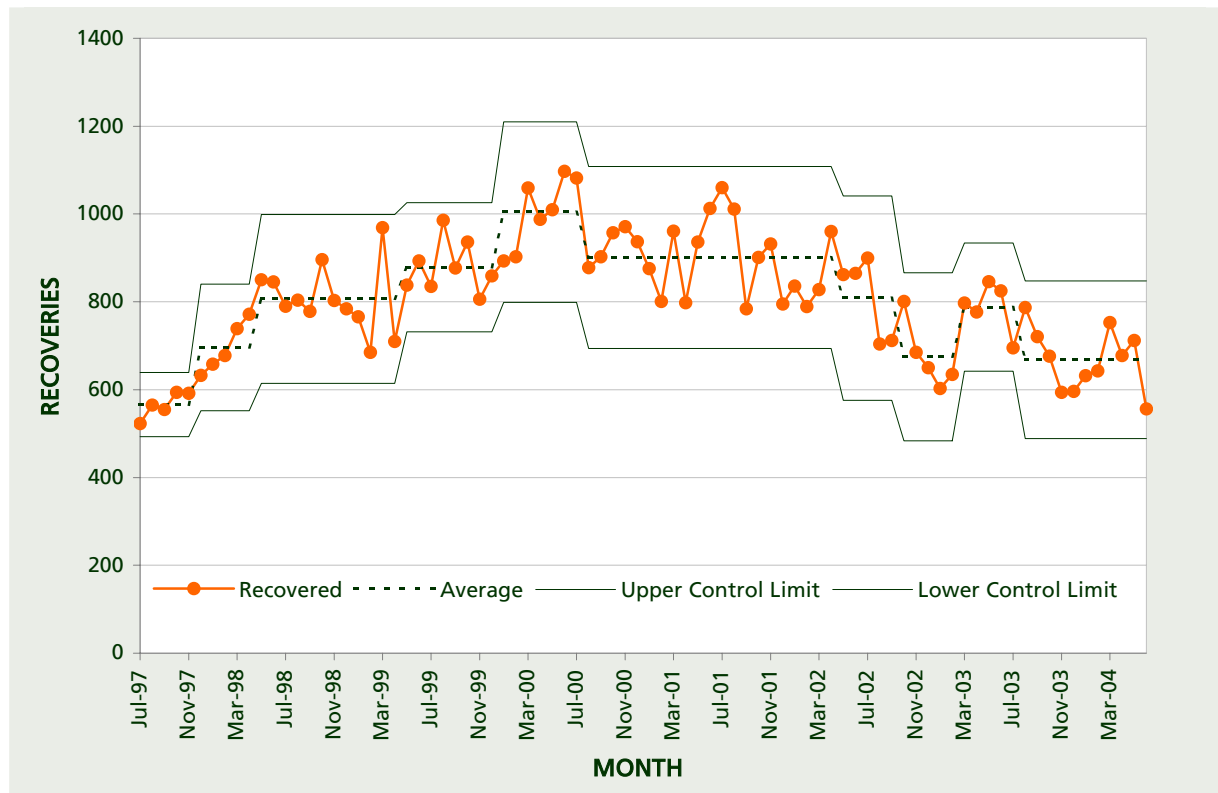
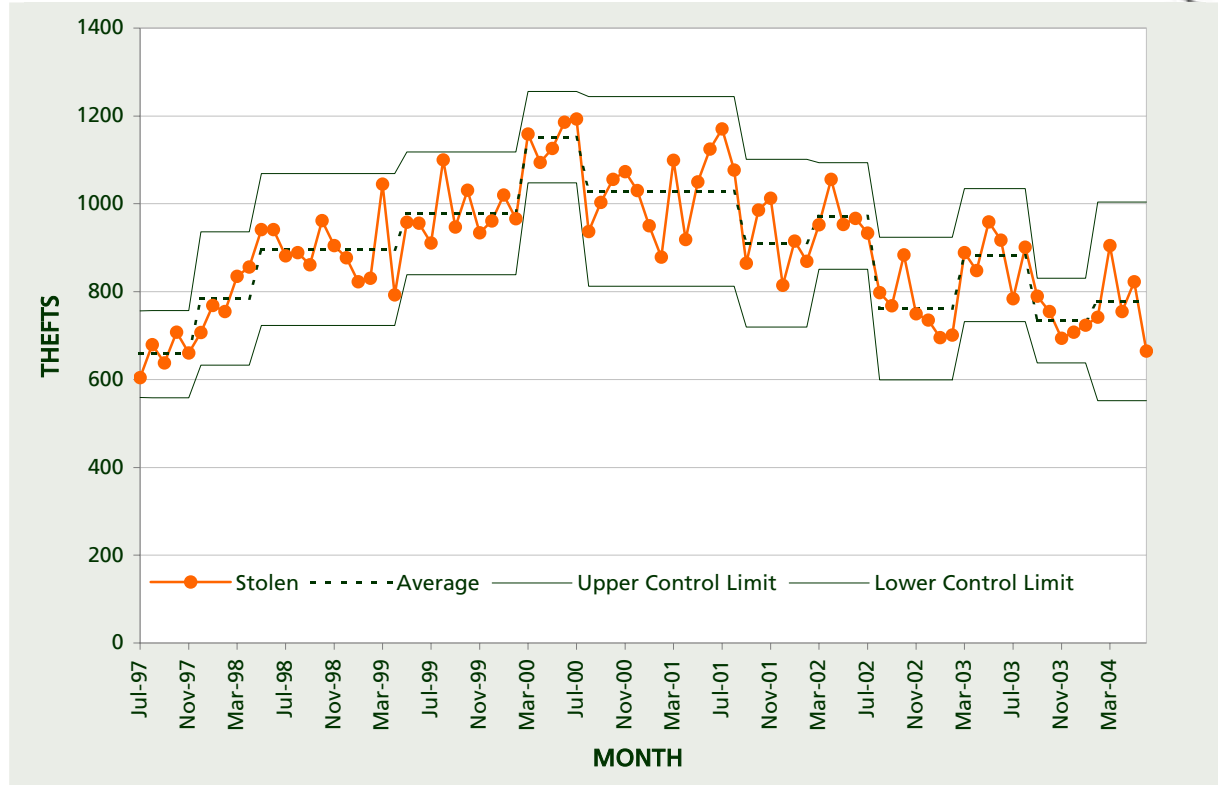
- Vehicle theft numbers have fallen for the fourth consecutive year in South Australia with a total of 9,246 thefts recorded during the 2003/04 financial year. This represents a **6.4% decrease** over the previous figure of 9,877 thefts recorded in 2002/03. The control chart shows a current theft trend level of 778 thefts per month, recorded since February 2004.
- The recovery rate dropped slightly with **85.0% of vehicles recovered** by the end of the financial year.
- South Australia's **yearly theft rate** equates to 8.23 thefts per 1,000 registered vehicles or 6.04 thefts per 1,000 population compared to the national averages of 6.38 and 4.40 respectively.
- Nearly half (46.8%) of the vehicles were stolen between **6pm and midnight** with Friday and Saturday evenings remaining the most popular time periods for theft.
- Approximately half of vehicles stolen and recovered during the year were found **within 24 hours** of theft (48.8%) with 92.2% of recoveries occurring within a fortnight.
- Of the vehicles stolen in South Australia during the year, **93.2% were stolen once**, 3.8% (340 vehicles) were stolen twice, 21 vehicles were stolen three times and one vehicle was stolen four times.

**Table 5.1 South Australia - Thefts and recoveries by month reported stolen and recovered, July 2001 - June 2004**

Month Stolen	Number of thefts	% of thefts	Number of thefts recovered	% of recoveries	% of thefts recovered in the year	No. recovered that were stolen previously**
July 2001	1,171	10.1	1,047	10.1	89.4	117
August 2001	1,077	9.3	987	9.5	91.6	38
September 2001	865	7.4	778	7.5	89.9	11
October 2001	986	8.5	893	8.6	90.6	22
November 2001	1,013	8.7	934	9.0	92.2	20
December 2001	815	7.0	754	7.3	92.5	15
January 2002	915	7.9	826	8.0	90.3	12
February 2002	869	7.5	782	7.6	90.0	13
March 2002	952	8.2	842	8.1	88.4	4
April 2002	1,056	9.1	937	9.0	88.7	4
May 2002	953	8.2	818	7.9	85.8	3
June 2002	967	8.3	758	7.3	78.4	7
<b>Total 2001/2002</b>	<b>11,639</b>	<b>100.0</b>	<b>10,356</b>	<b>100.0</b>	<b>89.0</b>	<b>266</b>
July 2002	933	9.4	852	9.8	91.3	119
August 2002	798	8.1	703	8.1	88.1	26
September 2002	768	7.8	696	8.0	90.6	14
October 2002	884	9.0	802	9.2	90.7	13
November 2002	750	7.6	667	7.7	88.9	9
December 2002	735	7.4	648	7.4	88.2	10
January 2003	695	7.0	608	7.0	87.5	12
February 2003	701	7.1	627	7.2	89.4	11
March 2003	889	9.0	781	9.0	87.9	8
April 2003	848	8.6	747	8.6	88.1	3
May 2003	959	9.7	830	9.5	86.5	3
June 2003	917	9.3	742	8.5	80.9	1
<b>Total 2002/2003</b>	<b>9,877</b>	<b>100.0</b>	<b>8,703</b>	<b>100.0</b>	<b>88.1</b>	<b>229</b>
July 2003	784	8.5	679	8.6	86.6	88
August 2003	901	9.7	788	10.0	87.5	20
September 2003	790	8.5	698	8.9	88.4	20
October 2003	755	8.2	659	8.4	87.3	5
November 2003	694	7.5	596	7.6	85.9	9
December 2003	708	7.7	622	7.9	87.9	5
January 2004	724	7.8	611	7.8	84.4	11
February 2004	742	8.0	646	8.2	87.1	6
March 2004	905	9.8	750	9.5	82.9	8
April 2004	755	8.2	640	8.1	84.8	4
May 2004	823	8.9	674	8.6	81.9	1
June 2004	665	7.2	499	6.3	75.0	3
<b>Total 2003/2004</b>	<b>9,246</b>	<b>100.0</b>	<b>7,862</b>	<b>100.0</b>	<b>85.0</b>	<b>180</b>

"Recovered" is based on the number of thefts that were recorded stolen during the reporting period and recovered by the end of the reporting period. \* based on the date the theft was reported to police \*\* "Number recovered that were stolen previously" refers to vehicles recovered within the financial year that were stolen in a previous financial year.

**Figure 5.1 South Australia - Thefts and recoveries by month reported stolen and recovered, January 2000 - June 2004**



'Recovered' is based on the number of thefts that were recovered in a given month regardless of when they were stolen. Figures reported in this graph will therefore not match those reported elsewhere in this document.



**Table 5.2 South Australia - Motorcycle thefts and recoveries by month reported stolen and recovered, July 2001 - June 2004**

Month Stolen	Number of thefts	% of thefts	Number of thefts recovered	% of recoveries	% of thefts recovered in the year	No. recovered that were stolen previously**
July 2001	39	9.1	13	9.4	33.3	4
August 2001	33	7.7	10	7.2	30.3	2
September 2001	40	9.3	12	8.7	30.0	1
October 2001	34	7.9	14	10.1	41.2	0
November 2001	28	6.5	14	10.1	50.0	1
December 2001	21	4.9	10	7.2	47.6	0
January 2002	29	6.7	8	5.8	27.6	1
February 2002	34	7.9	13	9.4	38.2	2
March 2002	42	9.8	19	13.8	45.2	0
April 2002	50	11.6	10	7.2	20.0	1
May 2002	36	8.4	8	5.8	22.2	1
June 2002	44	10.2	7	5.1	15.9	1
<b>Total 2001/2002</b>	<b>430</b>	<b>100.0</b>	<b>138</b>	<b>100.0</b>	<b>32.1</b>	<b>14</b>
July 2002	27	7.4	7	5.7	25.9	9
August 2002	34	9.3	11	9.0	32.4	0
September 2002	19	5.2	4	3.3	21.1	0
October 2002	41	11.2	20	16.4	48.8	1
November 2002	22	6.0	6	4.9	27.3	2
December 2002	27	7.4	13	10.7	48.1	1
January 2003	29	7.9	12	9.8	41.4	3
February 2003	19	5.2	7	5.7	36.8	0
March 2003	30	8.2	8	6.6	26.7	2
April 2003	28	7.6	10	8.2	35.7	0
May 2003	50	13.6	12	9.8	24.0	0
June 2003	41	11.2	12	9.8	29.3	0
<b>Total 2002/2003</b>	<b>367</b>	<b>100.0</b>	<b>122</b>	<b>100.0</b>	<b>33.2</b>	<b>18</b>
July 2003	39	9.9	15	14.2	38.5	1
August 2003	40	10.2	8	7.5	20.0	0
September 2003	26	6.6	9	8.5	34.6	2
October 2003	25	6.4	5	4.7	20.0	1
November 2003	29	7.4	8	7.5	27.6	1
December 2003	30	7.6	10	9.4	33.3	2
January 2004	31	7.9	8	7.5	25.8	0
February 2004	33	8.4	13	12.3	39.4	0
March 2004	48	12.2	9	8.5	18.8	2
April 2004	35	8.9	8	7.5	22.9	1
May 2004	31	7.9	10	9.4	32.3	0
June 2004	26	6.6	3	2.8	11.5	1
<b>Total 2003/2004</b>	<b>393</b>	<b>100.0</b>	<b>106</b>	<b>100.0</b>	<b>27.0</b>	<b>11</b>

"Recovered" is based on the number of thefts that were recorded stolen during the reporting period and recovered by the end of the reporting period. \* based on the date the theft was reported to police \*\* Number recovered that were stolen previously" refers to vehicles recovered within the financial year that were stolen in a previous financial year.

**Table 5.3 South Australia - Theft rates per financial year, 1997/1998 - 2003/2004.**

Financial Year of Theft	Number	Theft rate per 1,000 registrations	Theft rate per 1,000 population
<b>Thefts</b>			
July 1997 - June 1998	9,093	9.07	6.12
July 1998 - June 1999	10,782	10.46	7.22
July 1999 - June 2000	12,435	12.04	8.28
July 2000 - June 2001	12,314	11.46	8.17
July 2001 - June 2002	11,639	10.71	7.68
July 2002 - June 2003	9,877	8.88	6.49
July 2003 - June 2004	9,246	8.23	6.04
<b>Recoveries</b>			
July 1997 - June 1998	7,917	7.90	5.33
July 1998 - June 1999	9,556	9.27	6.40
July 1999 - June 2000	11,071	10.72	7.37
July 2000 - June 2001	10,875	10.12	7.21
July 2001 - June 2002	10,356	9.53	6.83
July 2002 - June 2003	8,703	7.83	5.72
July 2003 - June 2004	7,862	7.00	5.13

Registration figures for 1997/98 to 1999/00 are based on the ABS Motor Vehicle Census taken as at 31st October each year (Catalogue No.9309.0). Registration figures from 2000/01 onwards are from state registration database extracts as at 31st December each year. Population figures have been obtained from the ABS publication Australian Demographic Statistics, Catalogue No. 3101.0 as at 31st December each year.

**Table 5.4 South Australia - Thefts and recoveries by day of week, 2003/2004.**

Day Stolen	Number of thefts	% of thefts	Number of thefts recovered	% of recoveries	% of thefts recovered in the year
Sunday	1,286	13.9	1,108	14.1	86.2
Monday	1,185	12.8	1,002	12.7	84.6
Tuesday	1,187	12.8	1,016	12.9	85.6
Wednesday	1,192	12.9	1,014	12.9	85.1
Thursday	1,326	14.3	1,113	14.2	83.9
Friday	1,449	15.7	1,222	15.5	84.3
Saturday	1,621	17.5	1,387	17.6	85.6
<b>Total</b>	<b>9,246</b>	<b>100.0</b>	<b>7,862</b>	<b>100.0</b>	<b>85.0</b>

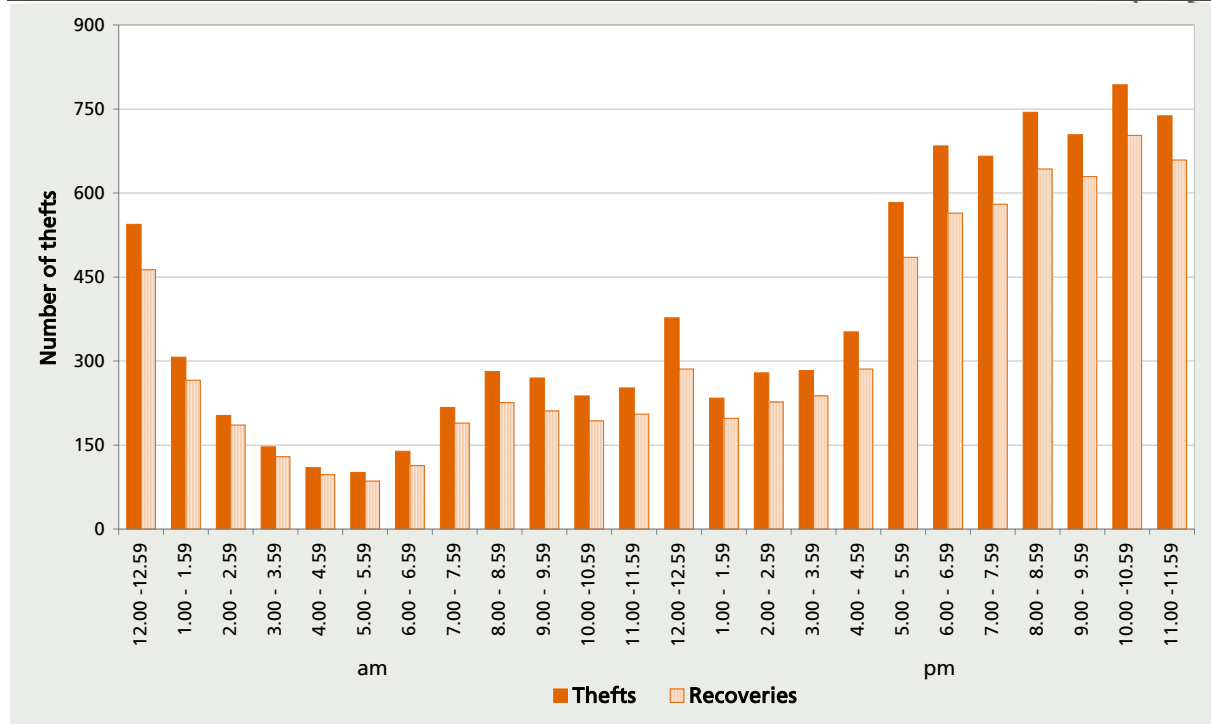
"Recovered" is based on the number of thefts that were recorded stolen during the reporting period and recovered by the end of the reporting period.

**Table 5.5 South Australia - Thefts and recoveries by time of day, 2003/2004.**

Time (earliest possible)	Number of thefts	% of thefts	Number of thefts recovered	% of recoveries	% of thefts recovered in the year
12.00 - 12.59 am	544	5.9	463	5.9	85.1
1.00 - 1.59 am	307	3.3	266	3.4	86.6
2.00 - 2.59 am	203	2.2	186	2.4	91.6
3.00 - 3.59 am	147	1.6	129	1.6	87.8
4.00 - 4.59 am	110	1.2	97	1.2	88.2
5.00 - 5.59 am	101	1.1	86	1.1	85.1
6.00 - 6.59 am	139	1.5	113	1.4	81.3
7.00 - 7.59am	217	2.3	189	2.4	87.1
8.00 - 8.59 am	281	3.0	226	2.9	80.4
9.00 - 9.59 am	270	2.9	211	2.7	78.1
10.00 - 10.59 am	238	2.6	193	2.5	81.1
11.00 - 11.59 am	252	2.7	205	2.6	81.3
12.00 - 12.59 pm	377	4.1	286	3.6	75.9
1.00 - 1.59 pm	234	2.5	198	2.5	84.6
2.00 - 2.59 pm	279	3.0	227	2.9	81.4
3.00 - 3.59 pm	283	3.1	238	3.0	84.1
4.00 - 4.59 pm	352	3.8	286	3.6	81.2
5.00 - 5.59 pm	583	6.3	485	6.2	83.2
6.00 - 6.59 pm	684	7.4	564	7.2	82.5
7.00 - 7.59 pm	666	7.2	580	7.4	87.1
8.00 - 8.59 pm	744	8.0	643	8.2	86.4
9.00 - 9.59 pm	704	7.6	629	8.0	89.3
10.00 - 10.59 pm	793	8.6	703	8.9	88.7
11.00 - 11.59 pm	738	8.0	659	8.4	89.3
<b>Total</b>	<b>9,246</b>	<b>100.0</b>	<b>7,862</b>	<b>100.0</b>	<b>85.0</b>

"Recovered" is based on the number of thefts that were recorded stolen during the reporting period and recovered by the end of the reporting period.

**Figure 5.2 South Australia - Thefts and recoveries by time of day, 2003/2004.**



**Table 5.6 South Australia - Thefts and recoveries by day of week and time of day, 2003/2004.**

	Sunday	Monday	Tuesday	Wednesday	Thursday	Friday	Saturday
<b>Number of thefts</b>							
12.00 am - 3.59 am	261	145	114	133	137	153	258
4.00 am - 7.59 am	69	84	85	73	76	83	97
8.00 am - 11.59 am	107	153	165	157	164	153	142
12.00 pm - 3.59 pm	170	142	165	167	143	161	225
4.00 pm - 7.59 pm	287	286	311	290	352	381	378
8.00 pm - 11.59 pm	392	375	347	372	454	518	521
<b>Total</b>	<b>1,286</b>	<b>1,185</b>	<b>1,187</b>	<b>1,192</b>	<b>1,326</b>	<b>1,449</b>	<b>1,621</b>
Percentage	13.9	12.8	12.8	12.9	14.3	15.7	17.5
<b>Number of recoveries</b>							
12.00 am - 3.59 am	232	119	99	119	113	133	229
4.00 am - 7.59 am	60	70	73	66	62	71	83
8.00 am - 11.59 am	85	123	133	125	132	123	114
12.00 pm - 3.59 pm	139	109	143	139	113	126	180
4.00 pm - 7.59 pm	250	241	259	242	282	323	318
8.00 pm - 11.59 pm	342	340	309	323	411	446	463
<b>Total</b>	<b>1,108</b>	<b>1,002</b>	<b>1,016</b>	<b>1,014</b>	<b>1,113</b>	<b>1,222</b>	<b>1,387</b>
Percentage	14.1	12.7	12.9	12.9	14.2	15.5	17.6
<b>% Recovered</b>							
12.00 am - 3.59 am	88.9	82.1	86.8	89.5	82.5	86.9	88.8
4.00 am - 7.59 am	87.0	83.3	85.9	90.4	81.6	85.5	85.6
8.00 am - 11.59 am	79.4	80.4	80.6	79.6	80.5	80.4	80.3
12.00 pm - 3.59 pm	81.8	76.8	86.7	83.2	79.0	78.3	80.0
4.00 pm - 7.59 pm	87.1	84.3	83.3	83.4	80.1	84.8	84.1
8.00 pm - 11.59 pm	87.2	90.7	89.0	86.8	90.5	86.1	88.9
<b>Total</b>	<b>86.2</b>	<b>84.6</b>	<b>85.6</b>	<b>85.1</b>	<b>83.9</b>	<b>84.3</b>	<b>85.6</b>

"Recovered" is based on the number of thefts that were recorded stolen during the reporting period and recovered by the end of the reporting period.

**Table 5.7 South Australia - Time elapsed between theft and reporting to police, 2003/2004.**

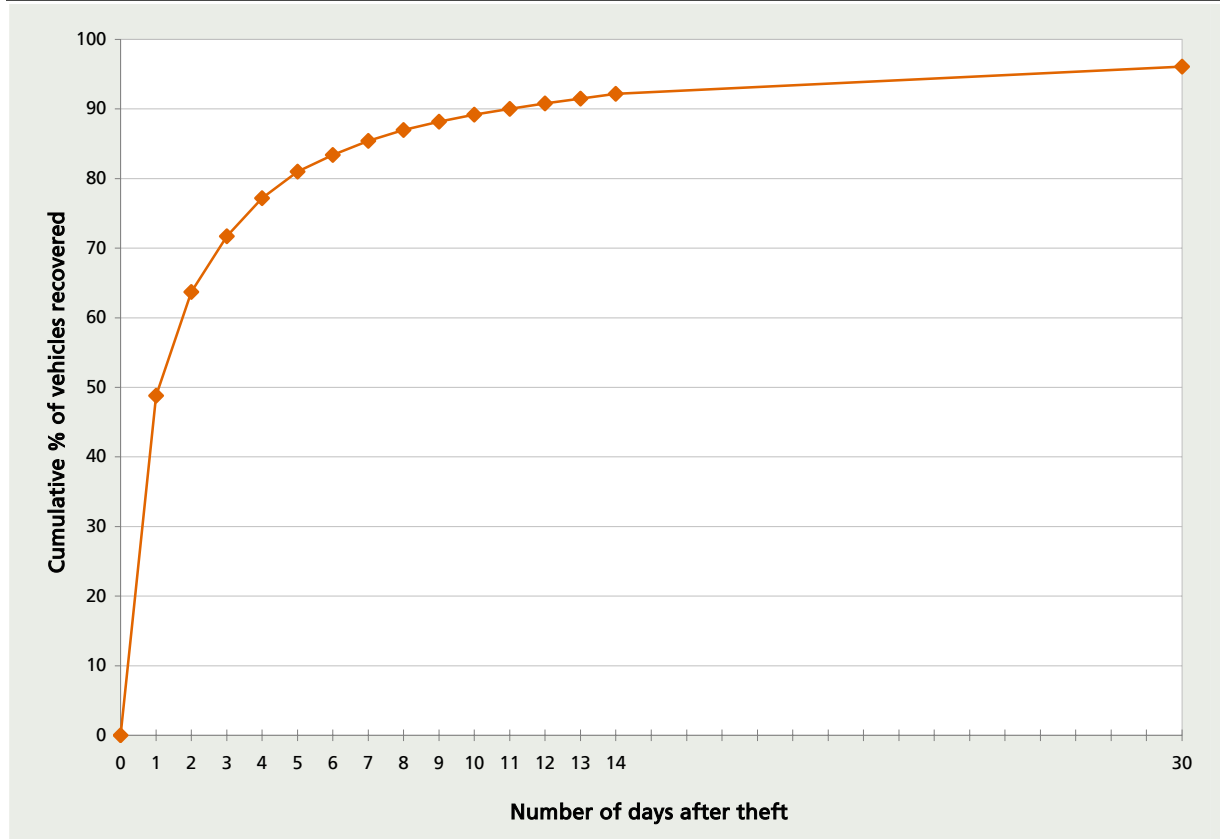
Time elapsed between theft and reporting to police*	Number	%
0 - 12 hours	6,653	72.0
12.01 - 23.59 hours	1,482	16.0
<b>Subtotal - Less than 24 hours</b>	<b>8,135</b>	<b>88.0</b>
1 - 2 days	406	4.4
2 - 3 days	175	1.9
3 - 4 days	78	0.8
4 - 5 days	57	0.6
5 - 6 days	35	0.4
6 - 7 days	25	0.3
<b>Subtotal - 1 - 7 days</b>	<b>776</b>	<b>8.4</b>
7 - 14 days	32	0.3
14 days or more	303	3.3
<b>Subtotal - 7 or more days</b>	<b>335</b>	<b>3.6</b>
Unknown	0	0.0
<b>Total</b>	<b>9,246</b>	<b>100.0</b>

\* Based on earliest possible time of theft.

**Table 5.8 South Australia - Cumulative percentage of vehicles recovered by days elapsed since theft, 2003/2004.**

Time interval between theft and recovery	Number of stolen vehicles recovered	Cumulative Percent
1 day	3,839	48.8
2 days	1,171	63.7
3 days	626	71.7
4 days	436	77.2
5 days	293	81.0
6 days	190	83.4
7 days	160	85.4
8 days	126	87.0
9 days	91	88.2
10 days	83	89.2
11 days	61	90.0
12 days	65	90.8
13 days	49	91.5
14 days	55	92.2
30 days	313	96.1
60 days	148	98.0
90 days	59	98.8
120 days	32	99.2
150 days	15	99.4
180 days	6	99.4
364 days	12	99.6
365 days or more	32	100.0

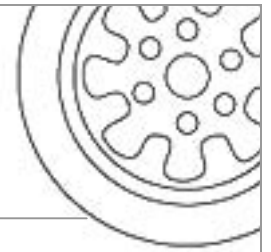
**Figure 5.3 South Australia - Cumulative percentage of vehicles recovered by days elapsed since theft, 2003/2004.**



**Table 5.9 South Australia - Number of multiple thefts of the same vehicle during 2003/2004.**

Number of thefts per vehicle	Number of vehicles	% of vehicles
Once	8,261	93.2
Twice	340	3.8
Three times	21	0.2
Four times	1	0.0
Unknown (no registration number)	238	2.7
<b>Total</b>	<b>8,861</b>	<b>100.0</b>

# highlights



## *Geographical*

- The *City of Port Adelaide Enfield* recorded the **greatest number of thefts** during the year with 1,161 followed by the *Cities of Adelaide* (913), *Salisbury* (910) and *Charles Sturt* (837). Of LGA's with more than 20 thefts, the *District Council of Mallala* recorded the lowest recovery rate with 62.1% recovered.
- LGA's which recorded a **strong increase in vehicle theft** compared to the previous year included the *Cities of Marion* (up 49 thefts, or 10.6%), *Campbelltown* (up 39 thefts, or 20.9%) and *Mount Gambier* (up 19 thefts to 68). In regional areas, an increase was noted in the *District Council of Barossa* (up from 23 thefts to 39).
- The *City of Onkaparinga* **recorded the greatest fall**, down 24.7% compared to the previous year (down from 881 thefts to 663) followed by the *Cities of Salisbury* (down 155 thefts, or 14.6%) and *Norwood Payneham St Peters* (down 49 thefts, or 14.2%).
- The street remained the most common **location for vehicle theft** accounting for 48.7% of motor vehicle thefts during 2003/2004, while a further 22.3% were taken from car parks and 21.7% were taken from either the driveway or front/backyard of a dwelling.
- **Recovery rates** were particularly low for vehicles stolen from a shed (39.7% recovered) whereas those stolen from the street or a carpark were more likely to be recovered (87% and 86.6% recovered respectively).
- Postcodes that recorded **significantly more recoveries** than thefts were:

Postcode (and examples of suburbs it includes)	No. of thefts	No. recovered
5110 (Bolivar, Direk, Globe Derby Park, St Kilda, Waterloo Corner)	34	86
5113 (Davoren Park, Elizabeth Downs, Elizabeth North)	180	229
5012 (Athol Park, Mansfield Park, Woodville Gardens)	114	154



**Table 5.10 South Australia - Thefts and recoveries by location type of theft, 2003/2004.**

Location Type	Number of thefts	% of thefts	Number of thefts recovered	% of recoveries	% of thefts recovered in the year
BEACH	4	0.0	2	0.0	50.0
BUSINESS PREMISES	420	4.5	303	3.9	72.1
CAR PARK - ATTENDED	18	0.2	17	0.2	94.4
CAR PARK - EDUCATIONAL	53	0.6	50	0.6	94.3
CAR PARK - HOTEL/CLUB	348	3.8	302	3.8	86.8
CAR PARK - MEDICAL	54	0.6	51	0.6	94.4
CAR PARK - OTHER	449	4.9	389	4.9	86.6
CAR PARK - PRIVATE	168	1.8	150	1.9	89.3
CAR PARK - RAILWAY STATION	61	0.7	55	0.7	90.2
CAR PARK - RECREATIONAL	86	0.9	77	1.0	89.5
CAR PARK - SHOPPING CENTRE	656	7.1	549	7.0	83.7
CAR PARK - UNITS/FLATS	172	1.9	149	1.9	86.6
CAR YARD	19	0.2	15	0.2	78.9
CLIFF	2	0.0	2	0.0	100.0
CREEK	1	0.0	1	0.0	100.0
DIRT TRACK	3	0.0	2	0.0	66.7
FACTORY	3	0.0	3	0.0	100.0
FARM	20	0.2	10	0.1	50.0
FLAT	1	0.0	0	0.0	0.0
FOOTPATH	2	0.0	1	0.0	50.0
HOUSE - DRIVEWAY	1,707	18.5	1,512	19.2	88.6
HOUSE - FRONT YARD	216	2.3	171	2.2	79.2
HOUSE - REAR YARD	81	0.9	42	0.5	51.9
MEDIAN STRIP	1	0.0	1	0.0	100.0
OVAL	1	0.0	1	0.0	100.0
PARKLANDS	3	0.0	3	0.0	100.0
PETROL STATION	4	0.0	3	0.0	75.0
RESERVE	8	0.1	5	0.1	62.5
SCRUB LAND	4	0.0	4	0.1	100.0
SHED	146	1.6	58	0.7	39.7
STREET	4,500	48.7	3,916	49.8	87.0
VACANT LAND	12	0.1	9	0.1	75.0
UNKNOWN	23	0.2	9	0.1	39.1

"Recovered" is based on the number of thefts that were recorded stolen in the Postcode during the reporting period and recovered by the end of the reporting period.

**Table 5.11 South Australia - Thefts and recoveries by Local Government Area of theft, 2003/2004.**

Local Government Area	Number of thefts	Number of thefts in the previous year	% of thefts	Number of thefts recovered	% of recoveries	% of thefts recovered in the year
ADELAIDE (C)	913	996	9.9	781	9.9	85.5
ADELAIDE HILLS (DC)	44	40	0.5	29	0.4	65.9
ALEXANDRINA (DC)	21	35	0.2	16	0.2	76.2
BAROSSA (DC)	39	23	0.4	26	0.3	66.7
BARUNGA WEST (DC)	2	3	0.0	1	0.0	50
BERRI AND BARMERA (DC)	16	21	0.2	12	0.2	75
BURNSIDE (C)	180	190	1.9	155	2.0	86.1
CAMPBELLTOWN (C)	226	187	2.4	205	2.6	90.7
CEDUNA (DC)	7	11	0.1	6	0.1	85.7
CHARLES STURT (C)	837	932	9.1	715	9.1	85.4
CLARE AND GILBERT VALLEYS (DC)	14	12	0.2	8	0.1	57.1
CLEVE (DC)	0	3	0.0	0	0.0	-
COOPER PEDY (DC)	30	44	0.3	22	0.3	73.3
COPPER COAST (DC)	21	19	0.2	16	0.2	76.2
ELLISTON (DC)	1	0	0.0	1	0.0	100
FLINDERS RANGES (DC)	2	1	0.0	2	0.0	100
FRANKLIN HARBOR (DC)	0	2	0.0	0	0.0	-
GAWLER (M)	127	116	1.4	100	1.3	78.7
GOYDER (DC)	6	4	0.1	3	0.0	50
GRANT (DC)	15	10	0.2	11	0.1	73.3
HOLDFAST BAY (C)	293	276	3.2	262	3.3	89.4
KANGAROO ISLAND (DC)	1	3	0.0	1	0.0	100
KAROONDA EAST MURRAY (DC)	0	1	0.0	0	0.0	-
KIMBA (DC)	1	0	0.0	1	0.0	100
LACEPEDE (DC)	4	1	0.0	3	0.0	75
LE HUNTE (DC)	0	1	0.0	0	0.0	-
LIGHT (DC)	19	15	0.2	11	0.1	57.9
LOWER EYRE PENINSULA (DC)	4	5	0.0	1	0.0	25
LOXTON WAIKERIE (DC)	24	17	0.3	19	0.2	79.2
MALLALA (DC)	29	30	0.3	18	0.2	62.1
MARION (C)	513	464	5.5	475	6.0	92.6
MID MURRAY (DC)	9	22	0.1	6	0.1	66.7
MITCHAM (C)	230	217	2.5	202	2.6	87.8
MOUNT BARKER (DC)	38	36	0.4	33	0.4	86.8
MOUNT GAMBIER (C)	68	49	0.7	60	0.8	88.2
MOUNT REMARKABLE (DC)	4	3	0.0	2	0.0	50
MURRAY BRIDGE (RC)	82	83	0.9	67	0.9	81.7
NARACOORTE AND LUCINDALE (DC)	13	9	0.1	6	0.1	46.2
NORTHERN AREAS (DC)	3	2	0.0	1	0.0	33.3
NORWOOD PAYNEHAM ST PETERS (C)	295	344	3.2	258	3.3	87.5
ONKAPARINGA (C)	663	881	7.2	570	7.3	86
PETERBOROUGH (DC)	3	3	0.0	3	0.0	100
PLAYFORD (C)	644	662	7.0	539	6.9	83.7
PORT ADELAIDE ENFIELD (C)	1161	1157	12.6	999	12.7	86

Continued on the next page

**Table 5.11 South Australia - Thefts and recoveries by Local Government Area of theft, 2003/2004. (Continued)**

Local Government Area	Number of thefts	Number of thefts in the previous year	% of thefts	Number of thefts recovered	% of recoveries	% of thefts recovered in the year
PORT AUGUSTA (C)	92	78	1.0	83	1.1	90.2
PORT LINCOLN (C)	44	46	0.5	39	0.5	88.6
PORT PIRIE CITY AND DIST (M)	38	39	0.4	31	0.4	81.6
PROSPECT (C)	155	181	1.7	122	1.6	78.7
REMARK PARINGA (DC)	13	17	0.1	9	0.1	69.2
ROBE (DC)	2	3	0.0	1	0.0	50
ROXBURY DOWNS (M)	10	14	0.1	10	0.1	100
SALISBURY (C)	910	1065	9.8	744	9.5	81.8
SOUTHERN MALLEE (DC)	1	7	0.0	1	0.0	100
STREAKY BAY (DC)	0	1	0.0	0	0.0	-
TATIARA (DC)	6	10	0.1	3	0.0	50
TEA TREE GULLY (C)	514	576	5.6	443	5.6	86.2
THE COORONG (DC)	13	13	0.1	10	0.1	76.9
TUMBY BAY (DC)	0	3	0.0	0	0.0	-
UNINCORP. FAR NORTH RANGES	14	19	0.2	11	0.1	78.6
UNINCORP. FLINDERS RANGES	1	0	0.0	1	0.0	100
UNINCORP. LINCOLN	0	2	0.0	0	0.0	-
UNINCORP. RIVERLAND	0	1	0.0	0	0.0	-
UNINCORP. WEST COAST	2	2	0.0	2	0.0	100
UNLEY (C)	265	247	2.9	222	2.8	83.8
VICTOR HARBOR (DC)	26	31	0.3	25	0.3	96.2
WAKEFIELD (DC)	5	9	0.1	2	0.0	40
WALKERVILLE (M)	36	48	0.4	28	0.4	77.8
WATTLE RANGE (DC)	16	19	0.2	15	0.2	93.8
WEST TORRENS (C)	414	431	4.5	360	4.6	87
WHYALLA (C)	50	63	0.5	42	0.5	84
YANKALILLA (DC)	6	11	0.1	4	0.1	66.7
YORKE PENINSULA (DC)	11	11	0.1	8	0.1	72.7
ADELAIDE (C)	913	996	9.9	781	9.9	85.5
ADELAIDE HILLS (DC)	44	40	0.5	29	0.4	65.9

"Recovered" is based on the number of thefts that were recorded stolen in the LGA during the reporting period and recovered by the end of the reporting period. C = Cities, DC = District Councils, M = Municipalities/Municipal Councils, RC = Rural Cities.

**Table 5.12 South Australia - Location of theft by postcode of owner, 2003/2004.**

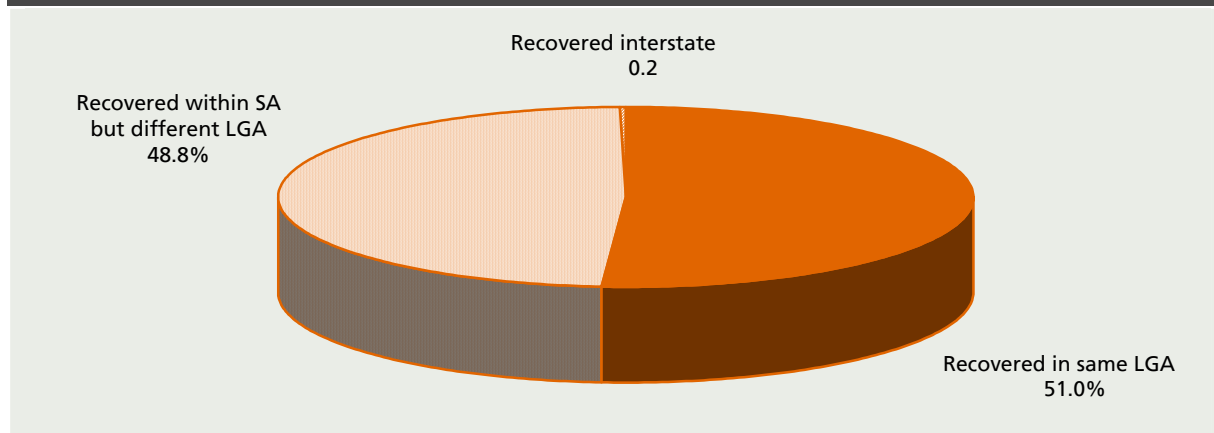
Location of theft	Number	% of thefts
Theft occurred within owners postcode	4,612	49.9
Theft occurred outside owners postcode	4,630	50.1
Unknown	4	0.0
<b>Total</b>	<b>9,246</b>	<b>100.0</b>

**Table 5.13 South Australia - Location of recovery by Local Government Area (LGA) of theft, 2003/2004.**

Location of recovery	Number	% of recoveries
SA thefts recovered within the same LGA as the theft	4,008	51.0
SA thefts recovered in a different LGA in SA	3,837	48.8
SA thefts recovered interstate	17	0.2
<b>Total</b>	<b>7,862</b>	<b>100.0</b>

"Recovered" is based on the number of thefts that were recorded stolen during the reporting period and recovered by the end of the reporting period.

**Figure 5.4 South Australia - Location of recovery by Local Government Area (LGA) of theft, 2003/2004.**

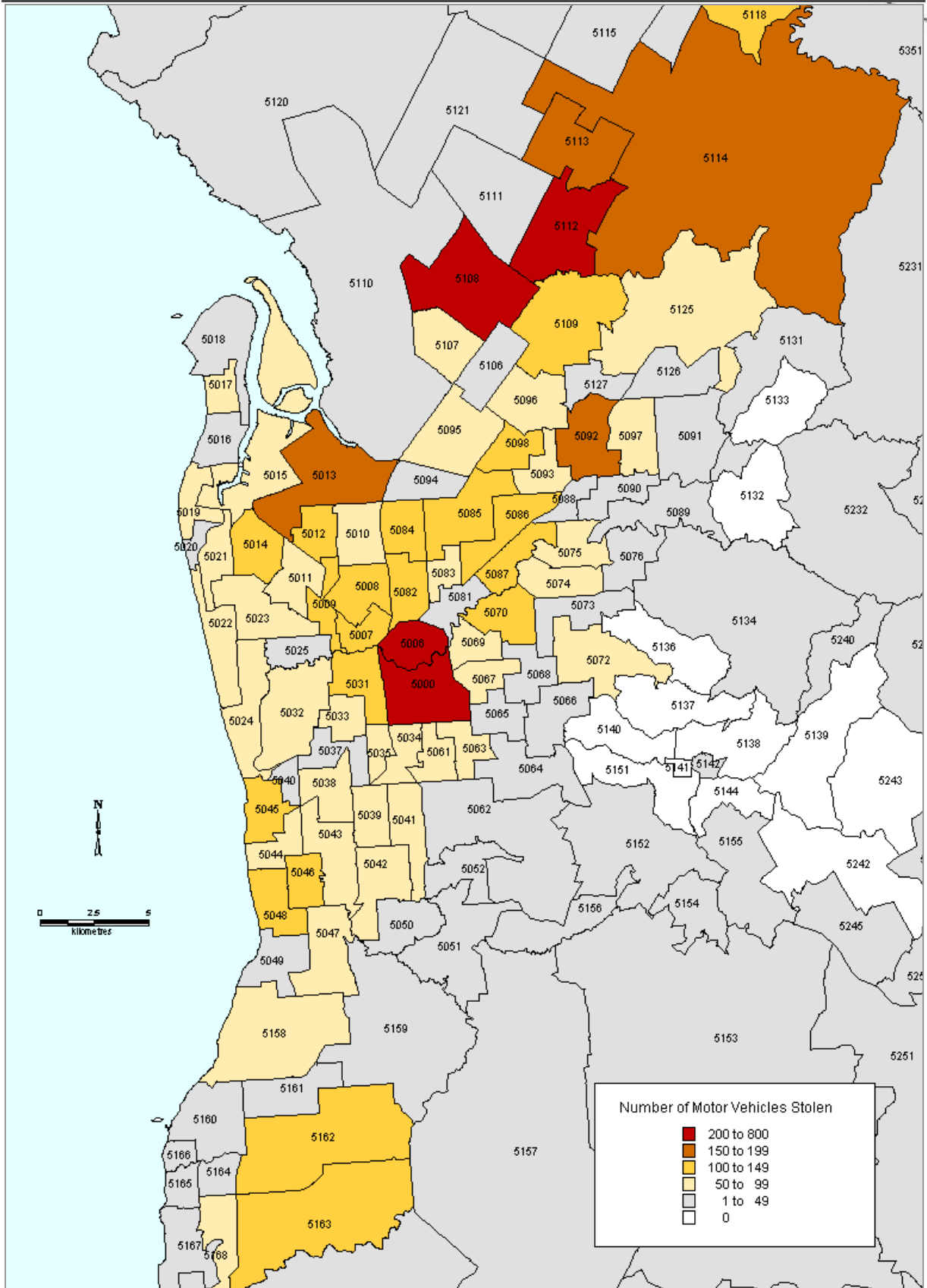


**Table 5.14 South Australia - Top hotspots, 2003/2004.**

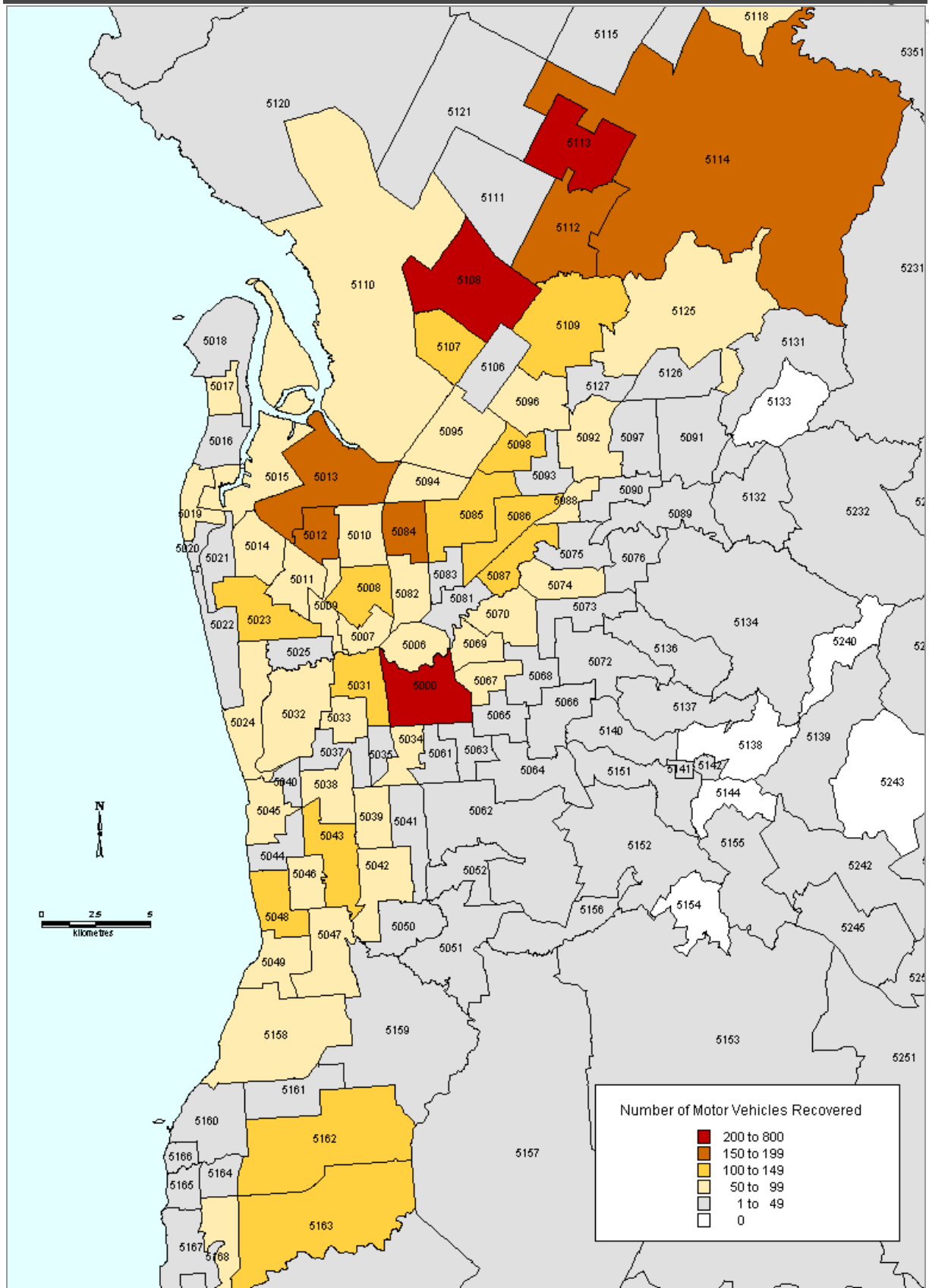
Ranking	Street and Suburb	Number of thefts	% of thefts	Number of thefts recovered	% of recoveries	% of thefts recovered in the year
1	NORTH EAST RD, MODBURY	74	0.8	60	0.8	81.1
2	NORTH TCE, ADELAIDE	56	0.6	53	0.7	94.6
3	ELIZABETH WAY, ELIZABETH	55	0.6	42	0.5	76.4
4	TORRENS RD, KILKENNY	47	0.5	44	0.6	93.6
5	DIAGONAL RD, OAKLANDS PARK	44	0.5	42	0.5	95.5
6	SMART RD, MODBURY	35	0.4	29	0.4	82.9
7	MONTAGUE RD, INGLE FARM	34	0.4	32	0.4	94.1
8	VICTORIA DR, ADELAIDE	33	0.4	27	0.3	81.8
9	RUNDLE ST, ADELAIDE	32	0.3	27	0.3	84.4
10	PORT RD, HINDMARSH	29	0.3	24	0.3	82.8
11	BREBNER DR, WEST LAKES	24	0.3	19	0.2	79.2
11	RUNDLE RD, ADELAIDE	24	0.3	17	0.2	70.8
11	WAR MEMORIAL DR, ADELAIDE	24	0.3	19	0.2	79.2
14	MAIN NORTH RD, SMITHFIELD	22	0.2	15	0.2	68.2
15	GAWLER ST, SALISBURY	21	0.2	18	0.2	85.7
15	JOHN ST, SALISBURY	21	0.2	14	0.2	66.7
15	KINTORE AVE, ADELAIDE	21	0.2	15	0.2	71.4
	WAR MEMORIAL DR, NORTH ADELAIDE	20	0.2	13	0.2	65.0
18	GRAND JUNCTION RD, ROSEWATER	19	0.2	15	0.2	78.9
19	HANSON RD, KILKENNY	19	0.2	18	0.2	94.7
19	SOUTH TCE, ADELAIDE	19	0.2	14	0.2	73.7
19	WOODVILLE RD, WOODVILLE	19	0.2	16	0.2	84.2

"Recovered" is based on the number of thefts that were recorded stolen in the Postcode during the reporting period and recovered by the end of the reporting period. Street and suburb is exactly as it appears in the CARS extract (no error checking has occurred).

**Figure 5.5 South Australia - Location of theft by selected postcodes around Adelaide, 2003/2004.**



**Figure 5.6 South Australia - Location of recovery by selected postcodes around Adelaide, 2003/2004.**



**Table 5.15 South Australia - Thefts and recoveries by postcode of theft, 2003/2004.**

Postcode	Number of thefts	% of thefts	Number of thefts recovered	% of recoveries	% of thefts recovered in the year
5000	712	7.7	604	7.7	84.8
5006	200	2.2	174	2.2	87.0
5007	108	1.2	90	1.1	83.3
5008	127	1.4	106	1.3	83.5
5009	109	1.2	96	1.2	88.1
5010	54	0.6	45	0.6	83.3
5011	86	0.9	78	1.0	90.7
5012	114	1.2	103	1.3	90.4
5013	156	1.7	132	1.7	84.6
5014	101	1.1	86	1.1	85.1
5015	89	1.0	83	1.1	93.3
5016	33	0.4	31	0.4	93.9
5017	56	0.6	52	0.7	92.9
5018	14	0.2	11	0.1	78.6
5019	78	0.8	72	0.9	92.3
5020	10	0.1	10	0.1	100.0
5021	59	0.6	43	0.5	72.9
5022	77	0.8	67	0.9	87.0
5023	99	1.1	83	1.1	83.8
5024	50	0.5	45	0.6	90.0
5025	21	0.2	18	0.2	85.7
5031	140	1.5	120	1.5	85.7
5032	62	0.7	53	0.7	85.5
5033	73	0.8	63	0.8	86.3
5034	89	1.0	75	1.0	84.3
5035	51	0.6	45	0.6	88.2
5037	44	0.5	39	0.5	88.6
5038	95	1.0	89	1.1	93.7
5039	80	0.9	63	0.8	78.8
5040	8	0.1	7	0.1	87.5
5041	55	0.6	51	0.6	92.7
5042	74	0.8	66	0.8	89.2
5043	98	1.1	92	1.2	93.9
5044	52	0.6	50	0.6	96.2
5045	130	1.4	114	1.5	87.7
5046	103	1.1	97	1.2	94.2
5047	63	0.7	58	0.7	92.1
5048	134	1.4	123	1.6	91.8
5049	47	0.5	42	0.5	89.4
5050	17	0.2	15	0.2	88.2
5051	29	0.3	26	0.3	89.7
5052	8	0.1	8	0.1	100.0
5061	62	0.7	55	0.7	88.7
5062	41	0.4	37	0.5	90.2
5063	70	0.8	55	0.7	78.6
5064	35	0.4	29	0.4	82.9
5065	48	0.5	43	0.5	89.6
5066	45	0.5	39	0.5	86.7
5067	98	1.1	84	1.1	85.7

Continued on the next page



**Table 5.15 South Australia - Thefts and recoveries by postcode of theft, 2003/2004  
(Continued).**

Postcode	Number of thefts	% of thefts	Number of thefts recovered	% of recoveries	% of thefts recovered in the year
5068	49	0.5	44	0.6	89.8
5069	57	0.6	50	0.6	87.7
5070	124	1.3	108	1.4	87.1
5072	50	0.5	44	0.6	88.0
5073	45	0.5	38	0.5	84.4
5074	92	1.0	82	1.0	89.1
5075	57	0.6	56	0.7	98.2
5076	12	0.1	11	0.1	91.7
5081	45	0.5	35	0.4	77.8
5082	125	1.4	100	1.3	80.0
5083	66	0.7	55	0.7	83.3
5084	133	1.4	102	1.3	76.7
5085	121	1.3	104	1.3	86.0
5086	122	1.3	105	1.3	86.1
5087	121	1.3	102	1.3	84.3
5088	31	0.3	26	0.3	83.9
5089	26	0.3	23	0.3	88.5
5090	33	0.4	29	0.4	87.9
5091	36	0.4	30	0.4	83.3
5092	183	2.0	157	2.0	85.8
5093	55	0.6	46	0.6	83.6
5094	47	0.5	35	0.4	74.5
5095	69	0.7	51	0.6	73.9
5096	83	0.9	72	0.9	86.7
5097	50	0.5	40	0.5	80.0
5098	132	1.4	123	1.6	93.2
5106	13	0.1	8	0.1	61.5
5107	86	0.9	71	0.9	82.6
5108	332	3.6	266	3.4	80.1
5109	102	1.1	86	1.1	84.3
5110	34	0.4	21	0.3	61.8
5111	1	0.0	1	0.0	100.0
5112	248	2.7	206	2.6	83.1
5113	180	1.9	153	1.9	85.0
5114	166	1.8	144	1.8	86.7
5115	30	0.3	24	0.3	80.0
5116	28	0.3	24	0.3	85.7
5117	6	0.1	4	0.1	66.7
5118	108	1.2	81	1.0	75.0
5120	11	0.1	7	0.1	63.6
5121	4	0.0	2	0.0	50.0
5125	71	0.8	60	0.8	84.5
5126	34	0.4	29	0.4	85.3
5127	29	0.3	27	0.3	93.1
5131	3	0.0	1	0.0	33.3
5134	3	0.0	1	0.0	33.3
5142	1	0.0	1	0.0	100.0

Continued on the next page

**Table 5.15 South Australia - Thefts and recoveries by postcode of theft, 2003/2004  
(Continued).**

Postcode	Number of thefts	% of thefts	Number of thefts recovered	% of recoveries	% of thefts recovered in the year
5152	5	0.1	5	0.1	100.0
5153	5	0.1	5	0.1	100.0
5154	2	0.0	2	0.0	100.0
5155	2	0.0	1	0.0	50.0
5156	3	0.0	2	0.0	66.7
5157	8	0.1	1	0.0	12.5
5158	62	0.7	57	0.7	91.9
5159	37	0.4	33	0.4	89.2
5160	23	0.2	18	0.2	78.3
5161	37	0.4	32	0.4	86.5
5162	144	1.6	125	1.6	86.8
5163	109	1.2	100	1.3	91.7
5164	36	0.4	30	0.4	83.3
5165	25	0.3	24	0.3	96.0
5166	4	0.0	4	0.1	100.0
5167	23	0.2	21	0.3	91.3
5168	89	1.0	80	1.0	89.9
5169	39	0.4	34	0.4	87.2
5170	9	0.1	9	0.1	100.0
5171	11	0.1	6	0.1	54.5
5172	12	0.1	9	0.1	75.0
5173	22	0.2	16	0.2	72.7
5174	3	0.0	1	0.0	33.3
5201	2	0.0	1	0.0	50.0
5202	1	0.0	1	0.0	100.0
5204	5	0.1	3	0.0	60.0
5210	2	0.0	1	0.0	50.0
5211	27	0.3	25	0.3	92.6
5212	2	0.0	2	0.0	100.0
5213	2	0.0	2	0.0	100.0
5214	6	0.1	5	0.1	83.3
5223	2	0.0	1	0.0	50.0
5231	1	0.0	1	0.0	100.0
5232	1	0.0	0	0.0	0.0
5233	2	0.0	2	0.0	100.0
5234	5	0.1	2	0.0	40.0
5235	2	0.0	0	0.0	0.0
5236	1	0.0	1	0.0	100.0
5237	1	0.0	0	0.0	0.0
5238	4	0.0	4	0.1	100.0
5240	1	0.0	1	0.0	100.0
5241	5	0.1	5	0.1	100.0
5244	3	0.0	1	0.0	33.3
5245	1	0.0	0	0.0	0.0
5250	3	0.0	2	0.0	66.7
5251	27	0.3	25	0.3	92.6
5252	3	0.0	3	0.0	100.0

Continued on the next page

**Table 5.15 South Australia - Thefts and recoveries by postcode of theft, 2003/2004  
(Continued).**

Postcode	Number of thefts	% of thefts	Number of thefts recovered	% of recoveries	% of thefts recovered in the year
5253	76	0.8	64	0.8	84.2
5254	3	0.0	3	0.0	100.0
5255	8	0.1	6	0.1	75.0
5259	4	0.0	1	0.0	25.0
5260	8	0.1	6	0.1	75.0
5262	3	0.0	0	0.0	0.0
5263	1	0.0	1	0.0	100.0
5264	4	0.0	3	0.0	75.0
5267	15	0.2	11	0.1	73.3
5268	3	0.0	2	0.0	66.7
5271	10	0.1	6	0.1	60.0
5272	1	0.0	0	0.0	0.0
5275	3	0.0	3	0.0	100.0
5276	2	0.0	1	0.0	50.0
5277	5	0.1	3	0.0	60.0
5279	3	0.0	3	0.0	100.0
5280	8	0.1	7	0.1	87.5
5290	78	0.8	71	0.9	91.0
5291	12	0.1	8	0.1	66.7
5304	1	0.0	1	0.0	100.0
5311	1	0.0	0	0.0	0.0
5320	2	0.0	1	0.0	50.0
5321	1	0.0	0	0.0	0.0
5322	3	0.0	2	0.0	66.7
5330	6	0.1	5	0.1	83.3
5333	14	0.2	12	0.2	85.7
5340	2	0.0	0	0.0	0.0
5341	12	0.1	10	0.1	83.3
5342	2	0.0	2	0.0	100.0
5343	6	0.1	3	0.0	50.0
5344	1	0.0	0	0.0	0.0
5345	7	0.1	7	0.1	100.0
5350	2	0.0	2	0.0	100.0
5351	8	0.1	4	0.1	50.0
5352	11	0.1	8	0.1	72.7
5353	1	0.0	1	0.0	100.0
5355	13	0.1	9	0.1	69.2
5356	1	0.0	0	0.0	0.0
5357	1	0.0	1	0.0	100.0
5371	4	0.0	3	0.0	75.0
5373	5	0.1	3	0.0	60.0
5374	2	0.0	0	0.0	0.0
5400	1	0.0	1	0.0	100.0
5411	1	0.0	0	0.0	0.0
5412	1	0.0	0	0.0	0.0
5413	1	0.0	1	0.0	100.0
5417	1	0.0	1	0.0	100.0
5419	1	0.0	1	0.0	100.0

Continued on the next page

**Table 5.15 South Australia - Thefts and recoveries by postcode of theft, 2003/2004  
(Continued).**

Postcode	Number of thefts	% of thefts	Number of thefts recovered	% of recoveries	% of thefts recovered in the year
5422	3	0.0	3	0.0	100.0
5433	2	0.0	2	0.0	100.0
5440	1	0.0	1	0.0	100.0
5451	3	0.0	3	0.0	100.0
5452	1	0.0	1	0.0	100.0
5453	7	0.1	3	0.0	42.9
5454	2	0.0	1	0.0	50.0
5461	1	0.0	0	0.0	0.0
5462	1	0.0	1	0.0	100.0
5495	3	0.0	1	0.0	33.3
5501	12	0.1	5	0.1	41.7
5502	2	0.0	1	0.0	50.0
5510	1	0.0	0	0.0	0.0
5520	1	0.0	1	0.0	100.0
5522	1	0.0	0	0.0	0.0
5523	3	0.0	1	0.0	33.3
5540	40	0.4	33	0.4	82.5
5550	1	0.0	0	0.0	0.0
5554	6	0.1	5	0.1	83.3
5555	1	0.0	1	0.0	100.0
5556	6	0.1	4	0.1	66.7
5558	9	0.1	7	0.1	77.8
5570	2	0.0	0	0.0	0.0
5573	7	0.1	6	0.1	85.7
5575	2	0.0	2	0.0	100.0
5576	1	0.0	1	0.0	100.0
5577	1	0.0	1	0.0	100.0
5582	2	0.0	2	0.0	100.0
5600	22	0.2	19	0.2	86.4
5606	67	0.7	56	0.7	83.6
5607	1	0.0	0	0.0	0.0
5608	24	0.3	19	0.2	79.2
5609	4	0.0	4	0.1	100.0
5631	1	0.0	0	0.0	0.0
5641	1	0.0	1	0.0	100.0
5690	8	0.1	7	0.1	87.5
5700	88	1.0	79	1.0	89.8
5710	3	0.0	3	0.0	100.0
5723	30	0.3	22	0.3	73.3
5724	8	0.1	6	0.1	75.0
5725	11	0.1	11	0.1	100.0
5732	1	0.0	1	0.0	100.0
5734	5	0.1	5	0.1	100.0
5950	7	0.1	6	0.1	85.7
Unknown	7	0.1	5	0.1	71.4

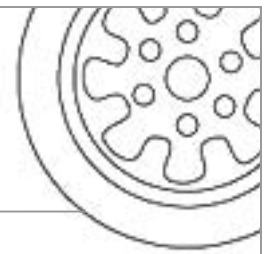
"Recovered" is based on the number of thefts that were recorded stolen in the Postcode during the reporting period and recovered by the end of the reporting period. Postcodes not listed in the table had no thefts recorded during the reporting period.

**Table 5.16 South Australia- Top locations for recovery by postcode, 2003/2004.**

Ranking	Postcode	Number of thefts	% of thefts	Number of recoveries	% of recoveries
1	5000	712	7.7	299	3.2
2	5113	180	1.9	229	2.5
3	5108	332	3.6	220	2.4
4	5114	166	1.8	178	1.9
5	5084	133	1.4	164	1.8
6	5012	114	1.2	154	1.7
6	5013	156	1.7	154	1.7
8	5112	248	2.7	150	1.6
9	5087	121	1.3	137	1.5
10	5008	127	1.4	131	1.4
11	5163	109	1.2	126	1.4
12	5023	99	1.1	125	1.4
13	5031	140	1.5	123	1.3
14	5162	144	1.6	119	1.3
15	5048	134	1.4	114	1.2
15	5109	102	1.1	114	1.2
17	5086	122	1.3	113	1.2
18	5085	121	1.3	112	1.2
19	5043	98	1.1	111	1.2
20	5098	132	1.4	107	1.2

"Number of thefts recovered" refers to the number of thefts that were recovered in the Postcode during the reporting period regardless of where the theft occurred.

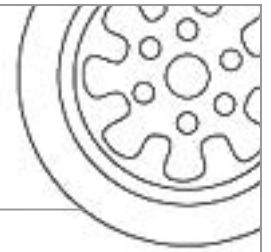
# highlights



## *Vehicle Profile*

- As at 31st December 2003, South Australia had a registered fleet of over **1 million vehicles** with just over half of the fleet (51.4%) aged 10 years or more. Of the passenger and light commercial vehicles less than 10 years old, 49.7% were factory-fitted with an immobiliser that meets the current Australian Standard.
- A comparison of theft rates by body type revealed that motorcycles had the **highest theft rate** with 11.73 thefts per 1,000 registered vehicles. This was followed by sedans and station wagons with rates of 9.64 and 8.09 (per 1,000 registrations) respectively.
- Despite the high theft rates, the majority of the sedans, station wagons and vans stolen during the year were recovered compared to **motorcycles and plant/equipment** which had very low recovery rates (27% and 41.0% recovered respectively).
- Vehicles **manufactured in the 1980s** recorded a theft rate of 18.60 thefts per 1,000 registrations compared to 3.92 thefts for 1990s models and 2.31 for 2000-2003 models.
- Although significantly less likely to be stolen, newer models have a much lower recovery rate. Models **manufactured from 2000 onwards** recorded a recovery rate of 60.3% compared to 88.6% for 1980s models and 83.3% for 1990s models.
- The **top passenger/light commercial vehicles** stolen (aged less than 10 years) were Holden Commodore VS (90 thefts, 86.7% recovered), Holden Commodore VT 82 thefts, 80.5% recovered), Holden Commodore VR (49 thefts, 79.6% recovered), Hyundai Excel X3 (35 thefts, 85.7% recovered). Of the top 20 stolen vehicles, Subaru Impreza WRX recorded the lowest recovery rate with 60.0% recovered.

# highlights



- A total of **393 motorcycles were stolen** during the 2003/2004 financial year, accounting for 4.3% of all thefts. Theft of these vehicles rose by 7.1% over the previous year, which recorded 367 thefts. The recovery rate dropped slightly with 27.0% recovered compared to 33.2% previously.
- Amongst motorcycles, the **most popular theft targets** were Yamaha (146) and Honda (112) followed by Kawasaki (44) and Suzuki (38). Of the top four models, Honda recorded the lowest recovery rate with only 21.4% recovered.
- Of the motorcycles stolen with an **engine capacity of 200cc or less**, 22.1% were recovered compared to 34.5% recovered for those with an engine capacity greater than 200cc.
- Nearly half (48.1%) of the motorcycles stolen were manufactured from 2000 onwards and overall these vehicles recorded a **mean age of 7.1 years**. In contrast, the mean age of the passenger/light commercial vehicles stolen was 17.5 years.

**Table 5.17 South Australia - Vehicles registered at 31st December 2003.**

Vehicle body Type	Manufactured 10 or more years ago	Manufactured less than 10 years ago	Unknown year of manufacture	Total
Motorcycles	8,617	18,865	6,025	33,507
Other Vehicles	70,888	33,936	1,080	105,904
Passenger and Light Commercial Vehicles	497,944	485,906	29	983,879
<b>Total Vehicles Registered</b>	<b>577,449</b>	<b>538,707</b>	<b>7,134</b>	<b>1,123,290</b>

Other vehicles includes buses, trucks, plant and equipment and other unknown body types not categorised elsewhere. \n The above table is based on SA registration figures received as an electronic extract. Less than 10 years old = vehicles manufactured post-1993 for the 2003 registration snapshot.

**Table 5.18 South Australia - Passenger/light commercial vehicles registered at 31st December 2003 by immobiliser presence (models less than 10 years old).**

Immobiliser type	Number Registered	% of fleet (less than 10 years old)
Australian Standard Immobiliser	241,403	49.7
Non-Australian Standard Immobiliser	88,520	18.2
No Immobiliser	155,983	32.1

AS Immobiliser implies an immobiliser that meets the Australian Standard was fitted as standard equipment by the manufacturer. Non AS Immobiliser implies an immobiliser was fitted as standard equipment by the manufacturer but the type of immobiliser fitted fails to meet the Australian Standard. If an immobiliser was offered as an optional extra then we have assumed that it was not fitted. The above utilises vehicle specification data provided by Polk Autospec and Insurance Australia Group. Less than 10 years old = vehicles manufactured post-1993 for the 2003 registration snapshot.

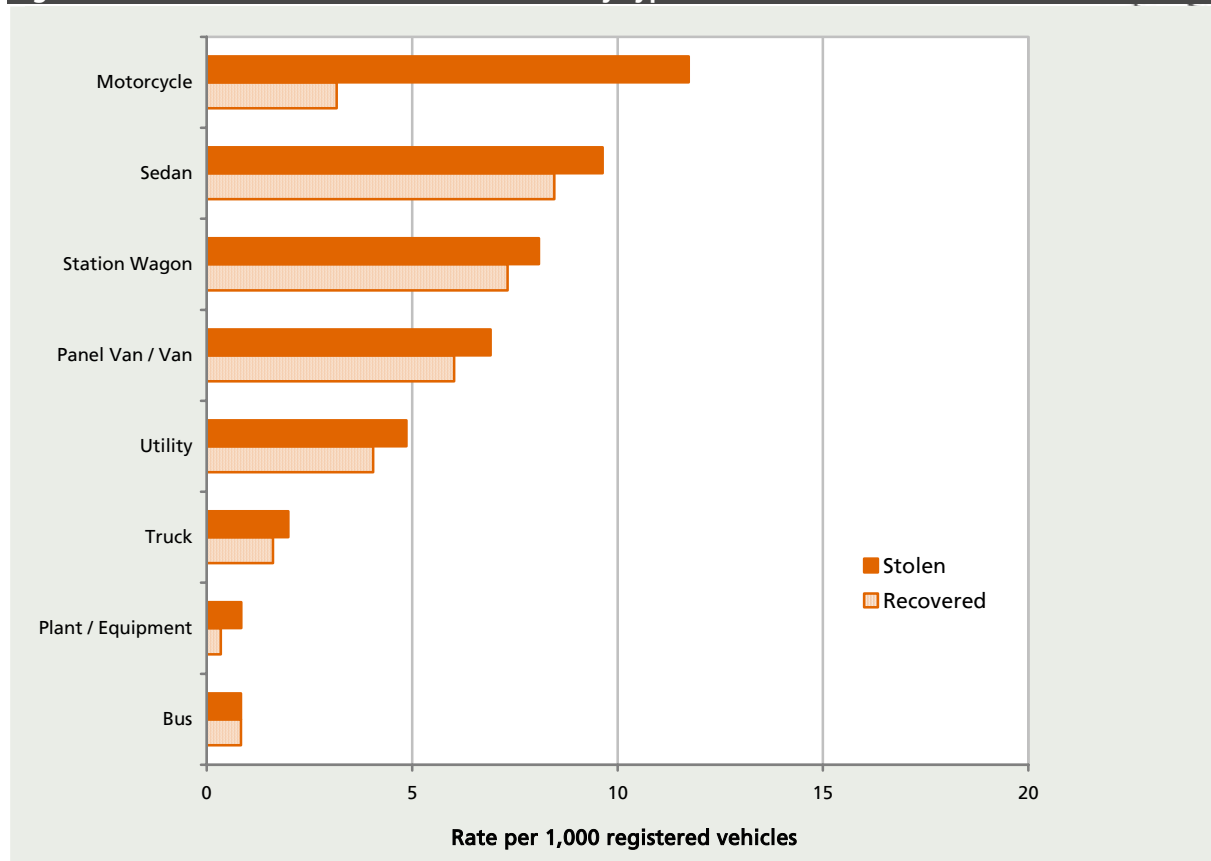
**Table 5.19 South Australia - Thefts and recoveries by type of vehicle, 2003/2004.**

Body Type	Number of thefts	% of thefts	Theft rate per 1,000 registrations	Number of thefts recovered	% of recoveries	% of thefts recovered in the year
Sedan	6,580	71.2	9.64	5,774	73.4	87.8
Station Wagon	1,448	15.7	8.09	1,310	16.7	90.5
Utility	430	4.7	4.86	358	4.6	83.3
Panel Van / Van	233	2.5	6.91	203	2.6	87.1
Truck	99	1.1	1.99	80	1.0	80.8
Bus	3	0.0	0.83	3	0.0	100.0
Motorcycle*	393	4.3	11.73	106	1.3	27.0
Plant / Equipment	39	0.4	0.84	16	0.2	41.0
Unknown	8	0.1	1.33	3	0.0	37.5

Recovered is based on the number of thefts that were recorded stolen during the reporting period and recovered by the end of the reporting period. Rates are based on electronic extracts from each jurisdiction's registration authority as at 31/12/2003. \* Rates for these vehicles may be an overestimate as a number of these types of vehicles may not be driven on public roads and therefore not registered.



**Figure 5.7 South Australia - Rate of theft by type of vehicle, 2003/2004.**



**Table 5.20 South Australia - Passenger and light commercial vehicles stolen and recovered by immobiliser presence (models less than 10 years old), 2003/2004.**

Immobiliser Status	Number of thefts	% of thefts	Theft rate per 1,000 registrations	Number of thefts recovered	% of recoveries	% of thefts recovered in the year
Australian Standard	389	38.9	1.61	319	38.8	82.0
Non-Australian Standard	334	33.4	3.77	273	33.2	81.7
No Immobiliser	276	27.6	1.77	231	28.1	83.7

A.S. Immobiliser' implies an immobiliser that meets the Australian Standard was fitted as 'standard' equipment by the manufacturer. 'Non A.S. Immobiliser' implies an immobiliser was fitted as 'standard' equipment by the manufacturer but the type of immobiliser fitted fails to meet the Australian Standard. If an immobiliser was offered as an optional extra then we have assumed (for the purpose of this analysis) that it was not fitted. The above utilises vehicle specification data provided by Polk Autospec and NRMA Insurance. Rates are based on electronic extracts from each jurisdiction's registration authority as at 31/12/2003. Less than 10 years old = vehicles manufactured post-1994 for thefts in 2004; post-93 for thefts in 2003.

**Table 5.21 South Australia - Motorcycle thefts and recoveries by engine size, 2003/2004.**

Engine Capacity	Number of thefts	% of thefts	Number of thefts recovered	% of recoveries	% of thefts recovered in the year
50 cc or less	47	12.0	9	8.5	19.1
51 - 100 cc	41	10.4	12	11.3	29.3
101 - 150 cc	22	5.6	4	3.8	18.2
151 -200 cc	12	3.1	2	1.9	16.7
201 - 250 cc	70	17.8	22	20.8	31.4
251 - 500 cc	27	6.9	7	6.6	25.9
501 - 750 cc	35	8.9	13	12.3	37.1
751 - 1000 cc	10	2.5	7	6.6	70.0
1001 cc or more	3	0.8	1	0.9	33.3
Unknown	126	32.1	29	27.4	23.0
<b>Total</b>	<b>393</b>	<b>100.0</b>	<b>106</b>	<b>100.0</b>	<b>27.0</b>

'Recovered' is based on the number of thefts that were recorded stolen during the reporting period and recovered by the end of the reporting period.

**Table 5.22 South Australia - Thefts and recoveries of all motor vehicles by manufacturer, 2003/2004.**

Manufacturer	Number of thefts	% of thefts	Number of thefts recovered	% of recoveries	% of thefts recovered in the year
ALFA ROMEO	12	0.1	10	0.1	83.3
APRILIA	1	0.0	1	0.0	100.0
ATLAS	1	0.0	0	0.0	0.0
AUDI	3	0.0	2	0.0	66.7
AUSTIN	1	0.0	0	0.0	0.0
BEDFORD	3	0.0	2	0.0	66.7
BMW	29	0.3	21	0.3	72.4
BOBCAT	7	0.1	1	0.0	14.3
BOLWELL	4	0.0	1	0.0	25.0
CASE	2	0.0	1	0.0	50.0
CATERPILLAR	4	0.0	3	0.0	75.0
CHEVROLET	2	0.0	2	0.0	100.0
CHRYSLER	49	0.5	43	0.5	87.8
CLARK	1	0.0	1	0.0	100.0
CUSTOM MADE	2	0.0	0	0.0	0.0
DAEWOO	22	0.2	19	0.2	86.4
DAIHATSU	31	0.3	27	0.3	87.1
DEUTZ	1	0.0	1	0.0	100.0
DINGO	1	0.0	1	0.0	100.0
DODGE	1	0.0	1	0.0	100.0
DUCATI	2	0.0	2	0.0	100.0
FERGUSON	1	0.0	1	0.0	100.0
FIAT	1	0.0	1	0.0	100.0
FORD	2,017	21.8	1,741	22.1	86.3
FREIGHTLINER	1	0.0	1	0.0	100.0
HARLEY DAVIDSON	3	0.0	1	0.0	33.3
HAULMARK	1	0.0	0	0.0	0.0
HILLMAN	1	0.0	0	0.0	0.0
HINO	4	0.0	4	0.1	100.0
HOLDEN	3,488	37.7	3,059	38.9	87.7
HONDA	190	2.1	98	1.2	51.6
HSV	9	0.1	4	0.1	44.4
HYUNDAI	78	0.8	68	0.9	87.2
INTERNATIONAL	5	0.1	4	0.1	80.0
ISEKI	1	0.0	0	0.0	0.0
ISUZU	12	0.1	11	0.1	91.7
JAGUAR	8	0.1	7	0.1	87.5
JCB	2	0.0	1	0.0	50.0
JEEP	5	0.1	5	0.1	100.0
KAWASAKI	44	0.5	13	0.2	29.5
KENWORTH	2	0.0	2	0.0	100.0
KIA	8	0.1	7	0.1	87.5
KTM	10	0.1	1	0.0	10.0
KUBOTA	1	0.0	0	0.0	0.0
LAND ROVER	7	0.1	5	0.1	71.4
LEXUS	1	0.0	1	0.0	100.0
LEYLAND	5	0.1	4	0.1	80.0
LIGHTBURN	2	0.0	0	0.0	0.0

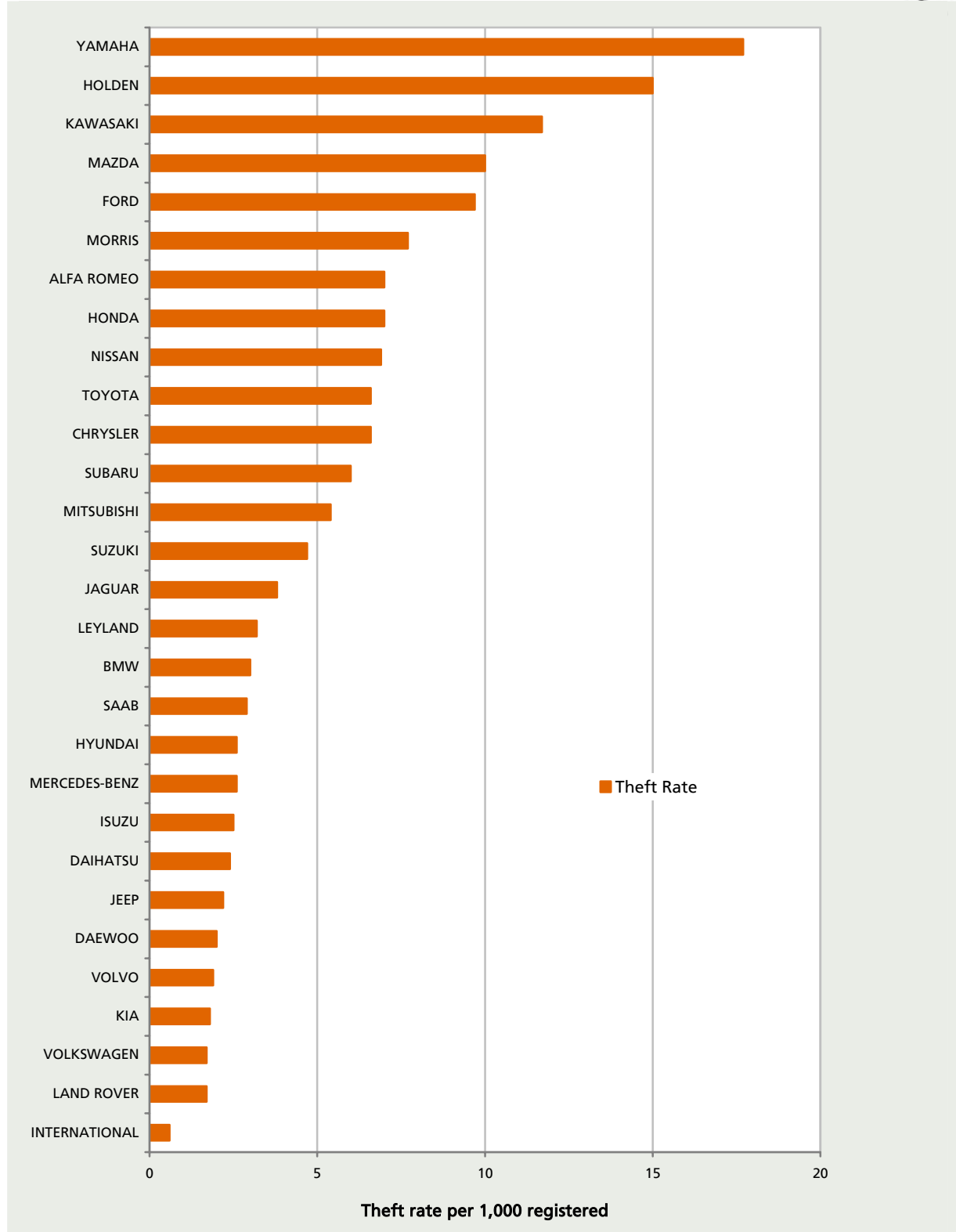
Continued on the next page

**Table 5.22 South Australia - Thefts and recoveries of all motor vehicles by manufacturer, 2003/2004 (Continued).**

Manufacturer	Number of thefts	% of thefts	Number of thefts recovered	% of recoveries	% of thefts recovered in the year
MACK	1	0.0	1	0.0	100.0
MALAGUTI	1	0.0	0	0.0	0.0
MASSEY FERGUSON	2	0.0	0	0.0	0.0
MAZDA	416	4.5	386	4.9	92.8
MERCEDES-BENZ	29	0.3	22	0.3	75.9
MG	2	0.0	2	0.0	100.0
MITSUBISHI	635	6.9	546	6.9	86.0
MORRIS	10	0.1	9	0.1	90.0
MOTOGUZZI	1	0.0	1	0.0	100.0
N237	1	0.0	0	0.0	0.0
NISSAN	487	5.3	430	5.5	88.3
OLYMPIC	1	0.0	0	0.0	0.0
PEUGEOT	4	0.0	2	0.0	50.0
PONTIAC	1	0.0	1	0.0	100.0
PORSCHE	4	0.0	4	0.1	100.0
PROTON	4	0.0	3	0.0	75.0
RANGE ROVER	2	0.0	1	0.0	50.0
RENAULT	3	0.0	3	0.0	100.0
ROLLS-ROYCE	1	0.0	1	0.0	100.0
ROVER	5	0.1	5	0.1	100.0
SAAB	5	0.1	5	0.1	100.0
STANDARD	1	0.0	0	0.0	0.0
SUBARU	108	1.2	95	1.2	88.0
SUZUKI	72	0.8	49	0.6	68.1
TATA	1	0.0	0	0.0	0.0
TGB	1	0.0	0	0.0	0.0
TOYOTA	1,136	12.3	1,044	13.3	91.9
TRIUMPH	3	0.0	2	0.0	66.7
VESPA	3	0.0	0	0.0	0.0
VOLKSWAGEN	11	0.1	7	0.1	63.6
VOLVO	14	0.2	12	0.2	85.7
WESTERN STAR	1	0.0	0	0.0	0.0
WHITE	2	0.0	0	0.0	0.0
WINDSOR	1	0.0	0	0.0	0.0
YAMAHA	148	1.6	43	0.5	29.1
YAWMAR	2	0.0	1	0.0	50.0
UNKNOWN	41	0.4	9	0.1	22.0
<b>Total</b>	<b>9,246</b>	<b>100.0</b>	<b>7,862</b>	<b>100.0</b>	<b>85.0</b>

'Recovered' is based on the number of thefts that were recorded stolen during the reporting period and recovered by the end of the reporting period.

**Figure 5.8 South Australia - Rate of theft per 1,000 registered vehicles by manufacturer, 2003/2004.**



Note: All rates by manufacturer that have been based on less than 1000 registrations and makes with less than 5 thefts have been excluded from the graph.

**Table 5.23 South Australia - Thefts and recoveries of vehicles by manufacturer and vehicle type, 2003/2004.**

Manufacturer	Number of thefts	% of thefts	Number of thefts recovered	% of recoveries	% of thefts recovered in the year
<b>Motorcycles</b>					
APRILIA	1	0.3	1	0.9	100.0
BMW	1	0.3	1	0.9	100.0
BOLWELL	4	1.0	1	0.9	25.0
CUSTOM MADE	2	0.5	0	0.0	0.0
DUCATI	2	0.5	2	1.9	100.0
HARLEY DAVIDSON	3	0.8	1	0.9	33.3
HONDA	112	28.5	24	22.6	21.4
KAWASAKI	44	11.2	13	12.3	29.5
KTM	10	2.5	1	0.9	10.0
MALAGUTI	1	0.3	0	0.0	0.0
MOTOGUZZI	1	0.3	1	0.9	100.0
SUZUKI	38	9.7	17	16.0	44.7
TGB	1	0.3	0	0.0	0.0
TRIUMPH	2	0.5	1	0.9	50.0
VESPA	3	0.8	0	0.0	0.0
YAMAHA	146	37.2	42	39.6	28.8
UNKNOWN	22	5.6	1	0.9	4.5
<b>Total - Motorcycles</b>	<b>393</b>	<b>100.0</b>	<b>106</b>	<b>100.0</b>	<b>27.0</b>
<b>Passenger vehicles</b>					
ALFA ROMEO	12	0.1	10	0.1	83.3
AUDI	3	0.0	2	0.0	66.7
AUSTIN	1	0.0	0	0.0	0.0
BEDFORD	1	0.0	1	0.0	100.0
BMW	28	0.3	20	0.3	71.4
CHEVROLET	1	0.0	1	0.0	100.0
CHRYSLER	49	0.6	43	0.6	87.8
DAEWOO	22	0.3	19	0.2	86.4
DAIHATSU	30	0.3	26	0.3	86.7
DODGE	1	0.0	1	0.0	100.0
FIAT	1	0.0	1	0.0	100.0
FORD	2,002	23.0	1,729	22.6	86.4
HILLMAN	1	0.0	0	0.0	0.0
HOLDEN	3,469	39.9	3,043	39.8	87.7
HONDA	77	0.9	74	1.0	96.1
HSV	9	0.1	4	0.1	44.4
HYUNDAI	78	0.9	68	0.9	87.2
ISUZU	4	0.0	3	0.0	75.0
JAGUAR	8	0.1	7	0.1	87.5
JEEP	5	0.1	5	0.1	100.0
KIA	8	0.1	7	0.1	87.5
LAND ROVER	6	0.1	4	0.1	66.7
LEXUS	1	0.0	1	0.0	100.0
LEYLAND	4	0.0	3	0.0	75.0
MAZDA	411	4.7	381	5.0	92.7
MERCEDES-BENZ	28	0.3	21	0.3	75.0
MG	2	0.0	2	0.0	100.0

Continued on the next page

**Table 5.23 South Australia - Thefts and recoveries of vehicles by manufacturer and vehicle type, 2003/2004 (Continued).**

Manufacturer	Number of thefts	% of thefts	Number of thefts recovered	% of recoveries	% of thefts recovered in the year
<b>Passenger vehicles - cont.</b>					
MITSUBISHI	623	7.2	539	7.1	86.5
MORRIS	10	0.1	9	0.1	90.0
N237	1	0.0	0	0.0	0.0
NISSAN	480	5.5	423	5.5	88.1
PEUGEOT	4	0.0	2	0.0	50.0
PONTIAC	1	0.0	1	0.0	100.0
PORSCHE	4	0.0	4	0.1	100.0
PROTON	4	0.0	3	0.0	75.0
RANGE ROVER	2	0.0	1	0.0	50.0
RENAULT	3	0.0	3	0.0	100.0
ROLLS-ROYCE	1	0.0	1	0.0	100.0
ROVER	5	0.1	5	0.1	100.0
SAAB	5	0.1	5	0.1	100.0
SUBARU	108	1.2	95	1.2	88.0
SUZUKI	33	0.4	31	0.4	93.9
TATA	1	0.0	0	0.0	0.0
TOYOTA	1,116	12.8	1,026	13.4	91.9
TRIUMPH	1	0.0	1	0.0	100.0
VOLKSWAGEN	11	0.1	7	0.1	63.6
VOLVO	12	0.1	11	0.1	91.7
UNKNOWN	5	0.1	2	0.0	40.0
<b>Total - Passenger vehicles</b>	<b>8,692</b>	<b>100.0</b>	<b>7,645</b>	<b>100.0</b>	<b>88.0</b>
<b>Other vehicles</b>					
ATLAS	1	0.7	0	0.0	0.0
BEDFORD	2	1.3	1	0.9	50.0
BOBCAT	7	4.6	1	0.9	14.3
CASE	2	1.3	1	0.9	50.0
CATERPILLAR	4	2.6	3	2.8	75.0
CHEVROLET	1	0.7	1	0.9	100.0
CLARK	1	0.7	1	0.9	100.0
DAIHATSU	1	0.7	1	0.9	100.0
DEUTZ	1	0.7	1	0.9	100.0
DINGO	1	0.7	1	0.9	100.0
FERGUSON	1	0.7	1	0.9	100.0
FORD	15	9.8	12	11.1	80.0
FREIGHTLINER	1	0.7	1	0.9	100.0
HAULMARK	1	0.7	0	0.0	0.0
HINO	4	2.6	4	3.7	100.0
HOLDEN	19	12.4	16	14.8	84.2
INTERNATIONAL	5	3.3	4	3.7	80.0
ISEKI	1	0.7	0	0.0	0.0
ISUZU	8	5.2	8	7.4	100.0
JCB	2	1.3	1	0.9	50.0
KENWORTH	2	1.3	2	1.9	100.0
KUBOTA	1	0.7	0	0.0	0.0
LEYLAND	1	0.7	1	0.9	100.0

Continued on the next page

**Table 5.23 South Australia - Thefts and recoveries of vehicles by manufacturer and vehicle type, 2003/2004 (Continued).**

Manufacturer	Number of thefts	% of thefts	Number of thefts recovered	% of recoveries	% of thefts recovered in the year
<b>Other vehicles - cont.</b>					
LIGHTBURN	2	1.3	0	0.0	0.0
MACK	1	0.7	1	0.9	100.0
MASSEY FERGUSON	2	1.3	0	0.0	0.0
MAZDA	5	3.3	5	4.6	100.0
MERCEDES-BENZ	1	0.7	1	0.9	100.0
MITSUBISHI	12	7.8	7	6.5	58.3
NISSAN	7	4.6	7	6.5	100.0
SUZUKI	1	0.7	1	0.9	100.0
TOYOTA	20	13.1	18	16.7	90.0
VOLVO	2	1.3	1	0.9	50.0
WESTERN STAR	1	0.7	0	0.0	0.0
WHITE	2	1.3	0	0.0	0.0
WINDSOR	1	0.7	0	0.0	0.0
YAWMAR	2	1.3	1	0.9	50.0
UNKNOWN	12	7.8	5	4.6	41.7
<b>Total - Other vehicles</b>	<b>153</b>	<b>100.0</b>	<b>108</b>	<b>100.0</b>	<b>70.6</b>



**Table 5.24 South Australia - Number of passenger vehicles stolen and recovered during 2003/2004 by make, model, series (less than 10 years old).**

Make/Model/Series	Number of thefts	% of thefts	Theft rate per 1,000 registrations	Number of thefts recovered	% of recoveries	% of thefts recovered in the year
ALFA ROMEO 156	1	0.1	3.70	1	0.1	100.0
BMW 318i E36	1	0.1	1.68	1	0.1	100.0
BMW 318i E46	1	0.1	1.13	0	0.0	0.0
BMW 320i E46	1	0.1	9.62	1	0.1	100.0
BMW 325i E36	3	0.3	49.18	2	0.2	66.7
BMW 328i E46	1	0.1	33.33	1	0.1	100.0
BMW 523i E39	1	0.1	7.75	1	0.1	100.0
CHRYSLER PT CRUISER	1	0.1	4.78	1	0.1	100.0
DAEWOO 1.5i	3	0.3	4.41	3	0.4	100.0
DAEWOO CIELO	5	0.5	3.49	4	0.5	80.0
DAEWOO ESPERO	3	0.3	6.59	2	0.2	66.7
DAEWOO LANOS	4	0.4	1.00	4	0.5	100.0
DAEWOO MUSSO	2	0.2	6.33	2	0.2	100.0
DAEWOO NUBIRA	5	0.5	2.11	4	0.5	80.0
DAIHATSU CHARADE G202	1	0.1	1.64	1	0.1	100.0
DAIHATSU CHARADE G203	4	0.4	5.94	2	0.2	50.0
DAIHATSU CUORE	1	0.1	4.37	1	0.1	100.0
DAIHATSU MOVE L601	1	0.1	23.81	1	0.1	100.0
DAIHATSU PYZAR G303	1	0.1	4.29	1	0.1	100.0
DAIHATSU SIRION M100	1	0.1	0.95	1	0.1	100.0
FORD COURIER PD	1	0.1	0.70	1	0.1	100.0
FORD COURIER PE	1	0.1	0.53	1	0.1	100.0
FORD ECONOVAN	7	0.7	8.46	7	0.9	100.0
FORD ECONOVAN JG	1	0.1	2.92	0	0.0	0.0
FORD ECONOVAN JH	1	0.1	2.21	0	0.0	0.0
FORD F250 RM	2	0.2	7.66	2	0.2	100.0
FORD FAIRLANE AU	1	0.1	2.67	0	0.0	0.0
FORD FAIRLANE BA	1	0.1	8.40	1	0.1	100.0
FORD FAIRLANE NC	1	0.1	3.45	0	0.0	0.0
FORD FAIRLANE NF	1	0.1	1.56	0	0.0	0.0
FORD FAIRLANE NL	2	0.2	3.40	2	0.2	100.0
FORD FAIRMONT AU	2	0.2	1.69	2	0.2	100.0
FORD FAIRMONT AU II	1	0.1	1.48	1	0.1	100.0
FORD FAIRMONT EF	6	0.6	2.63	5	0.6	83.3
FORD FAIRMONT EL	3	0.3	2.27	3	0.4	100.0
FORD FALCON AU	22	2.2	3.18	19	2.3	86.4
FORD FALCON AU II	11	1.1	1.79	11	1.3	100.0
FORD FALCON AU III	2	0.2	0.73	2	0.2	100.0
FORD FALCON BA	11	1.1	2.30	11	1.3	100.0
FORD FALCON ED	5	0.5	2.00	3	0.4	60.0
FORD FALCON EF	28	2.8	2.63	21	2.6	75.0
FORD FALCON EL	19	1.9	2.12	15	1.8	78.9
FORD FALCON UTE AU II	4	0.4	2.67	3	0.4	75.0
FORD FALCON UTE BA	6	0.6	4.67	6	0.7	100.0
FORD FALCON UTE XG	3	0.3	2.80	3	0.4	100.0
FORD FALCON UTE XH	1	0.1	1.18	1	0.1	100.0
FORD FALCON UTE XH II	4	0.4	5.56	3	0.4	75.0
FORD FALCON XH II	1	0.1	18.52	1	0.1	100.0

Continued on the next page

**Table 5.24 South Australia - Number of passenger vehicles stolen and recovered during 2003/2004 by make, model, series (less than 10 years old) Continued.**

Make/Model/Series	Number of thefts	% of thefts	Theft rate per 1,000 registrations	Number of thefts recovered	% of recoveries	% of thefts recovered in the year
FORD FESTIVA WB	4	0.4	1.05	4	0.5	100.0
FORD FESTIVA WD	1	0.1	0.71	1	0.1	100.0
FORD FESTIVA WF	13	1.3	2.64	11	1.3	84.6
FORD FOCUS LR	1	0.1	0.90	0	0.0	0.0
FORD LASER KH	1	0.1	1.21	0	0.0	0.0
FORD LASER KJ	2	0.2	0.64	2	0.2	100.0
FORD LASER KN	2	0.2	1.06	2	0.2	100.0
FORD LASER KQ	2	0.2	0.85	1	0.1	50.0
FORD MONDEO HB	1	0.1	1.29	1	0.1	100.0
FORD PROBE ST	1	0.1	6.13	1	0.1	100.0
FORD TELSTAR TX5 AY	1	0.1	5.10	1	0.1	100.0
FORD TRANSIT VF	1	0.1	8.93	1	0.1	100.0
FORD TRANSIT VG	2	0.2	2.79	2	0.2	100.0
HOLDEN ASTRA TR	3	0.3	3.39	3	0.4	100.0
HOLDEN ASTRA TS	6	0.6	0.73	4	0.5	66.7
HOLDEN BARINA (Unknown series)	1	0.1	-	1	0.1	100.0
HOLDEN BARINA SB	8	0.8	1.78	6	0.7	75.0
HOLDEN BARINA XC	2	0.2	0.98	2	0.2	100.0
HOLDEN CALAIS VR	4	0.4	10.75	1	0.1	25.0
HOLDEN CALAIS VS	2	0.2	3.25	1	0.1	50.0
HOLDEN CALAIS VT	2	0.2	2.29	1	0.1	50.0
HOLDEN CALAIS VT II	1	0.1	5.52	1	0.1	100.0
HOLDEN CALAIS VY	3	0.3	6.52	2	0.2	66.7
HOLDEN CALIBRA YE	3	0.3	40.00	2	0.2	66.7
HOLDEN CAPRICE VS	1	0.1	5.81	0	0.0	0.0
HOLDEN CAPRICE WH	2	0.2	11.63	1	0.1	50.0
HOLDEN COMMODORE ONE TONNER VY	1	0.1	11.90	1	0.1	100.0
HOLDEN COMMODORE VP	2	0.2	23.26	0	0.0	0.0
HOLDEN COMMODORE VR	49	4.9	6.02	39	4.7	79.6
HOLDEN COMMODORE VS	90	9.0	5.00	78	9.5	86.7
HOLDEN COMMODORE VSIII	20	2.0	6.52	16	1.9	80.0
HOLDEN COMMODORE VT	82	8.2	3.66	66	8.0	80.5
HOLDEN COMMODORE VT II	4	0.4	4.12	3	0.4	75.0
HOLDEN COMMODORE VU	9	0.9	6.31	6	0.7	66.7
HOLDEN COMMODORE VX	27	2.7	1.81	24	2.9	88.9
HOLDEN COMMODORE VX II	2	0.2	83.33	1	0.1	50.0
HOLDEN COMMODORE VY	22	2.2	2.23	18	2.2	81.8
HOLDEN MONARO V2 II	1	0.1	41.67	1	0.1	100.0
HOLDEN MONARO V2 III	4	0.4	8.79	3	0.4	75.0
HOLDEN NOVA LF	1	0.1	3.07	1	0.1	100.0
HOLDEN RODEO G3	2	0.2	2.67	2	0.2	100.0
HOLDEN RODEO G6	1	0.1	2.10	1	0.1	100.0
HOLDEN RODEO R7	2	0.2	2.29	1	0.1	50.0
HOLDEN RODEO R9	2	0.2	0.48	1	0.1	50.0
HOLDEN RODEO RA	2	0.2	2.03	2	0.2	100.0
HOLDEN STATESMAN VR	1	0.1	2.16	1	0.1	100.0
HOLDEN STATESMAN VS	5	0.5	3.31	4	0.5	80.0

Continued on the next page

**Table 5.24 South Australia - Number of passenger vehicles stolen and recovered during 2003/2004 by make, model, series (less than 10 years old) Continued.**

Make/Model/Series	Number of thefts	% of thefts	Theft rate per 1,000 registrations	Number of thefts recovered	% of recoveries	% of thefts recovered in the year
HOLDEN STATESMAN WH	2	0.2	1.32	1	0.1	50.0
HOLDEN VECTRA JS	1	0.1	0.76	1	0.1	100.0
HOLDEN VECTRA ZC	1	0.1	5.29	1	0.1	100.0
HONDA ACCORD	1	0.1	0.58	1	0.1	100.0
HONDA CIVIC	5	0.5	1.53	4	0.5	80.0
HONDA CR-V	1	0.1	0.39	1	0.1	100.0
HONDA HR-V	1	0.1	3.68	1	0.1	100.0
HONDA INTEGRA	1	0.1	2.05	1	0.1	100.0
HONDA JAZZ	1	0.1	2.17	1	0.1	100.0
HONDA LEGEND	1	0.1	14.49	1	0.1	100.0
HSV CLUBSPORT VT	1	0.1	6.17	1	0.1	100.0
HSV CLUBSPORT VX	1	0.1	6.37	1	0.1	100.0
HSV CLUBSPORT VY	1	0.1	10.53	0	0.0	0.0
HSV GTS VX	1	0.1	55.56	0	0.0	0.0
HSV MALOO VS	1	0.1	25.64	1	0.1	100.0
HSV MALOO VY	1	0.1	29.41	1	0.1	100.0
HSV MANTA VT	1	0.1	76.92	0	0.0	0.0
HSV SENATOR VT	2	0.2	50.00	0	0.0	0.0
HYUNDAI ACCENT	7	0.7	2.50	7	0.9	100.0
HYUNDAI COUPE RD	1	0.1	14.49	1	0.1	100.0
HYUNDAI COUPE RD II	1	0.1	1.74	1	0.1	100.0
HYUNDAI ELANTRA	1	0.1	250.00	0	0.0	0.0
HYUNDAI EXCEL	1	0.1	1.65	1	0.1	100.0
HYUNDAI EXCEL X3	35	3.5	2.76	30	3.6	85.7
HYUNDAI GETZ	2	0.2	2.48	2	0.2	100.0
HYUNDAI LANTRA J3	3	0.3	2.70	2	0.2	66.7
HYUNDAI SONATA	2	0.2	1.43	2	0.2	100.0
HYUNDAI SONATA EF	1	0.1	1.52	1	0.1	100.0
ISUZU NPR300 N4	1	0.1	-	0	0.0	0.0
JEEP CHEROKEE KJ	1	0.1	5.43	1	0.1	100.0
JEEP CHEROKEE XJ	2	0.2	1.95	2	0.2	100.0
JEEP WRANGLER TJ	1	0.1	3.95	1	0.1	100.0
KIA CARNIVAL	1	0.1	1.95	1	0.1	100.0
KIA MENTOR	1	0.1	1.30	1	0.1	100.0
KIA RIO	5	0.5	3.44	5	0.6	100.0
KIA SPORTAGE	1	0.1	1.10	0	0.0	0.0
LAND ROVER DISCOVERY	3	0.3	1.57	2	0.2	66.7
LAND ROVER FREELANDER	2	0.2	4.93	2	0.2	100.0
LAND ROVER RANGE ROVER	1	0.1	3.94	0	0.0	0.0
LEXUS IS200	1	0.1	4.07	1	0.1	100.0
MAZDA 121	2	0.2	1.06	2	0.2	100.0
MAZDA 6	1	0.1	1.04	0	0.0	0.0
MAZDA 626	8	0.8	3.91	8	1.0	100.0
MAZDA B2600 BRAVO	2	0.2	1.57	2	0.2	100.0
MAZDA E2000	3	0.3	5.15	3	0.4	100.0
MAZDA EUNOS 30X	1	0.1	6.02	1	0.1	100.0
MAZDA EUNOS 800	1	0.1	11.90	1	0.1	100.0
MAZDA MPV	1	0.1	4.98	1	0.1	100.0

Continued on the next page

**Table 5.24 South Australia - Number of passenger vehicles stolen and recovered during 2003/2004 by make, model, series (less than 10 years old) Continued.**

Make/Model/Series	Number of thefts	% of thefts	Theft rate per 1,000 registrations	Number of thefts recovered	% of recoveries	% of thefts recovered in the year
MAZDA MX-6	1	0.1	5.88	1	0.1	100.0
MAZDA RX8	1	0.1	21.74	1	0.1	100.0
MAZDA TRIBUTE	1	0.1	0.90	1	0.1	100.0
MERCEDES-BENZ C180 W202	1	0.1	1.97	0	0.0	0.0
MERCEDES-BENZ C200 W202	1	0.1	3.64	1	0.1	100.0
MERCEDES-BENZ C240 W203	1	0.1	20.00	1	0.1	100.0
MERCEDES-BENZ E220 W124	1	0.1	18.18	1	0.1	100.0
MERCEDES-BENZ SLK230 R170	1	0.1	7.87	1	0.1	100.0
MITSUBISHI EXPRESS SH	1	0.1	7.63	1	0.1	100.0
MITSUBISHI EXPRESS SJ	8	0.8	4.49	8	1.0	100.0
MITSUBISHI LANCER CC	4	0.4	1.77	4	0.5	100.0
MITSUBISHI LANCER CE	17	1.7	2.05	14	1.7	82.4
MITSUBISHI MAGNA TE	6	0.6	1.78	6	0.7	100.0
MITSUBISHI MAGNA TF	8	0.8	1.47	6	0.7	75.0
MITSUBISHI MAGNA TH	7	0.7	2.09	7	0.9	100.0
MITSUBISHI MAGNA TJ II	6	0.6	0.88	5	0.6	83.3
MITSUBISHI MAGNA TL	3	0.3	2.73	2	0.2	66.7
MITSUBISHI MAGNA TR	1	0.1	2.34	1	0.1	100.0
MITSUBISHI MAGNA TS	11	1.1	1.66	9	1.1	81.8
MITSUBISHI MIRAGE CE	7	0.7	2.56	6	0.7	85.7
MITSUBISHI PAJERO NJ	2	0.2	1.92	1	0.1	50.0
MITSUBISHI PAJERO NK	1	0.1	3.69	0	0.0	0.0
MITSUBISHI PAJERO NL	2	0.2	2.55	2	0.2	100.0
MITSUBISHI PAJERO NM	1	0.1	0.81	1	0.1	100.0
MITSUBISHI PAJERO NP	2	0.2	3.80	1	0.1	50.0
MITSUBISHI TRITON MJ	1	0.1	1.15	1	0.1	100.0
MITSUBISHI TRITON MK	5	0.5	1.93	5	0.6	100.0
MITSUBISHI VERADA KE	1	0.1	3.64	1	0.1	100.0
MITSUBISHI VERADA KJ	1	0.1	1.50	1	0.1	100.0
MITSUBISHI VERADA KS	1	0.1	1.68	1	0.1	100.0
MITSUBISHI (Unknown model/series)	2	0.2	-	2	0.2	100.0
NISSAN 180SX	1	0.1	11.49	1	0.1	100.0
NISSAN 200SX S14	2	0.2	5.73	2	0.2	100.0
NISSAN BLUEBIRD (Unknown series)	1	0.1	-	1	0.1	100.0
NISSAN MAXIMA	2	0.2	52.63	2	0.2	100.0
NISSAN MAXIMA A32	1	0.1	1.81	1	0.1	100.0
NISSAN NAVARA	2	0.2	2.17	1	0.1	50.0
NISSAN NAVARA D22	2	0.2	1.42	2	0.2	100.0
NISSAN NX-R	1	0.1	18.52	1	0.1	100.0
NISSAN PATHFINDER	3	0.3	4.16	2	0.2	66.7
NISSAN PATROL GU	1	0.1	0.50	1	0.1	100.0
NISSAN PATROL GU II	2	0.2	0.87	1	0.1	50.0
NISSAN PULSAR N14	2	0.2	2.26	2	0.2	100.0
NISSAN PULSAR N15	11	1.1	2.70	10	1.2	90.9
NISSAN PULSAR N16	5	0.5	1.60	3	0.4	60.0
NISSAN SKYLINE	3	0.3	-	2	0.2	66.7
NISSAN TERRANO II	1	0.1	6.54	1	0.1	100.0

Continued on the next page

**Table 5.24 South Australia - Number of passenger vehicles stolen and recovered during 2003/2004 by make, model, series (less than 10 years old) Continued.**

Make/Model/Series	Number of thefts	% of thefts	Theft rate per 1,000 registrations	Number of thefts recovered	% of recoveries	% of thefts recovered in the year
NISSAN X-TRAIL T30	1	0.1	1.01	1	0.1	100.0
PEUGEOT 306	1	0.1	2.72	0	0.0	0.0
PEUGEOT 405 D70	1	0.1	7.09	1	0.1	100.0
PEUGEOT 406 D9	1	0.1	9.80	1	0.1	100.0
PROTON SATRIA	2	0.2	5.87	2	0.2	100.0
PROTON WIRA AEROBACK	2	0.2	32.79	1	0.1	50.0
SUBARU FORESTER 2.5XS	1	0.1	2.79	1	0.1	100.0
SUBARU FORESTER LIMITED	2	0.2	2.70	1	0.1	50.0
SUBARU FORESTER (Unknown series)	3	0.3	-	3	0.4	100.0
SUBARU IMPREZA GX 1.8 (4WD)	1	0.1	14.71	1	0.1	100.0
SUBARU IMPREZA GX AWD	1	0.1	4.44	1	0.1	100.0
SUBARU IMPREZA RS	1	0.1	13.51	1	0.1	100.0
SUBARU IMPREZA RX (4WD)	1	0.1	12.99	1	0.1	100.0
SUBARU IMPREZA WRX	10	1.0	6.12	6	0.7	60.0
SUBARU LIBERTY 4WD GX	1	0.1	27.78	1	0.1	100.0
SUBARU LIBERTY 4WD RS TURBO	1	0.1	166.67	1	0.1	100.0
SUBARU LIBERTY GX	1	0.1	0.98	1	0.1	100.0
SUBARU LIBERTY HERITAGE	2	0.2	10.47	2	0.2	100.0
SUBARU LIBERTY LX	1	0.1	2.79	1	0.1	100.0
SUBARU LIBERTY (Unknown series)	1	0.1	-	1	0.1	100.0
SUBARU OUTBACK LIMITED	1	0.1	2.45	0	0.0	0.0
SUZUKI BALENO	4	0.4	3.76	3	0.4	75.0
SUZUKI LIANA	2	0.2	9.62	2	0.2	100.0
SUZUKI SWIFT SF	1	0.1	0.72	1	0.1	100.0
SUZUKI VITARA	2	0.2	2.67	2	0.2	100.0
SUZUKI XL-7	1	0.1	5.62	1	0.1	100.0
TATA (Unknown model/series)	1	0.1	-	0	0.0	0.0
TOYOTA 4RUNNER (Unknown series)	1	0.1	-	0	0.0	0.0
TOYOTA 4RUNNER 130	1	0.1	5.03	1	0.1	100.0
TOYOTA AVALON MCX10R	1	0.1	0.49	1	0.1	100.0
TOYOTA CAMRY ACV36R	1	0.1	0.64	1	0.1	100.0
TOYOTA CAMRY MCV20R	1	0.1	0.36	1	0.1	100.0
TOYOTA CAMRY MCV36R	1	0.1	1.02	1	0.1	100.0
TOYOTA CAMRY SXV10	4	0.4	0.92	4	0.5	100.0
TOYOTA CAMRY SXV20R	4	0.4	0.66	2	0.2	50.0
TOYOTA CAMRY (Unknown series)	1	0.1	-	0	0.0	0.0
TOYOTA CELICA ST204	3	0.3	2.95	3	0.4	100.0
TOYOTA COROLLA AE101	4	0.4	1.11	3	0.4	75.0
TOYOTA COROLLA AE102	1	0.1	0.26	1	0.1	100.0
TOYOTA COROLLA AE112R	8	0.8	1.99	8	1.0	100.0
TOYOTA COROLLA ZZE122R	1	0.1	0.26	1	0.1	100.0
TOYOTA ECHO NCP10R	1	0.1	0.39	1	0.1	100.0
TOYOTA ECHO NCP12R	1	0.1	1.72	1	0.1	100.0
TOYOTA ECHO NCP13R	1	0.1	20.83	1	0.1	100.0
TOYOTA HIACE	6	0.6	1.73	5	0.6	83.3

Continued on the next page

**Table 5.24 South Australia - Number of passenger vehicles stolen and recovered during 2003/2004 by make, model, series (less than 10 years old) Continued.**

Make/Model/Series	Number of thefts	% of thefts	Theft rate per 1,000 registrations	Number of thefts recovered	% of recoveries	% of thefts recovered in the year
TOYOTA HILUX	16	1.6	1.66	16	1.9	100.0
TOYOTA LANDCRUISER 100 SERIES	7	0.7	1.80	6	0.7	85.7
TOYOTA LANDCRUISER 70 SERIES	5	0.5	2.00	4	0.5	80.0
TOYOTA LANDCRUISER 80 SERIES	1	0.1	0.32	1	0.1	100.0
TOYOTA LANDCRUISER PRADO 90 SERIES	3	0.3	1.11	3	0.4	100.0
TOYOTA LANDCRUISER (Unknown series)	1	0.1	-	1	0.1	100.0
TOYOTA LEXCEN VR & T4	4	0.4	5.16	3	0.4	75.0
TOYOTA MR2 SW20R	1	0.1	142.86	1	0.1	100.0
TOYOTA PASEO EL54	1	0.1	5.24	1	0.1	100.0
TOYOTA RAV4 ACA21R	1	0.1	0.55	0	0.0	0.0
TOYOTA RAV4 SXA10R	1	0.1	2.04	1	0.1	100.0
TOYOTA STARLET	4	0.4	1.81	2	0.2	50.0
TOYOTA TARAGO ACR30R	1	0.1	1.79	1	0.1	100.0
TOYOTA TARAGO TCR10	1	0.1	1.41	0	0.0	0.0
TOYOTA TARAGO (Unknown series)	1	0.1	-	1	0.1	100.0
TOYOTA TOWNACE SBV KR42R	2	0.2	4.42	2	0.2	100.0
TOYOTA TOWNACE YR39	1	0.1	4.24	1	0.1	100.0
TOYOTA VIENTA MCV20R	1	0.1	1.82	1	0.1	100.0
TOYOTA VIENTA VZV10	1	0.1	0.75	1	0.1	100.0
TOYOTA (Unknown model/series)	1	0.1	-	1	0.1	100.0
VOLKSWAGEN BORA	1	0.1	8.33	1	0.1	100.0
VOLVO 850	1	0.1	2.42	0	0.0	0.0
UNKNOWN Make/model/series	4	0.4	-	1	0.1	25.0

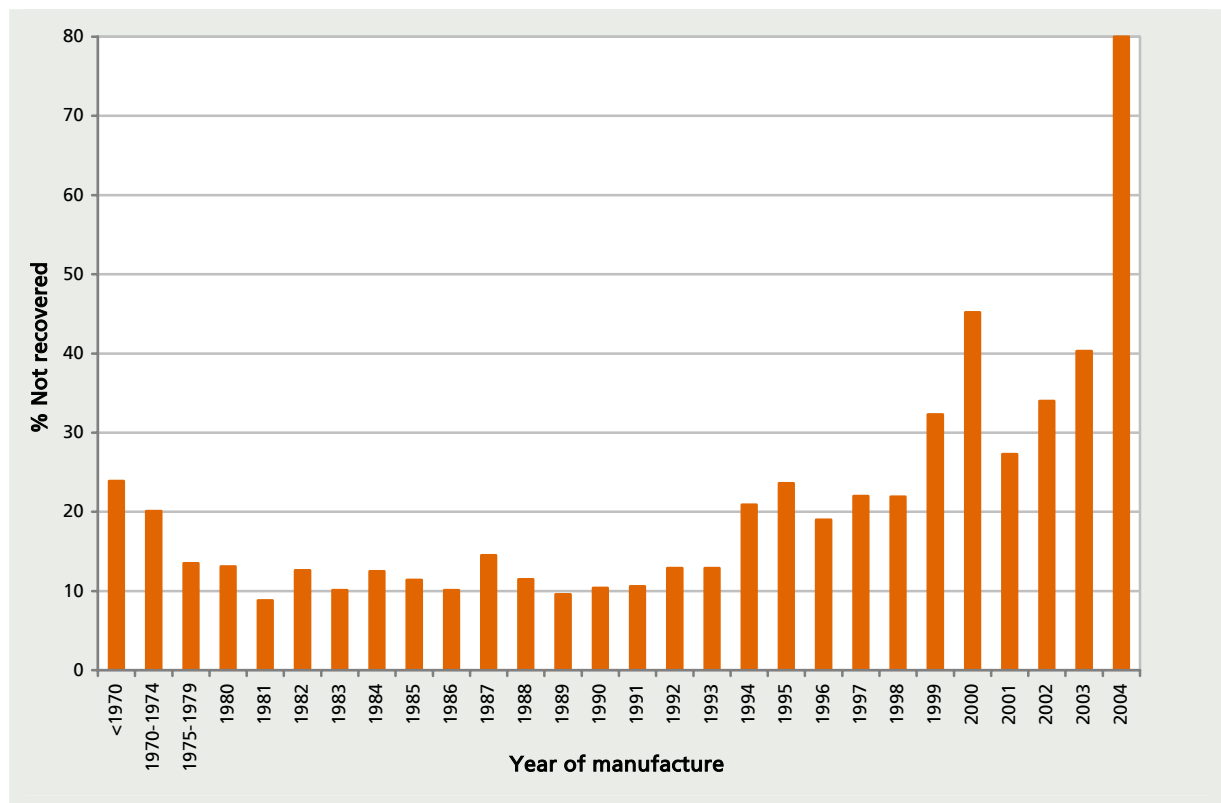
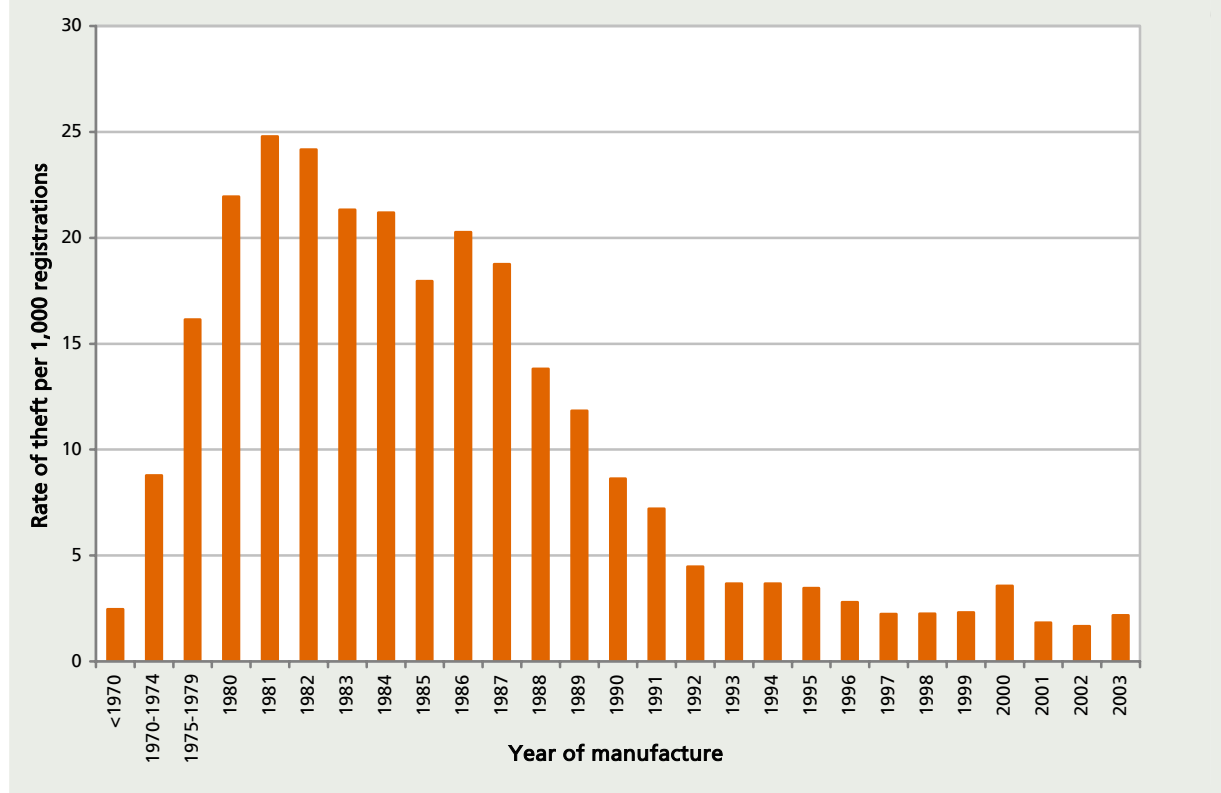
'Recovered' is based on the number of thefts that were recorded stolen during the reporting period and recovered by the end of the reporting period. Rates are based on electronic extracts from each jurisdiction's registration authority as at 31/12/2003. Rates have not been calculated in the following instances: models released in 2004, imported vehicles such as the Nissan Skyline and Nissan Silvia, vehicles that are classified as 'heavy' in most cases (e.g. Hinos and Isuzus) and other vehicles that are not classified in data from Polk Autospec. Also note that some rates may be exaggerated as the vehicle may have ceased or begun manufacture partway through the last 10 years. Less than 10 years old = vehicles manufactured post-1994 for thefts in 2004; post-93 for thefts in 2003.

**Table 5.25 South Australia - Thefts and recoveries by year of manufacture, 2003/2004.**

Year Of Manufacture	Number of thefts	% of thefts	Theft rate per 1,000 registrations	Number of thefts recovered	% of recoveries	% of thefts recovered in the year
<1970	67	0.7	2.47	51	0.6	76.1
1970-1974	214	2.3	8.78	171	2.2	79.9
1975-1979	816	8.8	16.14	706	9.0	86.5
<b>Sub-total 1970s</b>	<b>1,030</b>	<b>11.1</b>	<b>13.74</b>	<b>877</b>	<b>11.2</b>	<b>85.1</b>
1980	343	3.7	21.95	298	3.8	86.9
1981	443	4.8	24.79	404	5.1	91.2
1982	571	6.2	24.16	499	6.3	87.4
1983	535	5.8	21.32	481	6.1	89.9
1984	743	8.0	21.19	650	8.3	87.5
1985	757	8.2	17.95	671	8.5	88.6
1986	643	7.0	20.26	578	7.4	89.9
1987	545	5.9	18.76	466	5.9	85.5
1988	555	6.0	13.82	491	6.2	88.5
1989	509	5.5	11.83	460	5.9	90.4
<b>Sub-total 1980s</b>	<b>5,644</b>	<b>61.0</b>	<b>18.60</b>	<b>4,998</b>	<b>63.6</b>	<b>88.6</b>
1990	422	4.6	8.63	378	4.8	89.6
1991	282	3.0	7.21	252	3.2	89.4
1992	186	2.0	4.47	162	2.1	87.1
1993	155	1.7	3.67	135	1.7	87.1
1994	172	1.9	3.68	136	1.7	79.1
1995	174	1.9	3.46	133	1.7	76.4
1996	137	1.5	2.80	111	1.4	81.0
1997	123	1.3	2.24	96	1.2	78.0
1998	137	1.5	2.25	107	1.4	78.1
1999	127	1.4	2.31	86	1.1	67.7
<b>Sub-total 1990s</b>	<b>1,915</b>	<b>20.7</b>	<b>3.92</b>	<b>1,596</b>	<b>20.3</b>	<b>83.3</b>
2000	197	2.1	3.56	108	1.4	54.8
2001	99	1.1	1.83	72	0.9	72.7
2002	97	1.0	1.67	64	0.8	66.0
2003	119	1.3	2.18	71	0.9	59.7
2004	15	0.2	-	3	0.0	20.0
Unknown	63	0.7	-	22	0.3	34.9
<b>Total</b>	<b>9,246</b>	<b>100.0</b>	<b>8.23</b>	<b>7,862</b>	<b>100.0</b>	<b>85.0</b>

Recovered is based on the number of thefts that were recorded stolen during the reporting period and recovered by the end of the reporting period.

**Figure 5.9 South Australia - Rate of theft and percentage not recovered by year of manufacture, 2003/2004.**





**Table 5.26 South Australia - Thefts and recoveries by year of manufacture and vehicle type, 2003/2004.**

Year Of Manufacture	Number of thefts	% of thefts	Number of thefts recovered	% of recoveries	% of thefts recovered in the year
<b>Motorcycles</b>					
<1970	1	0.3	0	0.0	0.0
1970-1974	3	0.8	2	1.9	66.7
1975-1979	12	3.1	5	4.7	41.7
1980	7	1.8	2	1.9	28.6
1981	3	0.8	1	0.9	33.3
1982	4	1.0	1	0.9	25.0
1983	3	0.8	2	1.9	66.7
1984	6	1.5	2	1.9	33.3
1985	9	2.3	3	2.8	33.3
1986	3	0.8	0	0.0	0.0
1988	2	0.5	0	0.0	0.0
1989	3	0.8	2	1.9	66.7
1990	9	2.3	0	0.0	0.0
1991	9	2.3	5	4.7	55.6
1992	4	1.0	1	0.9	25.0
1993	4	1.0	0	0.0	0.0
1994	6	1.5	1	0.9	16.7
1995	7	1.8	1	0.9	14.3
1996	14	3.6	6	5.7	42.9
1997	14	3.6	9	8.5	64.3
1998	19	4.8	5	4.7	26.3
1999	23	5.9	8	7.5	34.8
2000	96	24.4	25	23.6	26.0
2001	20	5.1	3	2.8	15.0
2002	29	7.4	10	9.4	34.5
2003	33	8.4	3	2.8	9.1
2004	11	2.8	0	0.0	0.0
Unknown	39	9.9	9	8.5	23.1
<b>Total - Motorcycles</b>	<b>393</b>	<b>100.0</b>	<b>106</b>	<b>100.0</b>	<b>27.0</b>
<b>Passenger vehicles</b>					
<1970	66	0.8	51	0.7	77.3
1970-1974	199	2.3	159	2.1	79.9
1975-1979	784	9.0	685	9.0	87.4
1980	327	3.8	288	3.8	88.1
1981	440	5.1	403	5.3	91.6
1982	561	6.5	493	6.4	87.9
1983	527	6.1	474	6.2	89.9
1984	732	8.4	644	8.4	88.0
1985	745	8.6	666	8.7	89.4
1986	633	7.3	574	7.5	90.7
1987	541	6.2	464	6.1	85.8
1988	548	6.3	490	6.4	89.4
1989	497	5.7	451	5.9	90.7
1990	410	4.7	375	4.9	91.5
1991	271	3.1	246	3.2	90.8
1992	178	2.0	158	2.1	88.8
					Continued on the next page

**Table 5.26 South Australia - Thefts and recoveries by year of manufacture and vehicle type, 2003/2004 (Continued).**

Year Of Manufacture	Number of thefts	% of thefts	Number of thefts recovered	% of recoveries	% of thefts recovered in the year
<b>Passenger vehicles - cont.</b>					
1993	149	1.7	133	1.7	89.3
1994	163	1.9	134	1.8	82.2
1995	163	1.9	129	1.7	79.1
1996	119	1.4	102	1.3	85.7
1997	107	1.2	86	1.1	80.4
1998	114	1.3	98	1.3	86.0
1999	98	1.1	74	1.0	75.5
2000	95	1.1	80	1.0	84.2
2001	71	0.8	64	0.8	90.1
2002	61	0.7	51	0.7	83.6
2003	77	0.9	63	0.8	81.8
2004	4	0.0	3	0.0	75.0
Unknown	12	0.1	7	0.1	58.3
<b>Total - Passenger vehicles</b>	<b>8,692</b>	<b>100.0</b>	<b>7,645</b>	<b>100.0</b>	<b>88.0</b>
<b>Other vehicles</b>					
1970-1974	12	7.8	10	9.3	83.3
1975-1979	20	13.1	16	14.8	80.0
1980	9	5.9	8	7.4	88.9
1982	6	3.9	5	4.6	83.3
1983	5	3.3	5	4.6	100.0
1984	5	3.3	4	3.7	80.0
1985	2	1.3	2	1.9	100.0
1986	6	3.9	3	2.8	50.0
1987	4	2.6	2	1.9	50.0
1988	5	3.3	1	0.9	20.0
1989	9	5.9	7	6.5	77.8
1990	3	2.0	3	2.8	100.0
1991	2	1.3	1	0.9	50.0
1992	4	2.6	3	2.8	75.0
1993	2	1.3	2	1.9	100.0
1994	3	2.0	1	0.9	33.3
1995	4	2.6	3	2.8	75.0
1996	3	2.0	3	2.8	100.0
1997	1	0.7	1	0.9	100.0
1998	4	2.6	4	3.7	100.0
1999	6	3.9	4	3.7	66.7
2000	6	3.9	3	2.8	50.0
2001	6	3.9	4	3.7	66.7
2002	6	3.9	3	2.8	50.0
2003	9	5.9	5	4.6	55.6
Unknown	11	7.2	5	4.6	45.5
<b>Total - Other vehicles</b>	<b>153</b>	<b>100.0</b>	<b>108</b>	<b>100.0</b>	<b>70.6</b>

Recovered is based on the number of thefts that were recorded stolen during the reporting period and recovered by the end of the reporting period.

**Table 5.27 South Australia - Motorcycles stolen and subsequently recovered during 2003/2004 by make and year of manufacture.**

Manufacturer	Number of thefts	% of thefts within manufacturer	Number of thefts recovered	% of recoveries within manufacturer	% of thefts recovered in the year
<b>APRILIA</b>					
1999	1	100.0	1	100.0	100.0
<b>BMW</b>					
2000	1	100.0	1	100.0	100.0
<b>BOLWELL</b>					
1999	1	25.0	0	0.0	0.0
2000	1	25.0	0	0.0	0.0
2001	2	50.0	1	100.0	50.0
<b>CUSTOM MADE</b>					
2000	1	50.0	0	0.0	0.0
Unknown	1	50.0	0	0.0	0.0
<b>DUCATI</b>					
1991	1	50.0	1	50.0	100.0
2002	1	50.0	1	50.0	100.0
<b>HARLEY DAVIDSON</b>					
1975-1979	1	33.3	0	0.0	0.0
2000	2	66.7	1	100.0	50.0
<b>HONDA</b>					
1970-1974	2	1.8	1	4.2	50.0
1975-1979	5	4.5	3	12.5	60.0
1981	1	0.9	0	0.0	0.0
1982	3	2.7	0	0.0	0.0
1983	1	0.9	1	4.2	100.0
1984	2	1.8	0	0.0	0.0
1985	2	1.8	0	0.0	0.0
1986	1	0.9	0	0.0	0.0
1989	1	0.9	0	0.0	0.0
1990	6	5.4	0	0.0	0.0
1991	1	0.9	1	4.2	100.0
1992	1	0.9	0	0.0	0.0
1993	3	2.7	0	0.0	0.0
1994	3	2.7	0	0.0	0.0
1995	1	0.9	1	4.2	100.0
1996	6	5.4	2	8.3	33.3
1997	6	5.4	3	12.5	50.0
1998	4	3.6	0	0.0	0.0
1999	6	5.4	2	8.3	33.3
2000	25	22.3	5	20.8	20.0
2001	2	1.8	0	0.0	0.0
2002	8	7.1	1	4.2	12.5
2003	5	4.5	0	0.0	0.0
2004	2	1.8	0	0.0	0.0
Unknown	15	13.4	4	16.7	26.7

Continued on the next page

**Table 5.27 South Australia - Motorcycles stolen and subsequently recovered during 2003/2004 by make and year of manufacture (Continued).**

Manufacturer	Number of thefts	% of thefts within manufacturer	Number of thefts recovered	% of recoveries within manufacturer	% of thefts recovered in the year
<b>KAWASAKI</b>					
1975-1979	2	4.5	0	0.0	0.0
1984	1	2.3	0	0.0	0.0
1985	3	6.8	2	15.4	66.7
1990	1	2.3	0	0.0	0.0
1991	2	4.5	1	7.7	50.0
1992	1	2.3	1	7.7	100.0
1994	1	2.3	0	0.0	0.0
1996	3	6.8	2	15.4	66.7
1997	2	4.5	0	0.0	0.0
1998	4	9.1	0	0.0	0.0
1999	1	2.3	0	0.0	0.0
2000	10	22.7	1	7.7	10.0
2001	1	2.3	1	7.7	100.0
2002	4	9.1	2	15.4	50.0
2004	1	2.3	0	0.0	0.0
Unknown	7	15.9	3	23.1	42.9
<b>KTM</b>					
1997	1	10.0	1	100.0	100.0
1999	2	20.0	0	0.0	0.0
2000	1	10.0	0	0.0	0.0
2001	1	10.0	0	0.0	0.0
2003	4	40.0	0	0.0	0.0
Unknown	1	10.0	0	0.0	0.0
<b>MALAGUTI</b>					
2000	1	100.0	0	0.0	0.0
<b>MOTOGUZZI</b>					
2000	1	100.0	1	100.0	100.0
<b>SUZUKI</b>					
1980	2	5.3	1	5.9	50.0
1981	2	5.3	1	5.9	50.0
1983	1	2.6	1	5.9	100.0
1984	2	5.3	1	5.9	50.0
1985	1	2.6	1	5.9	100.0
1988	1	2.6	0	0.0	0.0
1991	1	2.6	1	5.9	100.0
1995	2	5.3	0	0.0	0.0
1996	3	7.9	1	5.9	33.3
1997	2	5.3	2	11.8	100.0
1998	4	10.5	1	5.9	25.0
1999	4	10.5	4	23.5	100.0
2000	6	15.8	1	5.9	16.7
2001	1	2.6	0	0.0	0.0
2003	5	13.2	2	11.8	40.0
Unknown	1	2.6	0	0.0	0.0

Continued on the next page

**Table 5.27 South Australia - Motorcycles stolen and subsequently recovered during 2003/2004 by make and year of manufacture (Continued).**

Manufacturer	Number of thefts	% of thefts within manufacturer	Number of thefts recovered	% of recoveries within manufacturer	% of thefts recovered in the year
<b>TGB</b>					
2003	1	100.0	0	0.0	0.0
<b>TRIUMPH</b>					
1975-1979	2	100.0	1	100.0	50.0
<b>VESPA</b>					
1998	1	33.3	0	0.0	0.0
2001	1	33.3	0	0.0	0.0
2003	1	33.3	0	0.0	0.0
<b>YAMAHA</b>					
1970-1974	1	0.7	1	2.4	100.0
1975-1979	2	1.4	1	2.4	50.0
1980	5	3.4	1	2.4	20.0
1982	1	0.7	1	2.4	100.0
1983	1	0.7	0	0.0	0.0
1984	1	0.7	1	2.4	100.0
1985	3	2.1	0	0.0	0.0
1986	2	1.4	0	0.0	0.0
1988	1	0.7	0	0.0	0.0
1989	2	1.4	2	4.8	100.0
1990	2	1.4	0	0.0	0.0
1991	4	2.7	1	2.4	25.0
1992	2	1.4	0	0.0	0.0
1993	1	0.7	0	0.0	0.0
1994	2	1.4	1	2.4	50.0
1995	4	2.7	0	0.0	0.0
1996	2	1.4	1	2.4	50.0
1997	3	2.1	3	7.1	100.0
1998	6	4.1	4	9.5	66.7
1999	6	4.1	1	2.4	16.7
2000	42	28.8	15	35.7	35.7
2001	10	6.8	1	2.4	10.0
2002	13	8.9	5	11.9	38.5
2003	10	6.8	1	2.4	10.0
2004	8	5.5	0	0.0	0.0
Unknown	12	8.2	2	4.8	16.7
<b>UNKNOWN</b>					
<1970	1	4.5	0	0.0	0.0
1999	2	9.1	0	0.0	0.0
2000	5	22.7	0	0.0	0.0
2001	2	9.1	0	0.0	0.0
2002	3	13.6	1	100.0	33.3
2003	7	31.8	0	0.0	0.0
Unknown	2	9.1	0	0.0	0.0

Recovered is based on the number of thefts that were recorded stolen during the reporting period and recovered by the end of the reporting period.

**Table 5.28 South Australia - Passenger vehicles stolen and subsequently recovered during 2003/2004 by make and year of manufacture.**

Manufacturer	Number of thefts	% of thefts within manufacturer	Number of thefts recovered	% of recoveries within manufacturer	% of thefts recovered in the year
<b>ALFA ROMEO</b>					
1980	1	8.3	1	10.0	100.0
1983	1	8.3	1	10.0	100.0
1984	1	8.3	0	0.0	0.0
1985	1	8.3	1	10.0	100.0
1986	1	8.3	1	10.0	100.0
1987	1	8.3	1	10.0	100.0
1988	2	16.7	2	20.0	100.0
1989	1	8.3	1	10.0	100.0
1990	1	8.3	1	10.0	100.0
1991	1	8.3	0	0.0	0.0
2001	1	8.3	1	10.0	100.0
<b>AUDI</b>					
1975-1979	2	66.7	2	100.0	100.0
1992	1	33.3	0	0.0	0.0
<b>AUSTIN</b>					
<1970	1	100.0	0	0.0	0.0
<b>BEDFORD</b>					
1975-1979	1	100.0	1	100.0	100.0
<b>BMW</b>					
1975-1979	3	10.7	2	10.0	66.7
1983	1	3.6	1	5.0	100.0
1984	1	3.6	1	5.0	100.0
1985	4	14.3	3	15.0	75.0
1986	1	3.6	0	0.0	0.0
1987	1	3.6	1	5.0	100.0
1988	2	7.1	1	5.0	50.0
1991	1	3.6	1	5.0	100.0
1992	2	7.1	2	10.0	100.0
1994	6	21.4	4	20.0	66.7
1996	2	7.1	1	5.0	50.0
1997	1	3.6	1	5.0	100.0
1999	2	7.1	1	5.0	50.0
2003	1	3.6	1	5.0	100.0
<b>CHEVROLET</b>					
1987	1	100.0	1	100.0	100.0
<b>CHRYSLER</b>					
<1970	3	6.1	2	4.7	66.7
1970-1974	13	26.5	11	25.6	84.6
1975-1979	28	57.1	25	58.1	89.3
1980	4	8.2	4	9.3	100.0
2003	1	2.0	1	2.3	100.0

Continued on the next page

**Table 5.28 South Australia - Passenger vehicles stolen and subsequently recovered during 2003/2004 by make and year of manufacture (Continued).**

Manufacturer	Number of thefts	% of thefts within manufacturer	Number of thefts recovered	% of recoveries within manufacturer	% of thefts recovered in the year
<b>DAEWOO</b>					
1994	1	4.5	1	5.3	100.0
1995	4	18.2	4	21.1	100.0
1996	5	22.7	4	21.1	80.0
1997	3	13.6	2	10.5	66.7
1998	4	18.2	3	15.8	75.0
1999	2	9.1	2	10.5	100.0
2000	2	9.1	2	10.5	100.0
2002	1	4.5	1	5.3	100.0
<b>DAIHATSU</b>					
1980	1	3.3	0	0.0	0.0
1982	1	3.3	1	3.8	100.0
1983	1	3.3	1	3.8	100.0
1984	4	13.3	4	15.4	100.0
1985	1	3.3	1	3.8	100.0
1988	2	6.7	1	3.8	50.0
1990	2	6.7	2	7.7	100.0
1991	5	16.7	5	19.2	100.0
1992	1	3.3	1	3.8	100.0
1993	3	10.0	3	11.5	100.0
1994	1	3.3	1	3.8	100.0
1996	2	6.7	0	0.0	0.0
1997	3	10.0	3	11.5	100.0
1998	1	3.3	1	3.8	100.0
1999	1	3.3	1	3.8	100.0
2001	1	3.3	1	3.8	100.0
<b>DODGE</b>					
<1970	1	100.0	1	100.0	100.0
<b>FIAT</b>					
1970-1974	1	100.0	1	100.0	100.0
<b>FORD</b>					
<1970	8	0.4	6	0.3	75.0
1970-1974	24	1.2	15	0.9	62.5
1975-1979	78	3.9	63	3.6	80.8
1980	29	1.4	21	1.2	72.4
1981	97	4.8	91	5.3	93.8
1982	145	7.2	130	7.5	89.7
1983	148	7.4	128	7.4	86.5
1984	191	9.5	161	9.3	84.3
1985	221	11.0	195	11.3	88.2
1986	175	8.7	157	9.1	89.7
1987	168	8.4	140	8.1	83.3
1988	165	8.2	149	8.6	90.3
1989	170	8.5	151	8.7	88.8

Continued on the next page

**Table 5.28 South Australia - Passenger vehicles stolen and subsequently recovered during 2003/2004 by make and year of manufacture (Continued).**

Manufacturer	Number of thefts	% of thefts within manufacturer	Number of thefts recovered	% of recoveries within manufacturer	% of thefts recovered in the year
<b>FORD - cont.</b>					
1990	86	4.3	74	4.3	86.0
1991	41	2.0	33	1.9	80.5
1992	27	1.3	24	1.4	88.9
1993	29	1.4	25	1.4	86.2
1994	30	1.5	24	1.4	80.0
1995	28	1.4	21	1.2	75.0
1996	28	1.4	25	1.4	89.3
1997	15	0.7	11	0.6	73.3
1998	22	1.1	19	1.1	86.4
1999	17	0.8	15	0.9	88.2
2000	20	1.0	16	0.9	80.0
2001	14	0.7	13	0.8	92.9
2002	9	0.4	9	0.5	100.0
2003	12	0.6	11	0.6	91.7
Unknown	5	0.2	2	0.1	40.0
<b>HILLMAN</b>					
1970-1974	1	100.0	0	0.0	0.0
<b>HOLDEN</b>					
<1970	28	0.8	22	0.7	78.6
1970-1974	83	2.4	65	2.1	78.3
1975-1979	386	11.1	336	11.0	87.0
1980	172	5.0	151	5.0	87.8
1981	182	5.2	163	5.4	89.6
1982	217	6.3	184	6.0	84.8
1983	145	4.2	130	4.3	89.7
1984	253	7.3	224	7.4	88.5
1985	264	7.6	230	7.6	87.1
1986	263	7.6	242	8.0	92.0
1987	248	7.1	217	7.1	87.5
1988	213	6.1	191	6.3	89.7
1989	186	5.4	171	5.6	91.9
1990	181	5.2	169	5.6	93.4
1991	118	3.4	109	3.6	92.4
1992	72	2.1	64	2.1	88.9
1993	52	1.5	47	1.5	90.4
1994	76	2.2	64	2.1	84.2
1995	69	2.0	52	1.7	75.4
1996	43	1.2	39	1.3	90.7
1997	41	1.2	30	1.0	73.2
1998	43	1.2	39	1.3	90.7
1999	32	0.9	23	0.8	71.9
2000	20	0.6	15	0.5	75.0
2001	28	0.8	24	0.8	85.7
2002	22	0.6	17	0.6	77.3
2003	30	0.9	24	0.8	80.0
Unknown	2	0.1	1	0.0	50.0

Continued on the next page



**Table 5.28 South Australia - Passenger vehicles stolen and subsequently recovered during 2003/2004 by make and year of manufacture (Continued).**

Manufacturer	Number of thefts	% of thefts within manufacturer	Number of thefts recovered	% of recoveries within manufacturer	% of thefts recovered in the year
<b>HONDA</b>					
1975-1979	10	13.0	9	12.2	90.0
1980	1	1.3	1	1.4	100.0
1981	3	3.9	3	4.1	100.0
1982	6	7.8	6	8.1	100.0
1983	3	3.9	3	4.1	100.0
1984	8	10.4	8	10.8	100.0
1985	5	6.5	4	5.4	80.0
1986	3	3.9	3	4.1	100.0
1988	6	7.8	6	8.1	100.0
1989	5	6.5	5	6.8	100.0
1990	2	2.6	2	2.7	100.0
1991	4	5.2	4	5.4	100.0
1992	2	2.6	2	2.7	100.0
1993	6	7.8	6	8.1	100.0
1994	3	3.9	2	2.7	66.7
1995	1	1.3	1	1.4	100.0
1996	1	1.3	1	1.4	100.0
1997	1	1.3	1	1.4	100.0
2000	3	3.9	3	4.1	100.0
2001	2	2.6	2	2.7	100.0
2003	1	1.3	1	1.4	100.0
2004	1	1.3	1	1.4	100.0
<b>HSV</b>					
1996	1	11.1	1	25.0	100.0
1997	2	22.2	0	0.0	0.0
1998	1	11.1	0	0.0	0.0
1999	1	11.1	1	25.0	100.0
2001	2	22.2	1	25.0	50.0
2003	2	22.2	1	25.0	50.0
<b>HYUNDAI</b>					
1987	6	7.7	5	7.4	83.3
1988	2	2.6	2	2.9	100.0
1989	1	1.3	1	1.5	100.0
1990	6	7.7	5	7.4	83.3
1991	3	3.8	3	4.4	100.0
1992	3	3.8	2	2.9	66.7
1993	2	2.6	2	2.9	100.0
1994	4	5.1	4	5.9	100.0
1995	7	9.0	5	7.4	71.4
1996	7	9.0	7	10.3	100.0
1997	10	12.8	10	14.7	100.0
1998	10	12.8	8	11.8	80.0
1999	4	5.1	3	4.4	75.0
2000	8	10.3	7	10.3	87.5
2001	1	1.3	1	1.5	100.0
2002	2	2.6	1	1.5	50.0
2003	2	2.6	2	2.9	100.0

Continued on the next page

**Table 5.28 South Australia - Passenger vehicles stolen and subsequently recovered during 2003/2004 by make and year of manufacture (Continued).**

Manufacturer	Number of thefts	% of thefts within manufacturer	Number of thefts recovered	% of recoveries within manufacturer	% of thefts recovered in the year
<b>ISUZU</b>					
<1970	2	50.0	2	66.7	100.0
1983	1	25.0	1	33.3	100.0
1997	1	25.0	0	0.0	0.0
<b>JAGUAR</b>					
1970-1974	2	25.0	2	28.6	100.0
1975-1979	2	25.0	1	14.3	50.0
1980	1	12.5	1	14.3	100.0
1981	1	12.5	1	14.3	100.0
1983	1	12.5	1	14.3	100.0
1987	1	12.5	1	14.3	100.0
<b>JEEP</b>					
1994	1	20.0	1	20.0	100.0
1995	2	40.0	2	40.0	100.0
2001	1	20.0	1	20.0	100.0
2002	1	20.0	1	20.0	100.0
<b>KIA</b>					
1999	1	12.5	0	0.0	0.0
2000	1	12.5	1	14.3	100.0
2001	2	25.0	2	28.6	100.0
2002	3	37.5	3	42.9	100.0
2004	1	12.5	1	14.3	100.0
<b>LAND ROVER</b>					
1994	2	33.3	1	25.0	50.0
1996	1	16.7	0	0.0	0.0
1998	2	33.3	2	50.0	100.0
2001	1	16.7	1	25.0	100.0
<b>LEXUS</b>					
1999	1	100.0	1	100.0	100.0
<b>LEYLAND</b>					
<1970	1	25.0	0	0.0	0.0
1970-1974	1	25.0	1	33.3	100.0
1975-1979	1	25.0	1	33.3	100.0
1980	1	25.0	1	33.3	100.0
<b>MAZDA</b>					
<1970	2	0.5	2	0.5	100.0
1970-1974	8	1.9	4	1.0	50.0
1975-1979	38	9.2	34	8.9	89.5
1980	45	10.9	42	11.0	93.3
1981	48	11.7	45	11.8	93.8
1982	26	6.3	23	6.0	88.5
1983	36	8.8	36	9.4	100.0

Continued on the next page

**Table 5.28 South Australia - Passenger vehicles stolen and subsequently recovered during 2003/2004 by make and year of manufacture (Continued).**

Manufacturer	Number of thefts	% of thefts within manufacturer	Number of thefts recovered	% of recoveries within manufacturer	% of thefts recovered in the year
<b>MAZDA - cont.</b>					
1984	43	10.5	40	10.5	93.0
1985	36	8.8	34	8.9	94.4
1986	11	2.7	9	2.4	81.8
1987	15	3.6	15	3.9	100.0
1988	12	2.9	12	3.1	100.0
1989	18	4.4	18	4.7	100.0
1990	15	3.6	14	3.7	93.3
1991	15	3.6	14	3.7	93.3
1992	9	2.2	8	2.1	88.9
1993	10	2.4	9	2.4	90.0
1994	4	1.0	3	0.8	75.0
1995	6	1.5	6	1.6	100.0
1996	5	1.2	5	1.3	100.0
1998	4	1.0	4	1.0	100.0
1999	1	0.2	1	0.3	100.0
2000	1	0.2	1	0.3	100.0
2001	1	0.2	1	0.3	100.0
2003	1	0.2	0	0.0	0.0
2004	1	0.2	1	0.3	100.0
<b>MERCEDES-BENZ</b>					
1970-1974	4	14.3	4	19.0	100.0
1975-1979	8	28.6	5	23.8	62.5
1982	3	10.7	3	14.3	100.0
1983	2	7.1	2	9.5	100.0
1984	1	3.6	1	4.8	100.0
1985	2	7.1	0	0.0	0.0
1987	1	3.6	1	4.8	100.0
1989	1	3.6	0	0.0	0.0
1990	1	3.6	1	4.8	100.0
1994	1	3.6	0	0.0	0.0
1995	1	3.6	1	4.8	100.0
1998	1	3.6	1	4.8	100.0
1999	1	3.6	1	4.8	100.0
2000	1	3.6	1	4.8	100.0
<b>MG</b>					
<1970	1	50.0	1	50.0	100.0
1970-1974	1	50.0	1	50.0	100.0
<b>MITSUBISHI</b>					
1970-1974	1	0.2	1	0.2	100.0
1975-1979	25	4.0	19	3.5	76.0
1980	19	3.0	16	3.0	84.2
1981	34	5.5	31	5.8	91.2
1982	46	7.4	40	7.4	87.0
1983	35	5.6	31	5.8	88.6
1984	47	7.5	40	7.4	85.1

Continued on the next page

**Table 5.28 South Australia - Passenger vehicles stolen and subsequently recovered during 2003/2004 by make and year of manufacture (Continued).**

Manufacturer	Number of thefts	% of thefts within manufacturer	Number of thefts recovered	% of recoveries within manufacturer	% of thefts recovered in the year
<b>MITSUBISHI - cont.</b>					
1985	52	8.3	49	9.1	94.2
1986	43	6.9	36	6.7	83.7
1987	39	6.3	31	5.8	79.5
1988	43	6.9	36	6.7	83.7
1989	27	4.3	24	4.5	88.9
1990	34	5.5	31	5.8	91.2
1991	24	3.9	23	4.3	95.8
1992	29	4.7	26	4.8	89.7
1993	22	3.5	18	3.3	81.8
1994	11	1.8	8	1.5	72.7
1995	15	2.4	12	2.2	80.0
1996	11	1.8	10	1.9	90.9
1997	16	2.6	15	2.8	93.8
1998	7	1.1	6	1.1	85.7
1999	7	1.1	6	1.1	85.7
2000	11	1.8	11	2.0	100.0
2001	6	1.0	6	1.1	100.0
2002	6	1.0	4	0.7	66.7
2003	12	1.9	9	1.7	75.0
2004	1	0.2	0	0.0	0.0
<b>MORRIS</b>					
<1970	5	50.0	4	44.4	80.0
1970-1974	5	50.0	5	55.6	100.0
<b>N237</b>					
1981	1	100.0	0	0.0	0.0
<b>NISSAN</b>					
<1970	1	0.2	1	0.2	100.0
1970-1974	8	1.7	7	1.7	87.5
1975-1979	20	4.2	15	3.5	75.0
1980	9	1.9	7	1.7	77.8
1981	22	4.6	20	4.7	90.9
1982	35	7.3	29	6.9	82.9
1983	43	9.0	40	9.5	93.0
1984	40	8.3	33	7.8	82.5
1985	44	9.2	41	9.7	93.2
1986	37	7.7	33	7.8	89.2
1987	17	3.5	15	3.5	88.2
1988	40	8.3	36	8.5	90.0
1989	33	6.9	29	6.9	87.9
1990	40	8.3	37	8.7	92.5
1991	26	5.4	23	5.4	88.5
1992	13	2.7	12	2.8	92.3
1993	9	1.9	9	2.1	100.0
1994	8	1.7	8	1.9	100.0

Continued on the next page

**Table 5.28 South Australia - Passenger vehicles stolen and subsequently recovered during 2003/2004 by make and year of manufacture (Continued).**

Manufacturer	Number of thefts	% of thefts within manufacturer	Number of thefts recovered	% of recoveries within manufacturer	% of thefts recovered in the year
<b>NISSAN - cont.</b>					
1995	3	0.6	2	0.5	66.7
1996	5	1.0	4	0.9	80.0
1997	3	0.6	3	0.7	100.0
1998	5	1.0	5	1.2	100.0
1999	4	0.8	3	0.7	75.0
2000	6	1.2	4	0.9	66.7
2001	2	0.4	1	0.2	50.0
2002	5	1.0	4	0.9	80.0
2003	2	0.4	2	0.5	100.0
<b>PEUGEOT</b>					
1987	1	25.0	0	0.0	0.0
1995	2	50.0	1	50.0	50.0
2003	1	25.0	1	50.0	100.0
<b>PONTIAC</b>					
<1970	1	100.0	1	100.0	100.0
<b>PORSCHE</b>					
1975-1979	3	75.0	3	75.0	100.0
1987	1	25.0	1	25.0	100.0
<b>PROTON</b>					
1995	2	50.0	1	33.3	50.0
1999	1	25.0	1	33.3	100.0
2000	1	25.0	1	33.3	100.0
<b>RANGE ROVER</b>					
1988	1	50.0	1	100.0	100.0
1990	1	50.0	0	0.0	0.0
<b>RENAULT</b>					
<1970	1	33.3	1	33.3	100.0
1970-1974	1	33.3	1	33.3	100.0
1984	1	33.3	1	33.3	100.0
<b>ROLLS-ROYCE</b>					
1970-1974	1	100.0	1	100.0	100.0
<b>ROVER</b>					
1975-1979	1	20.0	1	20.0	100.0
1984	1	20.0	1	20.0	100.0
1985	2	40.0	2	40.0	100.0
1986	1	20.0	1	20.0	100.0
<b>SAAB</b>					
1984	2	40.0	2	40.0	100.0
1986	2	40.0	2	40.0	100.0
1992	1	20.0	1	20.0	100.0

Continued on the next page

**Table 5.28 South Australia - Passenger vehicles stolen and subsequently recovered during 2003/2004 by make and year of manufacture (Continued).**

Manufacturer	Number of thefts	% of thefts within manufacturer	Number of thefts recovered	% of recoveries within manufacturer	% of thefts recovered in the year
<b>SUBARU</b>					
1980	1	0.9	1	1.1	100.0
1982	14	13.0	13	13.7	92.9
1983	11	10.2	9	9.5	81.8
1984	13	12.0	12	12.6	92.3
1985	7	6.5	7	7.4	100.0
1987	3	2.8	2	2.1	66.7
1988	2	1.9	2	2.1	100.0
1989	3	2.8	3	3.2	100.0
1990	10	9.3	9	9.5	90.0
1991	7	6.5	6	6.3	85.7
1992	6	5.6	6	6.3	100.0
1993	2	1.9	2	2.1	100.0
1994	3	2.8	3	3.2	100.0
1995	2	1.9	1	1.1	50.0
1996	1	0.9	1	1.1	100.0
1997	2	1.9	2	2.1	100.0
1998	3	2.8	2	2.1	66.7
1999	9	8.3	6	6.3	66.7
2000	4	3.7	3	3.2	75.0
2001	2	1.9	2	2.1	100.0
2003	2	1.9	2	2.1	100.0
Unknown	1	0.9	1	1.1	100.0
<b>SUZUKI</b>					
1980	1	3.0	1	3.2	100.0
1982	1	3.0	1	3.2	100.0
1983	3	9.1	3	9.7	100.0
1984	3	9.1	3	9.7	100.0
1985	1	3.0	1	3.2	100.0
1986	1	3.0	0	0.0	0.0
1988	2	6.1	2	6.5	100.0
1989	1	3.0	1	3.2	100.0
1990	1	3.0	1	3.2	100.0
1991	2	6.1	2	6.5	100.0
1992	2	6.1	2	6.5	100.0
1993	2	6.1	2	6.5	100.0
1994	3	9.1	3	9.7	100.0
1995	2	6.1	2	6.5	100.0
1997	2	6.1	1	3.2	50.0
1998	2	6.1	2	6.5	100.0
1999	1	3.0	1	3.2	100.0
2000	1	3.0	1	3.2	100.0
2002	2	6.1	2	6.5	100.0
<b>TATA</b>					
1999	1	100.0	0	0.0	0.0

Continued on the next page

**Table 5.28 South Australia - Passenger vehicles stolen and subsequently recovered during 2003/2004 by make and year of manufacture (Continued).**

Manufacturer	Number of thefts	% of thefts within manufacturer	Number of thefts recovered	% of recoveries within manufacturer	% of thefts recovered in the year
<b>TOYOTA</b>					
<1970	5	0.4	3	0.3	60.0
1970-1974	42	3.8	39	3.8	92.9
1975-1979	172	15.4	163	15.9	94.8
1980	41	3.7	40	3.9	97.6
1981	51	4.6	48	4.7	94.1
1982	67	6.0	63	6.1	94.0
1983	96	8.6	87	8.5	90.6
1984	122	10.9	112	10.9	91.8
1985	104	9.3	97	9.5	93.3
1986	95	8.5	90	8.8	94.7
1987	38	3.4	33	3.2	86.8
1988	55	4.9	48	4.7	87.3
1989	50	4.5	46	4.5	92.0
1990	30	2.7	29	2.8	96.7
1991	24	2.2	23	2.2	95.8
1992	10	0.9	8	0.8	80.0
1993	11	1.0	9	0.9	81.8
1994	8	0.7	7	0.7	87.5
1995	19	1.7	18	1.8	94.7
1996	7	0.6	4	0.4	57.1
1997	7	0.6	7	0.7	100.0
1998	9	0.8	6	0.6	66.7
1999	11	1.0	8	0.8	72.7
2000	16	1.4	14	1.4	87.5
2001	7	0.6	7	0.7	100.0
2002	8	0.7	8	0.8	100.0
2003	8	0.7	7	0.7	87.5
Unknown	3	0.3	2	0.2	66.7
<b>TRIUMPH</b>					
<1970	1	100.0	1	100.0	100.0
<b>VOLKSWAGEN</b>					
<1970	5	45.5	4	57.1	80.0
1970-1974	3	27.3	1	14.3	33.3
1975-1979	2	18.2	1	14.3	50.0
2002	1	9.1	1	14.3	100.0
<b>VOLVO</b>					
1975-1979	4	33.3	4	36.4	100.0
1980	1	8.3	1	9.1	100.0
1981	1	8.3	1	9.1	100.0
1984	1	8.3	1	9.1	100.0
1985	1	8.3	1	9.1	100.0
1988	1	8.3	1	9.1	100.0
1989	1	8.3	1	9.1	100.0

Continued on the next page

**Table 5.28 South Australia - Passenger vehicles stolen and subsequently recovered during 2003/2004 by make and year of manufacture (Continued).**

Manufacturer	Number of thefts	% of thefts within manufacturer	Number of thefts recovered	% of recoveries within manufacturer	% of thefts recovered in the year
<b>VOLVO - cont.</b>					
1993	1	8.3	1	9.1	100.0
1994	1	8.3	0	0.0	0.0
<b>UNKNOWN MAKE</b>					
1999	1	20.0	0	0.0	0.0
2002	1	20.0	0	0.0	0.0
2003	2	40.0	1	50.0	50.0
Unknown	1	20.0	1	50.0	100.0

Recovered is based on the number of thefts that were recorded stolen during the reporting period and recovered by the end of the reporting period.

**Table 5.29 South Australia - Thefts and recoveries by fuel type, 2003/2004.**

Fuel type	Number of thefts	% of thefts	Number of thefts recovered	% of recoveries	% of thefts recovered in the year
DIESEL	183	2.0	148	1.9	80.9
ELECTRIC	4	0.0	2	0.0	50.0
GAS	173	1.9	143	1.8	82.7
KEROSENE	1	0.0	1	0.0	100.0
PETROL	8,418	91.0	7,198	91.6	85.5
PETROL & GAS	423	4.6	346	4.4	81.8
UNPOWERED	6	0.1	0	0.0	0.0
UNKNOWN	38	0.4	24	0.3	63.2
<b>Total</b>	<b>9,246</b>	<b>100.0</b>	<b>7,862</b>	<b>100.0</b>	<b>85.0</b>

Recovered is based on the number of thefts that were recorded stolen during the reporting period and recovered by the end of the reporting period.

**Table 5.30 South Australia - Thefts and recoveries by transmission type, 2003/2004.**

Transmission	Number of thefts	% of thefts	Number of thefts recovered	% of recoveries	% of thefts recovered in the year
AUTOMATIC	3,406	36.8	2,949	37.5	86.6
MANUAL	2,200	23.8	1,939	24.7	88.1
UNKNOWN	3,640	39.4	2,974	37.8	81.7
<b>Total</b>	<b>9,246</b>	<b>100.0</b>	<b>7,862</b>	<b>100.0</b>	<b>85.0</b>

Recovered is based on the number of thefts that were recorded stolen during the reporting period and recovered by the end of the reporting period.



**Table 5.31 South Australia - Thefts and recoveries by number of cylinders (passenger vehicles), 2003/2004.**

Number of cylinders	Number of thefts	% of thefts	Number of thefts recovered	% of recoveries	% of thefts recovered in the year
< 4	22	0.3	19	0.2	86.4
4	3,340	38.4	3,035	39.7	90.9
5	8	0.1	6	0.1	75.0
6	3,518	40.5	3,153	41.2	89.6
8	408	4.7	297	3.9	72.8
Unknown	1,396	16.1	1,135	14.8	81.3
<b>Total</b>	<b>8,692</b>	<b>100.0</b>	<b>7,645</b>	<b>100.0</b>	<b>88.0</b>

Recovered is based on the number of thefts that were recorded stolen during the reporting period and recovered by the end of the reporting period.

**Table 5.32 South Australia - Number of vehicles recovered with damage by year of manufacture, 2003/2004.**

Year Of Manufacture	Number recovered	Number recovered with damage	% of vehicles recovered with damage
<1970	51	15	29.4
1970-1974	171	72	42.1
1975-1979	706	285	40.4
<b>Subtotal - 1970s</b>	<b>877</b>	<b>357</b>	<b>40.7</b>
1980	298	127	42.6
1981	404	192	47.5
1982	499	242	48.5
1983	481	233	48.4
1984	650	330	50.8
1985	671	352	52.5
1986	578	297	51.4
1987	466	268	57.5
1988	491	294	59.9
1989	460	321	69.8
<b>Subtotal - 1980s</b>	<b>4,998</b>	<b>2,656</b>	<b>53.1</b>
1990	378	252	66.7
1991	252	188	74.6
1992	162	110	67.9
1993	135	91	67.4
1994	136	91	66.9
1995	133	92	69.2
1996	111	75	67.6
1997	96	56	58.3
1998	107	67	62.6
1999	86	49	57.0
<b>Subtotal - 1990s</b>	<b>1,596</b>	<b>1,071</b>	<b>67.1</b>
2000	108	54	50.0
2001	72	36	50.0
2002	64	31	48.4
2003	71	38	53.5
2004	3	0	0.0
Unknown	22	8	36.4
<b>Total</b>	<b>7,862</b>	<b>4,266</b>	<b>54.3</b>

Recovered is based on the number of thefts that were recorded stolen during the reporting period and recovered by the end of the reporting period.

**Table 5.33 South Australia - Parts missing from recovered vehicles, 2003/2004.**

	Number recovered	% of vehicles recovered
<b>Passenger vehicles</b>		
Sound equipment	584	7.6
Number plate	360	4.7
Wheels	273	3.6
Trim	50	0.7
Mechanical parts	51	0.7
Accessories	24	0.3
Panels	51	0.7
Personal effects	20	0.3
Engine	16	0.2
Engine No. tampered/damaged/removed	7	0.1
VIN tampered/damaged/removed	9	0.1
Chassis No. tampered/damaged/removed	5	0.1
<b>All vehicles</b>		
Sound equipment	584	7.4
Number plate	374	4.8
Wheels	273	3.5
Trim	50	0.6
Mechanical parts	52	0.7
Accessories	24	0.3
Panels	51	0.6
Personal effects	21	0.3
Engine	16	0.2
Engine No. tampered/damaged/removed	7	0.1
VIN tampered/damaged/removed	9	0.1
Chassis No. tampered/damaged/removed	5	0.1

Recovered is based on the number of thefts that were recorded stolen during the reporting period and recovered by the end of the reporting period.

**Table 5.34a South Australia - Thefts and recoveries by estimated value of the vehicle, 2003/2004 - Motorcycles.**

Estimated value	Number of thefts	% of thefts	Number of thefts recovered	% of recoveries	% of thefts recovered in the year
\$500 or less	47	12.0	16	15.1	34.0
\$501-\$1,000	53	13.5	11	10.4	20.8
\$1,001-\$2,000	67	17.0	20	18.9	29.9
\$2,001-\$3,000	51	13.0	10	9.4	19.6
\$3,001-\$4,000	25	6.4	6	5.7	24.0
\$4,001-\$5,000	36	9.2	8	7.5	22.2
<b>Subtotal - \$5,000 or less</b>	<b>279</b>	<b>71.0</b>	<b>71</b>	<b>67.0</b>	<b>25.4</b>
\$5,001-\$6,000	29	7.4	7	6.6	24.1
\$6,001-\$7,000	16	4.1	7	6.6	43.8
\$7,001-\$8,000	20	5.1	8	7.5	40.0
\$8,001-\$9,000	11	2.8	1	0.9	9.1
\$9,001-\$10,000	14	3.6	4	3.8	28.6
<b>Subtotal - \$5,001-\$10,000</b>	<b>90</b>	<b>22.9</b>	<b>27</b>	<b>25.5</b>	<b>30.0</b>
\$10,001-\$15,000	14	3.6	3	2.8	21.4
\$15,001-\$20,000	9	2.3	4	3.8	44.4
<b>Subtotal - \$10,001-\$20,000</b>	<b>23</b>	<b>5.9</b>	<b>7</b>	<b>6.6</b>	<b>30.4</b>
\$20,001-\$25,000	0	0.0	0	0.0	0.0
\$25,001-\$30,000	0	0.0	0	0.0	0.0
<b>Subtotal - \$20,001-\$30,000</b>	<b>0</b>	<b>0.0</b>	<b>0</b>	<b>0.0</b>	<b>0.0</b>
\$30,001-\$40,000	0	0.0	0	0.0	0.0
\$40,001-\$50,000	0	0.0	0	0.0	0.0
\$50,001-\$75,000	0	0.0	0	0.0	0.0
\$75,001+	1	0.3	1	0.9	100.0
<b>Subtotal - \$30,001 or more</b>	<b>1</b>	<b>0.3</b>	<b>1</b>	<b>0.9</b>	<b>100.0</b>
Unknown	0	0.0	0	0.0	0.0
<b>Total</b>	<b>393</b>	<b>100.0</b>	<b>106</b>	<b>100.0</b>	<b>27.0</b>

Recovered is based on the number of thefts that were recorded stolen during the reporting period and recovered by the end of the reporting period. 'Estimated value' is based on information supplied by the owner at the time of reporting the theft.

**Table 5.34b South Australia - Thefts and recoveries by estimated value of the vehicle, 2003/2004 - Passenger Vehicles.**

Estimated value	Number of thefts	% of thefts	Number of thefts recovered	% of recoveries	% of thefts recovered in the year
\$500 or less	820	9.4	718	9.4	87.6
\$501-\$1,000	1,449	16.7	1,313	17.2	90.6
\$1,001-\$2,000	1,716	19.7	1,529	20.0	89.1
\$2,001-\$3,000	1,152	13.3	1,020	13.3	88.5
\$3,001-\$4,000	734	8.4	655	8.6	89.2
\$4,001-\$5,000	747	8.6	659	8.6	88.2
<b>Subtotal - \$5,000 or less</b>	<b>6,618</b>	<b>76.1</b>	<b>5,894</b>	<b>77.1</b>	<b>89.1</b>
\$5,001-\$6,000	328	3.8	291	3.8	88.7
\$6,001-\$7,000	200	2.3	174	2.3	87.0
\$7,001-\$8,000	232	2.7	204	2.7	87.9
\$8,001-\$9,000	103	1.2	82	1.1	79.6
\$9,001-\$10,000	254	2.9	213	2.8	83.9
<b>Subtotal - \$5,001-\$10,000</b>	<b>1,117</b>	<b>12.9</b>	<b>964</b>	<b>12.6</b>	<b>86.3</b>
\$10,001-\$15,000	400	4.6	340	4.4	85.0
\$15,001-\$20,000	249	2.9	210	2.7	84.3
<b>Subtotal - \$10,001-\$20,000</b>	<b>649</b>	<b>7.5</b>	<b>550</b>	<b>7.2</b>	<b>84.7</b>
\$20,001-\$25,000	105	1.2	80	1.0	76.2
\$25,001-\$30,000	75	0.9	52	0.7	69.3
<b>Subtotal - \$20,001-\$30,000</b>	<b>180</b>	<b>2.1</b>	<b>132</b>	<b>1.7</b>	<b>73.3</b>
\$30,001-\$40,000	61	0.7	52	0.7	85.2
\$40,001-\$50,000	40	0.5	31	0.4	77.5
\$50,001-\$75,000	20	0.2	16	0.2	80.0
\$75,001+	7	0.1	6	0.1	85.7
<b>Subtotal - \$30,001 or more</b>	<b>128</b>	<b>1.5</b>	<b>105</b>	<b>1.4</b>	<b>82.0</b>
Unknown	0	0.0	0	0.0	0.0
<b>Total</b>	<b>8,692</b>	<b>100.0</b>	<b>7,645</b>	<b>100.0</b>	<b>88.0</b>

Recovered is based on the number of thefts that were recorded stolen during the reporting period and recovered by the end of the reporting period. 'Estimated value' is based on information supplied by the owner at the time of reporting the theft.

**Table 5.34c South Australia - Thefts and recoveries by estimated value of the vehicle, 2003/2004 - Heavy/Other Vehicles.**

Estimated value	Number of thefts	% of thefts	Number of thefts recovered	% of recoveries	% of thefts recovered in the year
\$500 or less	2	1.3	2	1.9	100.0
\$501-\$1,000	5	3.3	3	2.8	60.0
\$1,001-\$2,000	17	11.1	14	13.0	82.4
\$2,001-\$3,000	9	5.9	5	4.6	55.6
\$3,001-\$4,000	5	3.3	2	1.9	40.0
\$4,001-\$5,000	13	8.5	11	10.2	84.6
<b>Subtotal - \$5,000 or less</b>	<b>51</b>	<b>33.3</b>	<b>37</b>	<b>34.3</b>	<b>72.5</b>
\$5,001-\$6,000	5	3.3	4	3.7	80.0
\$6,001-\$7,000	4	2.6	3	2.8	75.0
\$7,001-\$8,000	9	5.9	6	5.6	66.7
\$8,001-\$9,000	1	0.7	1	0.9	100.0
\$9,001-\$10,000	12	7.8	9	8.3	75.0
<b>Subtotal - \$5,001-\$10,000</b>	<b>31</b>	<b>20.3</b>	<b>23</b>	<b>21.3</b>	<b>74.2</b>
\$10,001-\$15,000	12	7.8	8	7.4	66.7
\$15,001-\$20,000	13	8.5	9	8.3	69.2
<b>Subtotal - \$10,001-\$20,000</b>	<b>25</b>	<b>16.3</b>	<b>17</b>	<b>15.7</b>	<b>68.0</b>
\$20,001-\$25,000	10	6.5	7	6.5	70.0
\$25,001-\$30,000	7	4.6	4	3.7	57.1
<b>Subtotal - \$20,001-\$30,000</b>	<b>17</b>	<b>11.1</b>	<b>11</b>	<b>10.2</b>	<b>64.7</b>
\$30,001-\$40,000	9	5.9	7	6.5	77.8
\$40,001-\$50,000	6	3.9	4	3.7	66.7
\$50,001-\$75,000	7	4.6	4	3.7	57.1
\$75,001+	7	4.6	5	4.6	71.4
<b>Subtotal - \$30,001 or more</b>	<b>29</b>	<b>19.0</b>	<b>20</b>	<b>18.5</b>	<b>69.0</b>
Unknown	0	0.0	0	0.0	0.0
<b>Total</b>	<b>153</b>	<b>100.0</b>	<b>108</b>	<b>100.0</b>	<b>70.6</b>

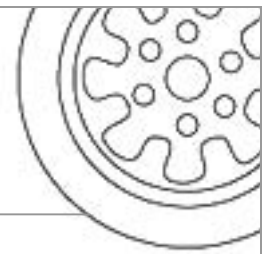
Recovered is based on the number of thefts that were recorded stolen during the reporting period and recovered by the end of the reporting period. 'Estimated value' is based on information supplied by the owner at the time of reporting the theft.

**Table 5.34d South Australia - Thefts and recoveries by estimated value of the vehicle, 2003/2004 - All Vehicles.**

Estimated value	Number of thefts	% of thefts	Number of thefts recovered	% of recoveries	% of thefts recovered in the year
\$500 or less	869	9.4	736	9.4	84.7
\$501-\$1,000	1,508	16.3	1,328	16.9	88.1
\$1,001-\$2,000	1,801	19.5	1,563	19.9	86.8
\$2,001-\$3,000	1,214	13.1	1,035	13.2	85.3
\$3,001-\$4,000	765	8.3	663	8.4	86.7
\$4,001-\$5,000	797	8.6	679	8.6	85.2
<b>Subtotal - \$5,000 or less</b>	<b>6,954</b>	<b>75.2</b>	<b>6,004</b>	<b>76.4</b>	<b>86.3</b>
\$5,001-\$6,000	362	3.9	302	3.8	83.4
\$6,001-\$7,000	220	2.4	184	2.3	83.6
\$7,001-\$8,000	261	2.8	218	2.8	83.5
\$8,001-\$9,000	115	1.2	84	1.1	73.0
\$9,001-\$10,000	280	3.0	226	2.9	80.7
<b>Subtotal - \$5,001-\$10,000</b>	<b>1,238</b>	<b>13.4</b>	<b>1,014</b>	<b>12.9</b>	<b>81.9</b>
\$10,001-\$15,000	426	4.6	351	4.5	82.4
\$15,001-\$20,000	271	2.9	223	2.8	82.3
<b>Subtotal - \$10,001-\$20,000</b>	<b>697</b>	<b>7.5</b>	<b>574</b>	<b>7.3</b>	<b>82.4</b>
\$20,001-\$25,000	115	1.2	87	1.1	75.7
\$25,001-\$30,000	84	0.9	57	0.7	67.9
<b>Subtotal - \$20,001-\$30,000</b>	<b>199</b>	<b>2.2</b>	<b>144</b>	<b>1.8</b>	<b>72.4</b>
\$30,001-\$40,000	70	0.8	59	0.8	84.3
\$40,001-\$50,000	46	0.5	35	0.4	76.1
\$50,001-\$75,000	27	0.3	20	0.3	74.1
\$75,001+	15	0.2	12	0.2	80.0
<b>Subtotal - \$30,001 or more</b>	<b>158</b>	<b>1.7</b>	<b>126</b>	<b>1.6</b>	<b>79.7</b>
Unknown	0	0.0	0	0.0	0.0
<b>Total</b>	<b>9,246</b>	<b>100.0</b>	<b>7,862</b>	<b>100.0</b>	<b>85.0</b>

Recovered is based on the number of thefts that were recorded stolen during the reporting period and recovered by the end of the reporting period. 'Estimated value' is based on information supplied by the owner at the time of reporting the theft.

# highlights



## *Offenders*

This section profiles individuals who have been apprehended by South Australian police during 2003/2004 for either larceny (theft of a motor vehicle for the purpose of profit) or illegal use of a motor vehicle.

- During the last 12 months a total of **1,373 vehicle theft related apprehensions** occurred (down from 1,757 in 2002/2003) resulting in 1,511 counts (charges laid) and involving 1,122 unique offenders. On average, each individual was apprehended 1.22 times during the year for an average of 1.35 counts of illegal use or larceny of a motor vehicle.
- Juveniles (10-17 year olds) accounted for **37.6% of all apprehensions** and 36.5% of alleged offenders, while females were involved in 11.9% of all apprehensions and represented 12.3% of alleged offenders.
- Aboriginals constituted 19.4% of individuals apprehended during 2003/2004 (up from 17.6% in 2001/2002) and were, on average, **3.7 years younger** than other alleged offenders.
- Over two-fifths (43.9%) of the 417 cases finalised in the Magistrate's Court during the 2003 calendar year (and involving larceny or illegal use as the major charge) were **convicted with a penalty**. In another 4.8% of cases the defendant was found guilty without a conviction being recorded, in three cases (0.7%) the defendant was convicted without any penalty.
- Amongst those convicted, **36.6% received suspended imprisonment** as their major penalty, 27.7% received a direct period of imprisonment (average = 30 weeks) and 17.4% were placed on a good behaviour bond.



**Table 5.35 South Australia - Number of apprehensions, unique individuals and counts relating to larceny or illegal use of a motor vehicle during 2003/2004.**

Number of apprehensions for larceny or illegal use of a motor vehicle during 2003/2004:	1,373
Number of unique offenders apprehended for larceny or illegal use of a motor vehicle during 2003/2004:	1,122
Number of counts of larceny or illegal use of a motor vehicle arising from individuals apprehended during 2003/2004:	1,511
Average number of apprehension per individual during 2003/2004:	1.22
Average number of counts of illegal use or larceny per apprehension during 2003/2004:	1.10
Average number of counts of illegal use or larceny per unique individual apprehended during 2003/2004:	1.35

**Table 5.36 South Australia - Age and sex of alleged offenders apprehended during 2003/2004 (based on apprehensions).**

Age at Apprehension	Female		Male		Unknown		Total	
	No.	%	No.	%	No.	%	No.	%
10	0	0.0	4	0.3	0	0.0	4	0.3
11	0	0.0	12	1.0	0	0.0	12	0.9
12	1	0.6	21	1.7	0	0.0	22	1.6
13	4	2.5	43	3.6	0	0.0	47	3.4
14	11	6.7	63	5.2	0	0.0	74	5.4
15	7	4.3	112	9.3	0	0.0	119	8.7
16	15	9.2	115	9.5	0	0.0	130	9.5
17	3	1.8	105	8.7	0	0.0	108	7.9
18	4	2.5	54	4.5	0	0.0	58	4.2
19	12	7.4	61	5.0	0	0.0	73	5.3
20-24	37	22.7	167	13.8	0	0.0	204	14.9
25-29	28	17.2	168	13.9	0	0.0	196	14.3
30-39	29	17.8	228	18.8	0	0.0	257	18.7
40+	12	7.4	57	4.7	0	0.0	69	5.0
Unknown	0	0.0	0	0.0	0	0.0	0	0.0
Average	24.42		22.82		-		23.01	
<b>Total</b>	<b>163</b>	<b>100.0</b>	<b>1,210</b>	<b>100.0</b>	<b>0</b>	<b>0.0</b>	<b>1,373</b>	<b>100.0</b>

**Table 5.37 South Australia - Number of counts of larceny or illegal use of a motor vehicle per apprehension by gender, 2003/2004 (based on apprehensions).**

No. of counts per Apprehension	Female		Male		Unknown		Total	
	No.	%	No.	%	No.	%	No.	%
1	162	99.4	1,152	95.2	0	0.0	1,314	95.7
2	1	0.6	45	3.7	0	0.0	46	3.4
3	0	0.0	8	0.7	0	0.0	8	0.6
4	0	0.0	3	0.2	0	0.0	3	0.2
5	0	0.0	2	0.2	0	0.0	2	0.1
Average	1.01		1.06		-		1.06	
<b>Total</b>	<b>163</b>	<b>100.0</b>	<b>1,210</b>	<b>100.0</b>	<b>0</b>	<b>0.0</b>	<b>1,373</b>	<b>100.0</b>

**Table 5.38 South Australia - Alleged offenders by country of birth and sex during 2003/2004 (based on apprehensions).**

Country	Female		Male		Unknown		Total	
	No.	%	No.	%	No.	%	No.	%
Australia	35	21.5	221	18.3	0	0.0	256	18.6
- Non-Indigenous	116	71.2	890	73.6	0	0.0	1,006	73.3
- Indigenous	84	72.4	655	73.6	0	0.0	739	73.5
- Unknown	32	27.6	234	26.3	0	0.0	266	26.4
Great Britain	0	0.0	1	0.1	0	0.0	1	0.1
France	3	1.8	26	2.1	0	0.0	29	2.1
Germany	1	0.6	0	0.0	0	0.0	1	0.1
India	0	0.0	1	0.1	0	0.0	1	0.1
Indonesia	0	0.0	2	0.2	0	0.0	2	0.1
Iran	0	0.0	1	0.1	0	0.0	1	0.1
Ireland	1	0.6	1	0.1	0	0.0	2	0.1
Italy	0	0.0	3	0.2	0	0.0	3	0.2
South Korea	1	0.6	4	0.3	0	0.0	5	0.4
Lebanon	0	0.0	3	0.2	0	0.0	3	0.2
New Zealand	0	0.0	1	0.1	0	0.0	1	0.1
Philippines	1	0.6	13	1.1	0	0.0	14	1.0
Poland	0	0.0	1	0.1	0	0.0	1	0.1
Singapore	0	0.0	3	0.2	0	0.0	3	0.2
Turkey	0	0.0	1	0.1	0	0.0	1	0.1
Vietnam, North	0	0.0	2	0.2	0	0.0	2	0.1
Vietnam, South	0	0.0	4	0.3	0	0.0	4	0.3
Yugoslavia	0	0.0	4	0.3	0	0.0	4	0.3
Other	4	2.5	29	2.4	0	0.0	33	2.4
<b>Total</b>	<b>163</b>	<b>100.0</b>	<b>1,210</b>	<b>100.0</b>	<b>0</b>	<b>0.0</b>	<b>1,373</b>	<b>100.0</b>

**Table 5.39 South Australia - Age by ethnic appearance of alleged offenders 2003/2004 (based on apprehensions).**

Age at Apprehension	Non-Indigenous		Indigenous		Unknown		Total	
	No.	%	No.	%	No.	%	No.	%
10	3	0.3	0	0.0	1	10.0	4	0.3
11	9	0.8	2	0.8	1	10.0	12	0.9
12	10	0.9	11	4.1	1	10.0	22	1.6
13	27	2.5	19	7.1	1	10.0	47	3.4
14	47	4.3	26	9.8	1	10.0	74	5.4
15	84	7.7	35	13.2	0	0.0	119	8.7
16	94	8.6	35	13.2	1	10.0	130	9.5
17	82	7.5	25	9.4	1	10.0	108	7.9
18	44	4.0	13	4.9	1	10.0	58	4.2
19	62	5.7	11	4.1	0	0.0	73	5.3
20-24	170	15.5	34	12.8	0	0.0	204	14.9
25-29	169	15.4	26	9.8	1	10.0	196	14.3
30-39	230	21.0	27	10.2	0	0.0	257	18.7
40+	66	6.0	2	0.8	1	10.0	69	5.0
Unknown	0	0.0	0	0.0	0	0.0	0	0.0
Average age (years)	24.0		19.3		18.5		23.0	
<b>Total</b>	<b>1,097</b>	<b>100.0</b>	<b>266</b>	<b>100.0</b>	<b>10</b>	<b>100.0</b>	<b>1,373</b>	<b>100.0</b>

**Table 5.40 South Australia - Number of counts of larceny or illegal use of a motor vehicle per apprehension by ethnic appearance, 2003/2004 (based on apprehensions).**

No. of counts per Apprehension	Non-Indigenous		Indigenous		Unknown		Total	
	No.	%	No.	%	No.	%	No.	%
1	1,055	96.2	249	93.6	10	100.0	1,314	95.7
2	33	3.0	13	4.9	0	0.0	46	3.4
3	5	0.5	3	1.1	0	0.0	8	0.6
4	2	0.2	1	0.4	0	0.0	3	0.2
5	2	0.2	0	0.0	0	0.0	2	0.1
Average	1.05		1.08		1.00		1.06	
<b>Total</b>	<b>1,097</b>	<b>100.0</b>	<b>266</b>	<b>100.0</b>	<b>10</b>	<b>100.0</b>	<b>1,373</b>	<b>100.0</b>

**Table 5.41 South Australia - Number of prior convictions for any offence at the time of apprehension by sex, 2003/2004.**

No. of prior convictions	Female No.	Female %	Male No.	Male %	Unknown No.	Unknown %	Total No.	Total %
None	70	42.9	421	34.8	0	0.0	491	35.8
1	6	3.7	33	2.7	0	0.0	39	2.8
2 - 5	16	9.8	107	8.8	0	0.0	123	9.0
6 - 10	20	12.3	82	6.8	0	0.0	102	7.4
11 - 25	18	11.0	192	15.9	0	0.0	210	15.3
26 - 50	23	14.1	184	15.2	0	0.0	207	15.1
51 - 100	8	4.9	150	12.4	0	0.0	158	11.5
101+	2	1.2	41	3.4	0	0.0	43	3.1
Unknown	0	0.0	0	0.0	0	0.0	0	0.0
Average	13.46		22.07		-		21.05	
<b>Total</b>	<b>163</b>	<b>100.0</b>	<b>1,210</b>	<b>100.0</b>	<b>0</b>	<b>0.0</b>	<b>1,373</b>	<b>100.0</b>

**Table 5.42 South Australia - Prior convictions for any offence by age at time of apprehension, 2003/2004.**

Age (years)	Number of prior convictions for any offence									Total	Mean
	0	1	2 - 5	6 - 10	11 - 25	26 - 50	51 - 100	101+			
10	4	0	0	0	0	0	0	0	0	4	0.00
11	11	0	1	0	0	0	0	0	0	12	0.33
12	21	0	1	0	0	0	0	0	0	22	0.09
13	38	0	3	2	4	0	0	0	0	47	1.62
14	60	1	4	2	7	0	0	0	0	74	2.00
15	82	4	6	6	14	7	0	0	0	119	4.76
16	92	2	6	8	14	8	0	0	0	130	4.41
17	60	6	11	8	17	6	0	0	0	108	5.57
18	23	4	7	7	11	3	3	0	0	58	9.50
19	28	4	12	5	10	12	2	0	0	73	10.74
20-24	31	7	29	24	48	34	30	1	0	204	21.40
25-29	20	3	22	10	32	58	44	7	0	196	34.90
30-39	14	7	17	28	39	63	59	30	0	257	44.91
40+	7	1	4	2	14	16	20	5	0	69	41.14
Unknown	0	0	0	0	0	0	0	0	0	0	-
<b>Total</b>	<b>491</b>	<b>39</b>	<b>123</b>	<b>102</b>	<b>210</b>	<b>207</b>	<b>158</b>	<b>43</b>	<b>0</b>	<b>1,373</b>	<b>21.05</b>

**Table 5.43 South Australia - Prior convictions for any offence by age at time of apprehension, 2003/2004.**

Age (years)	Number of prior convictions for any offence								Total	Mean
	0	1	2 - 5	6 - 10	11 - 25	26 - 50	51 - 100	101+		
10	100.0	0.0	0.0	0.0	0.0	0.0	0.0	0.0	100.0	0.00
11	91.7	0.0	8.3	0.0	0.0	0.0	0.0	0.0	100.0	0.33
12	95.5	0.0	4.5	0.0	0.0	0.0	0.0	0.0	100.0	0.09
13	80.9	0.0	6.4	4.3	8.5	0.0	0.0	0.0	100.0	1.62
14	81.1	1.4	5.4	2.7	9.5	0.0	0.0	0.0	100.0	2.00
15	68.9	3.4	5.0	5.0	11.8	5.9	0.0	0.0	100.0	4.76
16	70.8	1.5	4.6	6.2	10.8	6.2	0.0	0.0	100.0	4.41
17	55.6	5.6	10.2	7.4	15.7	5.6	0.0	0.0	100.0	5.57
18	39.7	6.9	12.1	12.1	19.0	5.2	5.2	0.0	100.0	9.50
19	38.4	5.5	16.4	6.8	13.7	16.4	2.7	0.0	100.0	10.74
20-24	15.2	3.4	14.2	11.8	23.5	16.7	14.7	0.5	100.0	21.40
25-29	10.2	1.5	11.2	5.1	16.3	29.6	22.4	3.6	100.0	34.90
30-39	5.4	2.7	6.6	10.9	15.2	24.5	23.0	11.7	100.0	44.91
40+	10.1	1.4	5.8	2.9	20.3	23.2	29.0	7.2	100.0	41.14
Unknown	0.0	0.0	0.0	0.0	0.0	0.0	0.0	0.0	0.0	-
<b>Total</b>	<b>35.8</b>	<b>2.8</b>	<b>9.0</b>	<b>7.4</b>	<b>15.3</b>	<b>15.1</b>	<b>11.5</b>	<b>3.1</b>	<b>100.0</b>	<b>21.05</b>

**Table 5.44 South Australia - Prior detention or imprisonment for any offence by age at time of apprehension, 2003/2004.**

Age (years)	No previous detention or imprisonment		Previous detenti only		Previous imprisonment or		Previous detenti and imprisonme		Total	
	No.	%	No.	%	No.	%	No.	%	No.	%
10	4	0.4	0	0.0	0	0.0	0	0.0	4	0.3
11	12	1.3	0	0.0	0	0.0	0	0.0	12	0.9
12	22	2.4	0	0.0	0	0.0	0	0.0	22	1.6
13	47	5.1	0	0.0	0	0.0	0	0.0	47	3.4
14	73	7.9	1	1.7	0	0.0	0	0.0	74	5.4
15	104	11.2	15	25.0	0	0.0	0	0.0	119	8.7
16	116	12.5	14	23.3	0	0.0	0	0.0	130	9.5
17	97	10.5	9	15.0	0	0.0	2	3.4	108	7.9
18	49	5.3	5	8.3	1	0.3	3	5.2	58	4.2
19	60	6.5	5	8.3	3	0.9	5	8.6	73	5.3
20-24	138	14.9	11	18.3	29	8.8	26	44.8	204	14.9
25-29	82	8.8	0	0.0	106	32.3	8	13.8	196	14.3
30-39	101	10.9	0	0.0	146	44.5	10	17.2	257	18.7
40+	22	2.4	0	0.0	43	13.1	4	6.9	69	5.0
Unknown	0	0.0	0	0.0	0	0.0	0	0.0	0	0.0
<b>Total</b>	<b>927</b>	<b>100.0</b>	<b>60</b>	<b>100.0</b>	<b>328</b>	<b>100.0</b>	<b>58</b>	<b>100.0</b>	<b>1,373</b>	<b>100.0</b>

**Table 5.45 South Australia - Time since last conviction for any offence and current apprehension for larceny or illegal use of a motor vehicle by age at time of apprehension, 2003/2004.**

Age (years)	No prev. conv.	up to 30 days	31-90 days	91-180 days	181-365 days	1 - <2 years	2 - <3 years	3 or more years	Total	Mean (days)
10	4	0	0	0	0	0	0	0	4	-
11	11	1	0	0	0	0	0	0	12	13.0
12	21	0	0	1	0	0	0	0	22	102.0
13	38	0	4	2	0	3	0	0	47	230.4
14	60	0	8	1	2	2	0	1	74	247.9
15	82	3	13	11	5	4	1	0	119	162.8
16	92	3	9	8	11	4	2	1	130	247.0
17	60	3	6	16	16	6	1	0	108	227.6
18	23	4	6	8	5	8	2	2	58	322.6
19	28	3	5	10	16	8	3	0	73	277.9
20-24	31	15	19	23	51	47	11	7	204	356.4
25-29	20	6	23	23	49	36	11	28	196	578.1
30-39	14	16	35	39	55	43	21	34	257	654.1
40+	7	3	8	11	11	11	4	14	69	755.8
Unknown	0	0	0	0	0	0	0	0	0	-
<b>Total</b>	<b>491</b>	<b>57</b>	<b>136</b>	<b>153</b>	<b>221</b>	<b>172</b>	<b>56</b>	<b>87</b>	<b>1,373</b>	<b>481.9</b>

The mean number of days is based only on those apprehensions involving defendants with a prior conviction.

**Table 5.46 South Australia - Number of prior convictions for larceny/illegal use of a motor vehicle, at the time of apprehension by sex, 2003/2004.**

No. of prior	Female		Male		Unknown		Total	
	No.	%	No.	%	No.	%	No.	%
MVT convictions								
None	138	84.7	780	64.5	0	0.0	918	66.9
1	12	7.4	129	10.7	0	0.0	141	10.3
2-5	12	7.4	202	16.7	0	0.0	214	15.6
6-10	1	0.6	58	4.8	0	0.0	59	4.3
11-25	0	0.0	38	3.1	0	0.0	38	2.8
26-50	0	0.0	2	0.2	0	0.0	2	0.1
51+	0	0.0	1	0.1	0	0.0	1	0.1
Average	0.26		1.16		-		1.05	
<b>Total</b>	<b>163</b>	<b>100.0</b>	<b>1,210</b>	<b>100.0</b>	<b>0</b>	<b>0.0</b>	<b>1,373</b>	<b>100.0</b>

Note: This table refers to prior motor vehicle theft convictions, whereas Table 5.39 refers to prior convictions for any offence.

**Table 5.47 South Australia - Number of prior convictions for larceny/illegal use of a motor vehicle by age at the time of apprehension, 2003/2004 (number).**

Age (years)	Number of prior convictions for larceny or illegal use of a motor vehicle							Total	Mean
	0	1	2-5	6-10	11-25	26-50	51+		
10	4	0	0	0	0	0	0	4	0.00
11	12	0	0	0	0	0	0	12	0.00
12	22	0	0	0	0	0	0	22	0.00
13	40	2	5	0	0	0	0	47	0.26
14	65	3	6	0	0	0	0	74	0.20
15	95	6	12	4	2	0	0	119	0.64
16	101	13	14	1	1	0	0	130	0.45
17	83	4	16	5	0	0	0	108	0.61
18	44	4	9	0	1	0	0	58	0.57
19	53	5	8	5	2	0	0	73	1.00
20-24	124	41	24	9	6	0	0	204	1.02
25-29	98	27	46	15	10	0	0	196	1.63
30-39	139	30	54	15	16	2	1	257	1.97
40+	38	6	20	5	0	0	0	69	1.10
Unknown	0	0	0	0	0	0	0	0	-
<b>Total</b>	<b>918</b>	<b>141</b>	<b>214</b>	<b>59</b>	<b>38</b>	<b>2</b>	<b>1</b>	<b>1,373</b>	<b>1.05</b>

**Table 5.48 South Australia - Per cent of prior convictions for larceny/illegal use of a motor vehicle by age at the time of apprehension, 2003/2004 (per cent).**

Age (years)	Number of prior convictions for larceny or illegal use of a motor vehicle (% of age group)							Total	Mean
	0	1	2-5	6-10	11-25	26-50	51+		
10	100.0	0.0	0.0	0.0	0.0	0.0	0.0	100.0	0.00
11	100.0	0.0	0.0	0.0	0.0	0.0	0.0	100.0	0.00
12	100.0	0.0	0.0	0.0	0.0	0.0	0.0	100.0	0.00
13	85.1	4.3	10.6	0.0	0.0	0.0	0.0	100.0	0.26
14	87.8	4.1	8.1	0.0	0.0	0.0	0.0	100.0	0.20
15	79.8	5.0	10.1	3.4	1.7	0.0	0.0	100.0	0.64
16	77.7	10.0	10.8	0.8	0.8	0.0	0.0	100.0	0.45
17	76.9	3.7	14.8	4.6	0.0	0.0	0.0	100.0	0.61
18	75.9	6.9	15.5	0.0	1.7	0.0	0.0	100.0	0.57
19	72.6	6.8	11.0	6.8	2.7	0.0	0.0	100.0	1.00
20-24	60.8	20.1	11.8	4.4	2.9	0.0	0.0	100.0	1.02
25-29	50.0	13.8	23.5	7.7	5.1	0.0	0.0	100.0	1.63
30-39	54.1	11.7	21.0	5.8	6.2	0.8	0.4	100.0	1.97
40+	55.1	8.7	29.0	7.2	0.0	0.0	0.0	100.0	1.10
Unknown	0.0	0.0	0.0	0.0	0.0	0.0	0.0	0.0	-
<b>Total</b>	<b>66.9</b>	<b>10.3</b>	<b>15.6</b>	<b>4.3</b>	<b>2.8</b>	<b>0.1</b>	<b>0.1</b>	<b>100.0</b>	<b>1.05</b>

**Table 5.49 South Australia - Prior detention or imprisonment for larceny/illegal use of a motor vehicle by age, 2003/2004.**

Age (years)	No previous detention or imprisonment		Previous detention only		Previous imprisonment only		Previous detention and imprisonment		Total	
	No.	%	No.	%	No.	%	No.	%	No.	%
10	4	0.4	0	0.0	0	0.0	0	0.0	4	0.3
11	12	1.1	0	0.0	0	0.0	0	0.0	12	0.9
12	22	1.9	0	0.0	0	0.0	0	0.0	22	1.6
13	47	4.2	0	0.0	0	0.0	0	0.0	47	3.4
14	74	6.5	0	0.0	0	0.0	0	0.0	74	5.4
15	108	9.5	11	26.8	0	0.0	0	0.0	119	8.7
16	122	10.8	8	19.5	0	0.0	0	0.0	130	9.5
17	102	9.0	6	14.6	0	0.0	0	0.0	108	7.9
18	54	4.8	4	9.8	0	0.0	0	0.0	58	4.2
19	64	5.7	5	12.2	1	0.6	3	15.0	73	5.3
20-24	170	15.0	6	14.6	16	8.8	12	60.0	204	14.9
25-29	131	11.6	0	0.0	62	34.3	3	15.0	196	14.3
30-39	173	15.3	1	2.4	81	44.8	2	10.0	257	18.7
40+	48	4.2	0	0.0	21	11.6	0	0.0	69	5.0
Unknown	0	0.0	0	0.0	0	0.0	0	0.0	0	0.0
<b>Total</b>	<b>1,131</b>	<b>100.0</b>	<b>41</b>	<b>100.0</b>	<b>181</b>	<b>100.0</b>	<b>20</b>	<b>100.0</b>	<b>1,373</b>	<b>100.0</b>

**Table 5.50 South Australia - Time since last conviction for larceny/illegal use of a motor vehicle and current apprehension for larceny or illegal use of a motor vehicle by age at time of apprehension, 2003/2004.**

Age (years)	No pri conv	up to day:	31-9 day:	91-18 day:	181-3 day:	1 - < year	2 - < year	3 or m year	Tota	Mean (days)
10	4	0	0	0	0	0	0	0	4	-
11	12	0	0	0	0	0	0	0	12	-
12	22	0	0	0	0	0	0	0	22	-
13	47	0	0	0	0	0	0	0	47	-
14	73	0	1	0	0	0	0	0	74	34.0
15	117	0	2	0	0	0	0	0	119	72.0
16	129	0	0	0	0	1	0	0	130	715.0
17	107	0	0	0	1	0	0	0	108	183.0
18	58	0	0	0	0	0	0	0	58	-
19	73	0	0	0	0	0	0	0	73	-
20-24	202	1	0	0	0	0	1	0	204	529.5
25-29	192	1	0	0	2	1	0	0	196	304.8
30-39	248	0	0	0	0	4	2	3	257	1,164.7
40+	66	0	0	0	0	3	0	0	69	497.7
Unknown	0	0	0	0	0	0	0	0	0	-
<b>Total</b>	<b>1,350</b>	<b>2</b>	<b>3</b>	<b>0</b>	<b>3</b>	<b>9</b>	<b>3</b>	<b>3</b>	<b>1,373</b>	<b>666.5</b>

The mean number of days is based only on those apprehensions involving defendants with a prior conviction.



**Table 5.51 South Australia - Age and sex of alleged offenders apprehended during 2003/2004 (based on individuals).**

Age (years)	Female		Male		Unknown		Total	
	No.	%	No.	%	No.	%	No.	%
10	0	0.0	3	0.3	0	0.0	3	0.3
11	0	0.0	10	1.0	0	0.0	10	0.9
12	1	0.7	17	1.7	0	0.0	18	1.6
13	4	2.9	30	3.0	0	0.0	34	3.0
14	9	6.5	45	4.6	0	0.0	54	4.8
15	7	5.1	83	8.4	0	0.0	90	8.0
16	12	8.7	97	9.9	0	0.0	109	9.7
17	2	1.4	89	9.0	0	0.0	91	8.1
18	4	2.9	48	4.9	0	0.0	52	4.6
19	11	8.0	49	5.0	0	0.0	60	5.3
20-24	27	19.6	139	14.1	0	0.0	166	14.8
25-29	27	19.6	137	13.9	0	0.0	164	14.6
30-39	26	18.8	189	19.2	0	0.0	215	19.2
40+	8	5.8	48	4.9	0	0.0	56	5.0
Unknown	0	0.0	0	0.0	0	0.0	0	0.0
Average	24.17		22.99		-		23.13	
<b>Total</b>	<b>138</b>	<b>100.0</b>	<b>984</b>	<b>100.0</b>	<b>0</b>	<b>0.0</b>	<b>1,122</b>	<b>100.0</b>

Age at time of first apprehension during 2003/2004.

**Table 5.52 South Australia - Total number of counts of larceny or illegal use of a motor vehicle per individual by gender, 2003/2004.**

No. of counts per individual	Female		Male		Unknown		Total	
	No.	%	No.	%	No.	%	No.	%
1	120	87.0	783	79.6	0	0.0	903	80.5
2	13	9.4	134	13.6	0	0.0	147	13.1
3	2	1.4	45	4.6	0	0.0	47	4.2
4	3	2.2	15	1.5	0	0.0	18	1.6
5	0	0.0	4	0.4	0	0.0	4	0.4
7	0	0.0	2	0.2	0	0.0	2	0.2
8	0	0.0	1	0.1	0	0.0	1	0.1
Average	1.19		1.31		-		1.29	
<b>Total</b>	<b>138</b>	<b>100.0</b>	<b>984</b>	<b>100.0</b>	<b>0</b>	<b>0.0</b>	<b>1,122</b>	<b>100.0</b>

Counts determined at time of apprehension.

**Table 5.53 South Australia - Number of apprehensions for larceny or illegal use of a motor vehicle per individual by gender, 2003/2004.**

No. of apprehensions per individual	Female		Male		Unknown		Total	
	No.	%	No.	%	No.	%	No.	%
1	121	87.7	814	82.7	0	0.0	935	83.3
2	12	8.7	128	13.0	0	0.0	140	12.5
3	2	1.4	30	3.0	0	0.0	32	2.9
4	3	2.2	10	1.0	0	0.0	13	1.2
5	0	0.0	2	0.2	0	0.0	2	0.2
Average	1.18		1.23		-		1.22	
<b>Total</b>	<b>138</b>	<b>100.0</b>	<b>984</b>	<b>100.0</b>	<b>0</b>	<b>0.0</b>	<b>1,122</b>	<b>100.0</b>

**Table 5.54 South Australia - Age by ethnic appearance of alleged offenders, 2003/2004 (based on unique individuals).**

Age (years)	Non-Indigenous		Indigenous		Unknown		Total	
	No.	%	No.	%	No.	%	No.	%
10	2	0.2	0	0.0	1	10.0	3	0.3
11	7	0.8	2	1.0	1	10.0	10	0.9
12	9	1.0	8	3.9	1	10.0	18	1.6
13	19	2.1	14	6.8	1	10.0	34	3.0
14	37	4.1	16	7.8	1	10.0	54	4.8
15	68	7.5	22	10.7	0	0.0	90	8.0
16	82	9.0	26	12.7	1	10.0	109	9.7
17	72	7.9	18	8.8	1	10.0	91	8.1
18	39	4.3	12	5.9	1	10.0	52	4.6
19	53	5.8	7	3.4	0	0.0	60	5.3
20-24	138	15.2	28	13.7	0	0.0	166	14.8
25-29	140	15.4	23	11.2	1	10.0	164	14.6
30-39	188	20.7	27	13.2	0	0.0	215	19.2
40+	53	5.8	2	1.0	1	10.0	56	5.0
Unknown	0	0.0	0	0.0	0	0.0	0	0.0
<b>Total</b>	<b>907</b>	<b>100.0</b>	<b>205</b>	<b>100.0</b>	<b>10</b>	<b>100.0</b>	<b>1,122</b>	<b>100.0</b>

Age based on first apprehension during 2003/2004.

**Table 5.55 South Australia - Total number of counts of larceny or illegal use of a motor vehicle per individual by ethnic appearance, 2003/2004.**

No. of counts per individual	Non-Indigenous		Indigenous		Unknown		Total	
	No.	%	No.	%	No.	%	No.	%
1	737	81.3	156	76.1	10	100.0	903	80.5
2	118	13.0	29	14.1	0	0.0	147	13.1
3	34	3.7	13	6.3	0	0.0	47	4.2
4	14	1.5	4	2.0	0	0.0	18	1.6
5	3	0.3	1	0.5	0	0.0	4	0.4
7	0	0.0	2	1.0	0	0.0	2	0.2
8	1	0.1	0	0.0	0	0.0	1	0.1
Average	1.27		1.40		1.00		1.29	
<b>Total</b>	<b>907</b>	<b>100.0</b>	<b>205</b>	<b>100.0</b>	<b>10</b>	<b>100.0</b>	<b>1,122</b>	<b>100.0</b>

Counts determined at time of apprehension.

**Table 5.56 South Australia - Number of apprehensions for larceny or illegal use of a motor vehicle per individual by ethnic appearance, 2003/2004.**

No. of apprehensions per individual	Non-Indigenous		Indigenous		Unknown		Total	
	No.	%	No.	%	No.	%	No.	%
1	766	84.5	159	77.6	10	100.0	935	83.3
2	104	11.5	36	17.6	0	0.0	140	12.5
3	26	2.9	6	2.9	0	0.0	32	2.9
4	10	1.1	3	1.5	0	0.0	13	1.2
5	1	0.1	1	0.5	0	0.0	2	0.2
Average	1.21		1.30		1.00		1.22	
<b>Total</b>	<b>907</b>	<b>100.0</b>	<b>205</b>	<b>100.0</b>	<b>10</b>	<b>100.0</b>	<b>1,122</b>	<b>100.0</b>

**Table 5.57 South Australia - Magistrates Court - Outcome of cases involving larceny/illegal use of a motor vehicle as the major charge, 2003.**

Major charge	Committed for trial or sentence	Convicted with penalty	Convicted without penalty	Guilty without conviction	Acquitted on major charge	Not guilty: Mentally incomp.	Major charge withdr.	Major charge dismissed	Other (eg. death)	Total
Larceny of a MV	0	15	0	3	0	0	11	20	0	49
Illegal use of a MV	0	168	3	17	0	1	127	52	0	368
Per cent	0.0	43.9	0.7	4.8	0.0	0.2	33.1	17.3	0.0	100.0
<b>Total</b>	<b>0</b>	<b>183</b>	<b>3</b>	<b>20</b>	<b>0</b>	<b>1</b>	<b>138</b>	<b>72</b>	<b>0</b>	<b>417</b>

**Table 5.58 South Australia - Magistrates Court - Major penalty for cases where the major charge convicted was larceny/illegal use of a motor vehicle, 2003.**

Major charge	No penalty	Order	Rising of the court	Fine (\$)				Susp. of license	Community service order
				No.	Min.	Average	Max.		
Larceny of a MV	0	0	0	3	200	200	200	0	1
Illegal use of a MV	3	0	0	1	50	50	50	20	15
<b>Total</b>	<b>3</b>	<b>0</b>	<b>0</b>	<b>4</b>	<b>50</b>	<b>163</b>	<b>200</b>	<b>20</b>	<b>16</b>
Per cent	1.3	0.0	0.0	1.7				8.5	6.8

Major charge	Bond	Susp. Imprison.	Imprisonment (weeks)				Total	
			No.	Min.	Average	Max.	No.	Per cent
Larceny of a MV	3	8	4	6	54	130	19	8.1
Illegal use of a MV	38	78	61	4	28	86	216	91.9
<b>Total</b>	<b>41</b>	<b>86</b>	<b>65</b>	<b>4</b>	<b>30</b>	<b>130</b>	<b>235</b>	<b>100.0</b>
Per cent	17.4	36.6	27.7				100.0	

**Table 5.59 South Australia - Supreme Court - Outcomes of cases involving larceny/illegal use of a motor vehicle as the major charge, 2003.**

Major charge	Trial							Other outcome
	Pleads guilty	Guilty as charged	Guilty of lesser off.	Guilty of other off.	Not guilty: mental incomp.	Acquitted		
Larceny of a MV	0	0	0	0	0	0	0	0
Illegal use of a MV	0	0	0	0	0	0	0	0
<b>Total</b>	<b>0</b>	<b>0</b>	<b>0</b>	<b>0</b>	<b>0</b>	<b>0</b>	<b>0</b>	<b>0</b>
Per cent	0.0	0.0	0.0	0.0	0.0	0.0	0.0	0.0

Major charge	Guilty plea		Major charge dropped			Total charged	
	Guilty as charged	Guilty of other offence	Guilty of other offence	No other charge guilty	No.	Per cent	
Larceny of a MV	0	0	0	0	0	0	0
Illegal use of a MV	3	0	0	1	4	100.0	
<b>Total</b>	<b>3</b>	<b>0</b>	<b>0</b>	<b>1</b>	<b>4</b>	<b>100.0</b>	
Per cent	75.0	0.0	0.0	25.0	100		

**Table 5.60 South Australia - Supreme and District Court - Major penalty of cases involving larceny/illegal use of a motor vehicle as the major charge, 2003.**

Major Charge	Other penalty	Fine	Susp. of drivers licence	Rising of the court	Bond	Suspended Imprisonment
Larceny of a MV	0	0	0	0	0	0
Illegal use of a MV	2	0	1	0	1	0
<b>Total</b>	<b>2</b>	<b>0</b>	<b>1</b>	<b>0</b>	<b>1</b>	<b>0</b>
Per cent	40.0	0.0	20.0	0.0	20.0	0.0

Major Charge	Immediate imprisonment: duration of sentence for major charge					Total
	No.	Av. N.P.P (mths)	Av. sentence (mths)	Less than 6 months	6 months or greater	
Larceny of a MV	0	-	-	0	0	0
Illegal use of a MV	1	13.5	4.0	1	0	5
<b>Total</b>	<b>1</b>	<b>13.5</b>	<b>4.0</b>	<b>1</b>	<b>0</b>	<b>5</b>
Per cent	20.0			20.0	0.0	100.0

**Table 5.61 Juvenile Offenders - Actions by Police: number of actions by major offence charged and sex, 2003.**

Offence	Number of actions	% of actions
Larceny/illegal use of a vehicle - male	423	87.2
Larceny/illegal use of a vehicle - female	62	12.8
<b>Total</b>	<b>485</b>	<b>100.0</b>

Above table also relates to non-motorised vehicles. A person is classed as a juvenile if they are less than 18 years of age.

**Table 5.62 Juvenile Offenders - Actions by Police: age and sex of offender by major offence alleged, 2003.**

Larceny/illegal use of a vehicle	Females		Males		Total	
	No.	%	No.	%	No.	%
Age (years)						
10	0	0.0	5	1.2	5	1.0
11	3	4.8	9	2.1	12	2.5
12	2	3.2	20	4.7	22	4.5
13	4	6.5	38	9.0	42	8.7
14	18	29.0	66	15.6	84	17.3
15	11	17.7	100	23.6	111	22.9
16	15	24.2	98	23.2	113	23.3
17	8	12.9	80	18.9	88	18.1
18+	1	1.6	7	1.7	8	1.6
Unknown	0	0.0	0	0.0	0	0.0
<b>Total</b>	<b>62</b>	<b>100.0</b>	<b>423</b>	<b>100.0</b>	<b>485</b>	<b>100.0</b>

Above table also relates to non-motorised vehicles. A person is classed as a juvenile if they are less than 18 years of age.

**Table 5.63 Juvenile Offenders - Actions by Police: race and major offence alleged, 2003.**

Offence	Aboriginal	Non-Aboriginal	Unknown	Total
Larceny/illegal use of a vehicle	117	361	7	485
<b>Per cent</b>	<b>24.1</b>	<b>74.4</b>	<b>1.4</b>	<b>100.0</b>

The classification 'Aboriginal' has been assigned by police, not by individuals themselves. Above table also relates to non-motorised vehicles. A person is classed as a juvenile if they are less than 18 years of age.

**Table 5.64 Juvenile Offenders - Actions by Police: type of action by major offence alleged, 2003.**

Offence	Total						Percentage
	Formal Caution	Transfer to Family Conference	Transfer to Youth Court	Withdrawn	Unknown	Total	
Larceny of a motor vehicle	1	7	9	0	2	19	3.9
Illegal use of a motor vehicle	50	78	256	6	10	400	82.5
Larceny/illegal use of other vehicle	5	17	41	0	3	66	13.6
<b>Total</b>	<b>56</b>	<b>102</b>	<b>306</b>	<b>6</b>	<b>15</b>	<b>485</b>	<b>100.0</b>
<b>Per cent</b>	<b>11.5</b>	<b>21.0</b>	<b>63.1</b>	<b>1.2</b>	<b>3.1</b>	<b>100.0</b>	

A person is classed as a juvenile if they are less than 18 years of age.

**Table 5.65 Juvenile Offenders - Actions by Police: race and type of action by major offence alleged, 2003.**

Offence	Aboriginal					Total
	Formal Caution	Transfer to Family Conference	Transfer to Youth Court	Withdrawn	Unknown	
Larceny/illegal use of a vehicle	7	15	92	1	2	117
<b>Per cent</b>	<b>6.0</b>	<b>12.8</b>	<b>78.6</b>	<b>0.9</b>	<b>1.7</b>	<b>100.0</b>

Offence	Non-Aboriginal					Total
	Formal Caution	Transfer to Family Conference	Transfer to Youth Court	Withdrawn	Unknown	
Larceny/illegal use of a vehicle	43	87	213	5	13	361
<b>Per cent</b>	<b>11.9</b>	<b>24.0</b>	<b>59.0</b>	<b>1.4</b>	<b>3.6</b>	<b>100.0</b>

Above table also relates to non-motorised vehicles. In addition there were 7 major charges of 'illegal use of a motor vehicle' where ethnicity was unknown. The classification 'Aboriginal' has been assigned by police, not by individuals themselves. A person is classed as a juvenile if they are less than 18 years of age..

**Table 5.66 Juvenile Offenders - Youth Court: cases finalised by major offence charged and sex, 2003.**

Offence	Number of cases	% of cases
Larceny/illegal use of a vehicle - male	186	85.7
Larceny/illegal use of a vehicle - female	31	14.3
<b>Total</b>	<b>217</b>	<b>100.0</b>

Above table also relates to non-motorised vehicles. A person is classed as a juvenile if they are less than 18 years of age.

**Table 5.67 Juvenile Offenders - Youth Court: appearances where major offence proved by major penalty imposed for major charge, 2003.**

Offence	Larceny/illegal use of a vehicle	
	Number	%
Detention	22	12.9
Detention suspended	32	18.8
Community Service Order	21	12.4
Obligation	65	38.2
Licence disqualification	26	15.3
Fine	0	0.0
Compensation	0	0.0
Other order	0	0.0
Dismissed without penalty	4	2.4
<b>Total</b>	<b>170</b>	<b>100.0</b>

Major offence charged	Larceny/illegal use of a vehicle				
	Number	%	Minimum	Average	Maximum
Fine (\$)	0	0.0	-	-	-
Community Service Order (Hours)	21	12.4	10	70	160
Compensation (\$)	0	0.0	-	-	-

Above table also relates to non-motorised vehicles. A person is classed as a juvenile if they are less than 18 years of age.

**Table 5.68 Juvenile Offenders - Family conferences by major offence alleged and sex, 2003.**

Offence	Number of cases	% of cases
Larceny/illegal use of a vehicle - male	97	82.9
Larceny/illegal use of a vehicle - female	20	17.1
<b>Total</b>	<b>117</b>	<b>100.0</b>

Above table also relates to non-motorised vehicles. A person is classed as a juvenile if they are less than 18 years of age.

**Table 5.69 Juvenile Offenders - Family Conferences: age and sex of defendant by major offence alleged, 2003.**

Larceny/illegal use of a vehicle	Females		Males		Total	
	Age (years)	No.	%	No.	%	No.
10	0	0.0	2	2.1	2	1.7
11	2	10.0	1	1.0	3	2.6
12	2	10.0	1	1.0	3	2.6
13	2	10.0	9	9.3	11	9.4
14	3	15.0	20	20.6	23	19.7
15	3	15.0	23	23.7	26	22.2
16	3	15.0	23	23.7	26	22.2
17	5	25.0	18	18.6	23	19.7
18+	-	-	-	-	-	-
Unknown	-	-	-	-	-	-
<b>Total</b>	<b>20</b>	<b>100.0</b>	<b>97</b>	<b>100.0</b>	<b>117</b>	<b>100.0</b>

Above table also relates to non-motorised vehicles. A person is classed as a juvenile if they are less than 18 years of age.

**Table 5.70 Juvenile Offenders - Family Conferences: age by race of defendant, 2003 (larceny and illegal use of a motor vehicle combined).**

Age (years)	Race			Total	%
	Aboriginal	Non-Aboriginal	Unknown		
10	1	1	0	2	1.7
11	2	1	0	3	2.6
12	1	2	0	3	2.6
13	0	11	0	11	9.4
14	2	21	0	23	19.7
15	3	23	0	26	22.2
16	3	23	0	26	22.2
17	3	20	0	22	19.7
18+	0	0	0	0	0.0
Unknown	0	0	0	0	0.0
<b>Total</b>	<b>15</b>	<b>102</b>	<b>0</b>	<b>117</b>	<b>100.0</b>
<b>Percentage</b>	<b>12.8</b>	<b>87.2</b>	<b>0.0</b>		<b>0.0</b>

Above table also relates to non-motorised vehicles. A person is classed as a juvenile if they are less than 18 years of age.